

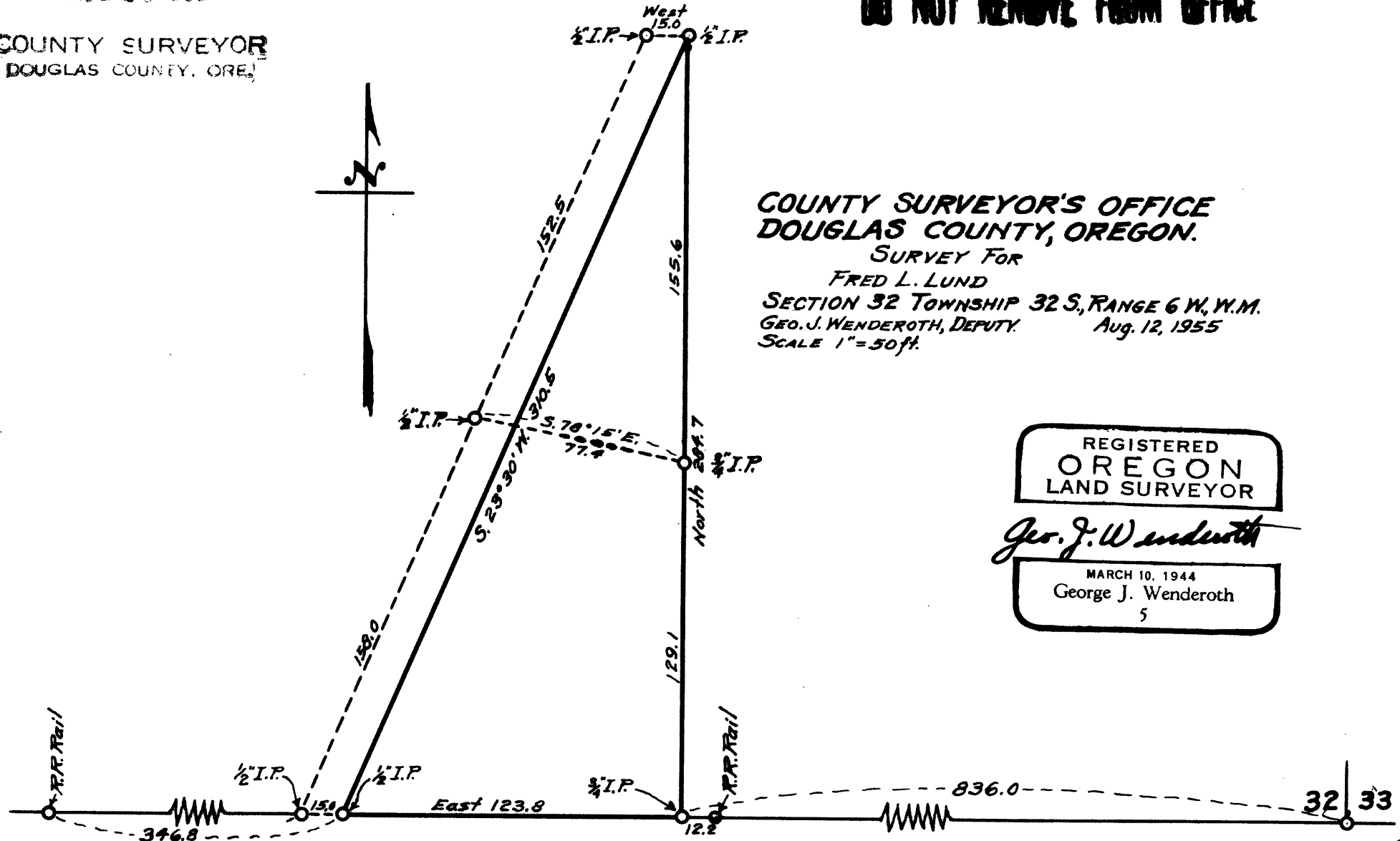
FILED

RECEIVED

AUG 25 1955

COUNTY SURVEYOR
DOUGLAS COUNTY, ORE.

COUNTY SURVEYORS FILE DATA
DO NOT REMOVE FROM OFFICE



COUNTY SURVEYOR'S OFFICE
DOUGLAS COUNTY, OREGON.

SURVEY FOR
FRED L. LUND
SECTION 32 TOWNSHIP 32 S, RANGE 6 W, W.M.
GEO. J. WENDEROTH, DEPUTY. Aug. 12, 1955
SCALE 1" = 50 ft.

REGISTERED
OREGON
LAND SURVEYOR

Geo. J. Wenderoth

MARCH 10, 1944
George J. Wenderoth
5