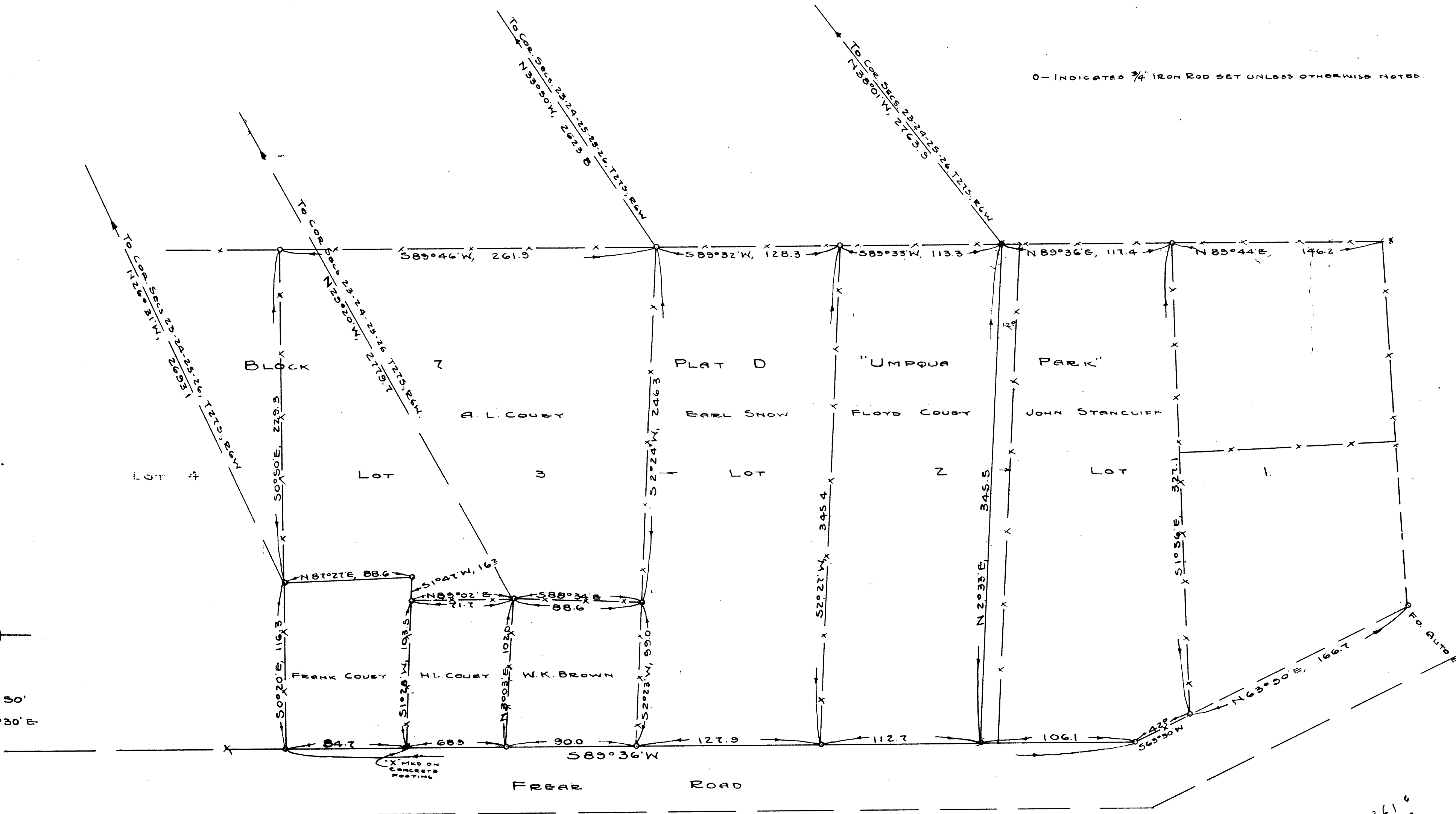
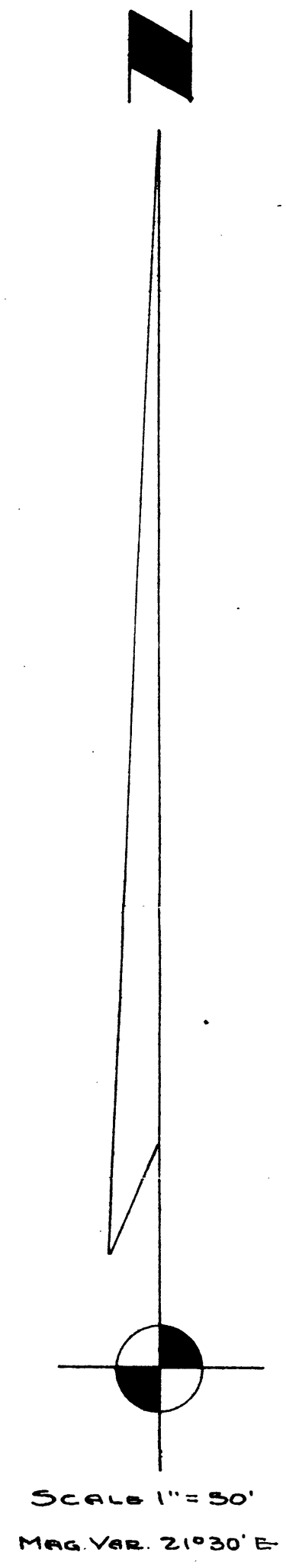


O - INDICATED 3/4" IRON ROD SET UNLESS OTHERWISE NOTED



SURVEY TO ESTABLISH PROPERTY CORNERS
BASED ON OCCUPANCY - IN
LOTS 1-2-3, BLOCK 7, PLAT D, "UMPQUA PARK"

GRANT AND EVANS, ENGINEERS
ROSEBURG, OREGON
SURVEYED, JAN. 1952



Handwritten calculations:

261.0
128.3
390.2
117.1
106.2
653.5

378.76
252.58
631.28

261.9
128.3
390.2
113.3
503.5
117.1
620.9
146.2
767.1