

3 prints
file one return tracing

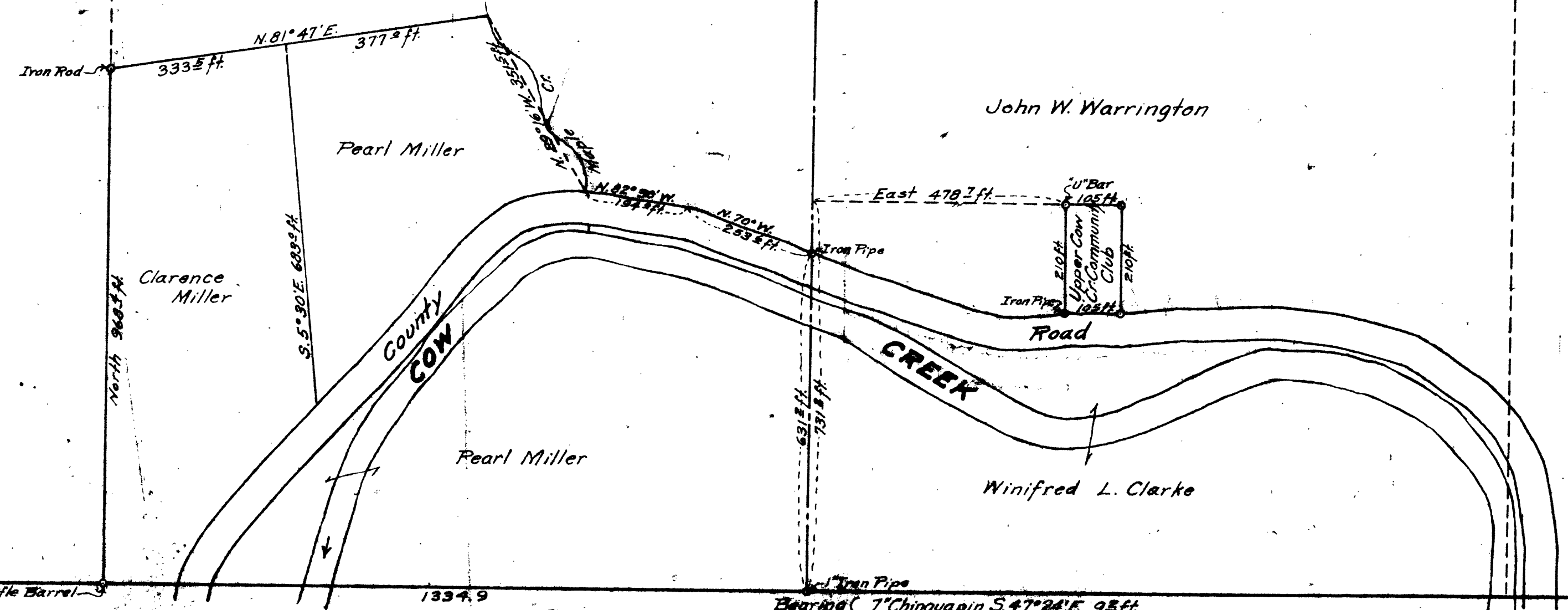
Sec. 32 T. 31 S., R. 3 W.

John W. Warrington

John W. Warrington

Guy Johnson

Douglas County



REGISTERED
OREGON
LAND SURVEYOR

Geo. J. Wendroth

MAR 21 1944
George J. Wendroth
5

C. S. File No. 46/133

Bearing 34° Fir S. 34° W. 54 ft.
Trees 28° Fir N. 72° 01' E. 305 ft.
15° Fir N. 81° 36' W. 638 ft.

S. 22° E. 593 ft.
N. 57° 10' W. 1408 ft.

S. 89° 52' E. 5339.5
Bearing 7° Chinquapin S. 47° 24' E. 95 ft.
Trees 10° Fir N. 47° 40' W. 338 ft.

1" Box 32 33