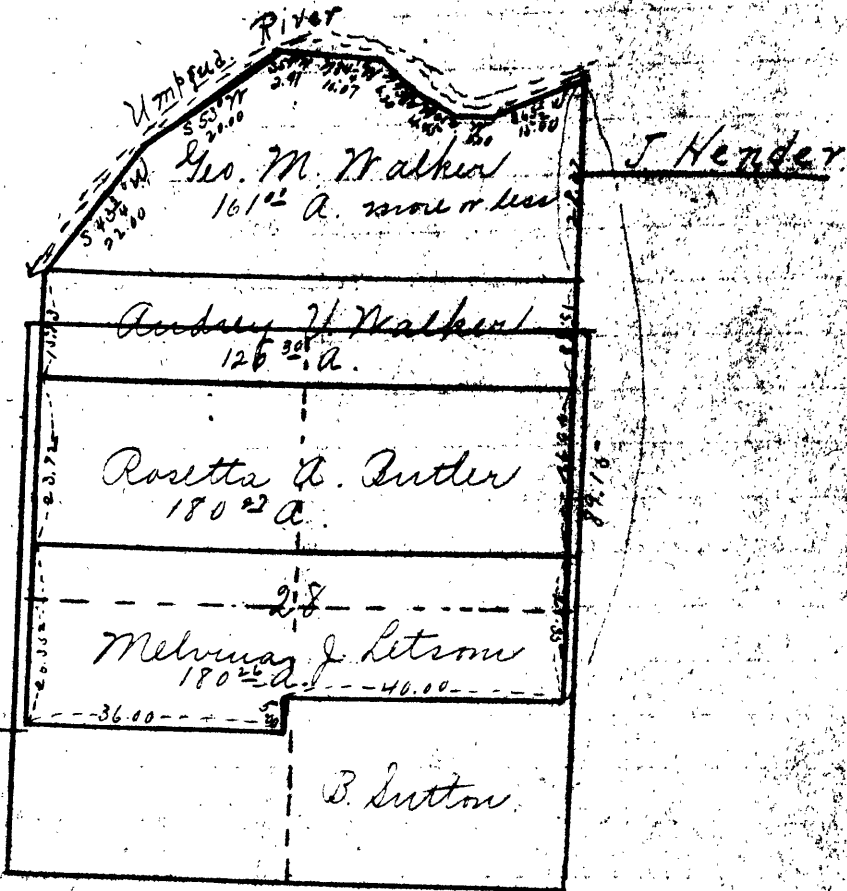


Roll of Alameda

Wm Hathaway  
Don. Cl. No 44

Exhibit A



J. Sawyer  
Cl. No. 45

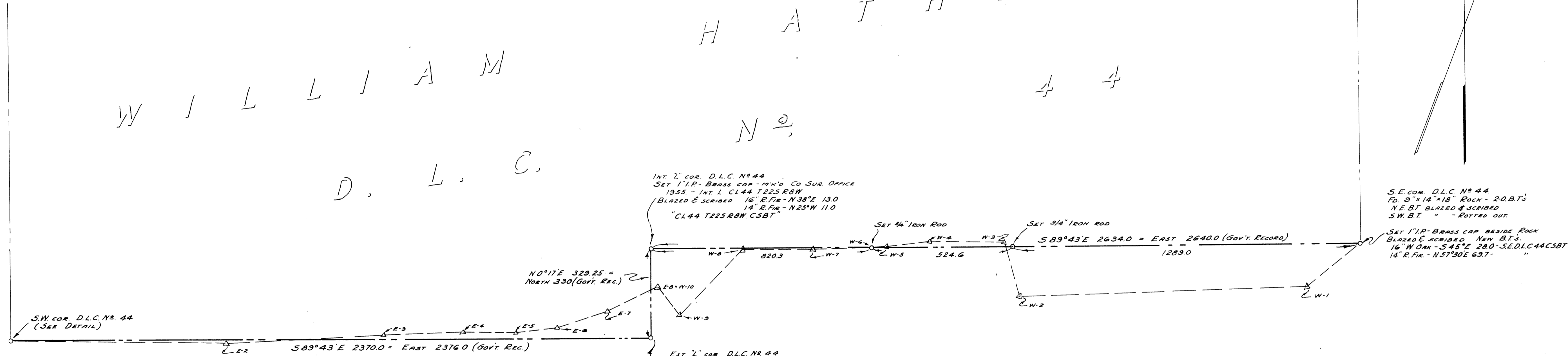
Tp. 22 S. R. 8 W.

O. F. Thell  
Surveyor

Filed Sep. 27, 1909  
C. H. ... County Clerk  
P. C. ... Deputy Clerk

WILLIAM  
D. L. C.

HATWAY  
N<sup>o</sup>.



SW COR. D.L.C. NO. 44  
(SEE DETAIL)

INT. L. COR. D.L.C. NO. 44  
SET 1" I.P. BRASS CAP - M'X'D CO SUR OFFICE  
1955 - INT L CL 44 T225 RBW  
BLAZED & SCRIBED 16" R. FIR - N38°E 130  
14" R. FIR - N25°W 110  
"CL 44 T225 RBW CSBT"

SE COR. D.L.C. NO. 44  
FD. 9" X 14" X 18" ROCK - 20 B.T.'S  
NE BT. BLAZED & SCRIBED  
SW BT. " - EOTTED OUT.  
SET 1" I.P. BRASS CAP BESIDE ROCK  
BLAZED & SCRIBED NEW B.T.'S  
16" W. OAK - S45°E 280 - S.E. D.L.C. 44 CSBT  
14" R. FIR - N57°30'E 63.7 - "

BLAZED & SCRIBED 14" RED FIR - WCSWCL 44 T225 RBW

FD. 48" FIR SHAB - BARK SCRIBED  
C44 ON NE. FACE - USED AS  
S.W. COR. OF D.L.C. NO. 44

FD. 30" FIR STUMP - BARK  
SCRIBED 4" AT TOP OF  
CUT

EAST 3.0  
SET 1" I.P. BRASS CAP M'X'D  
WC 3.0 WEST TO SW COR. D.L.C.  
44 T225 RBW COUNTY SURVEYOR'S  
OFFICE 1955.

BLAZED & SCRIBED 8" RED  
FIR - WCSWCL 44  
CSBT

HUB NO.	OFFSET		TO TRUE LINE
	N	S	
E-2	11.05	" "	" "
E-3	15.05	" "	" "
E-4	21.9	" "	" "
E-5	20.9	" "	" "
E-6	37.8	" "	" "
E-7	38.1	" "	" "
E-B W10	141.1	188.2	" "
W-9	247.0	" "	" "
W-8	2.4	" "	" "
W-7	5.3	" "	" "
W-6	1.95	SET 3/4" I. ROD	
W-5	4.6	TO TRUE LINE	
W-4	20.9	" "	" "
W-3	15.8	SET 3/4" I.R. 30' EAST	
W-2	187.8	187.8	TO TRUE LINE
W-1	159.1	159.1	" "

COUNTY SURVEYOR'S OFFICE  
DOUGLAS COUNTY, OREGON

SURVEY TO ESTABLISH SOUTH  
BOUNDARY OF D.L.C. NO. 44.

REGISTERED  
OREGON  
LAND SURVEYOR  
James W. Byron  
NOV. 6, 1954  
JAMES W. BYRON  
303

BEN B. IRVING  
SURVEYED FEBRUARY 15, 1955  
JAMES W. BYRON - DEPUTY  
SURVEYED FOR J.R. LETSOM

COUNTY SURVEYOR  
BY  
SCALE 1" = 200'

DETAIL  
SCALE 1" = 10'