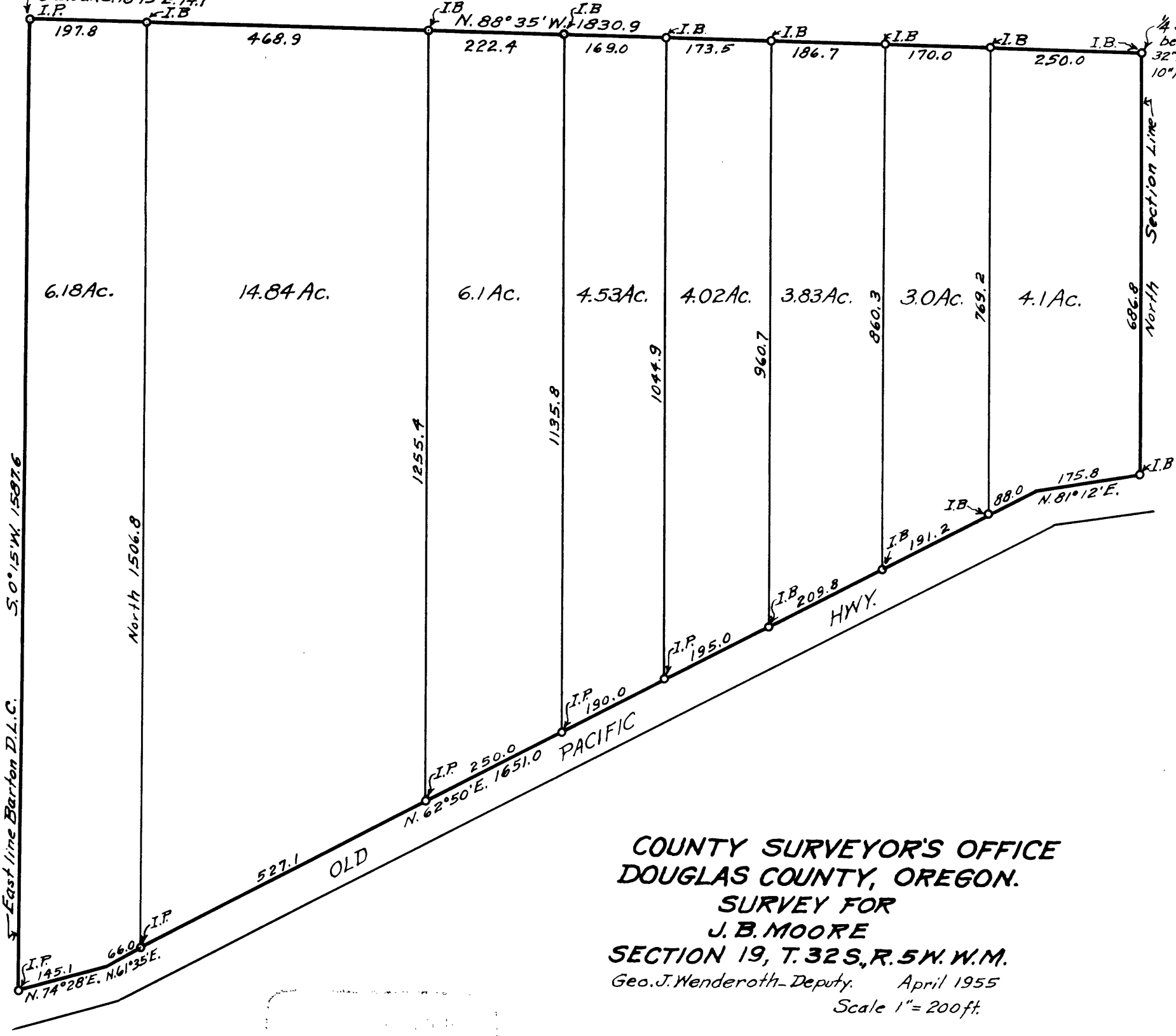


N.E. Cor. Wm. Barton D.L.C. #39
 24" W. Oak S. 35° W. 34.3
 24" Fir N. 41° 30' W. 9.2
 8" B. Oak S. 78° 15' E. 14.1
 I.P.

1/4 Section Corner
 bet. Sec. 19 & 20
 32" B. Oak S. 29° W. 31.7
 10" Fir N. 62° 30' E. 26.0



COUNTY SURVEYOR'S OFFICE
 DOUGLAS COUNTY, OREGON.
 SURVEY FOR
 J. B. MOORE
 SECTION 19, T. 32 S., R. 5 W. W.M.
 Geo. J. Wenderoth - Deputy. April 1955
 Scale 1" = 200 ft.

Geo. J. Wenderoth

O.S. File No. 46/121