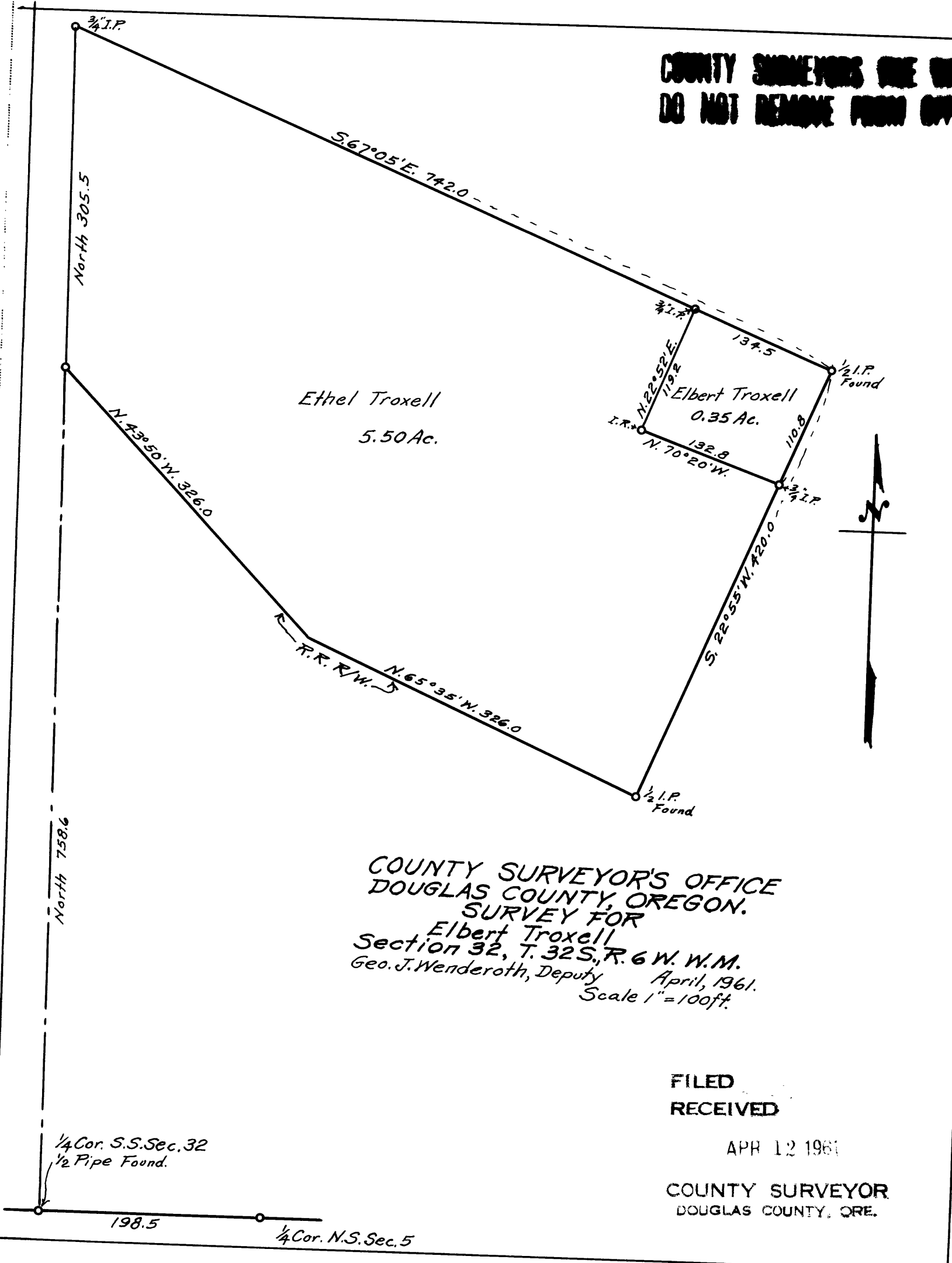


COUNTY SURVEYORS ARE NOT TO BE
DO NOT REMOVE FROM OFFICE



COUNTY SURVEYOR'S OFFICE
DOUGLAS COUNTY, OREGON.
SURVEY FOR
Elbert Troxell
Section 32, T. 32 S., R. 6 W. W.M.
Geo. J. Wenderoth, Deputy April, 1961.
Scale 1" = 100ft.

FILED
RECEIVED

APR 12 1961

COUNTY SURVEYOR
DOUGLAS COUNTY, ORE.