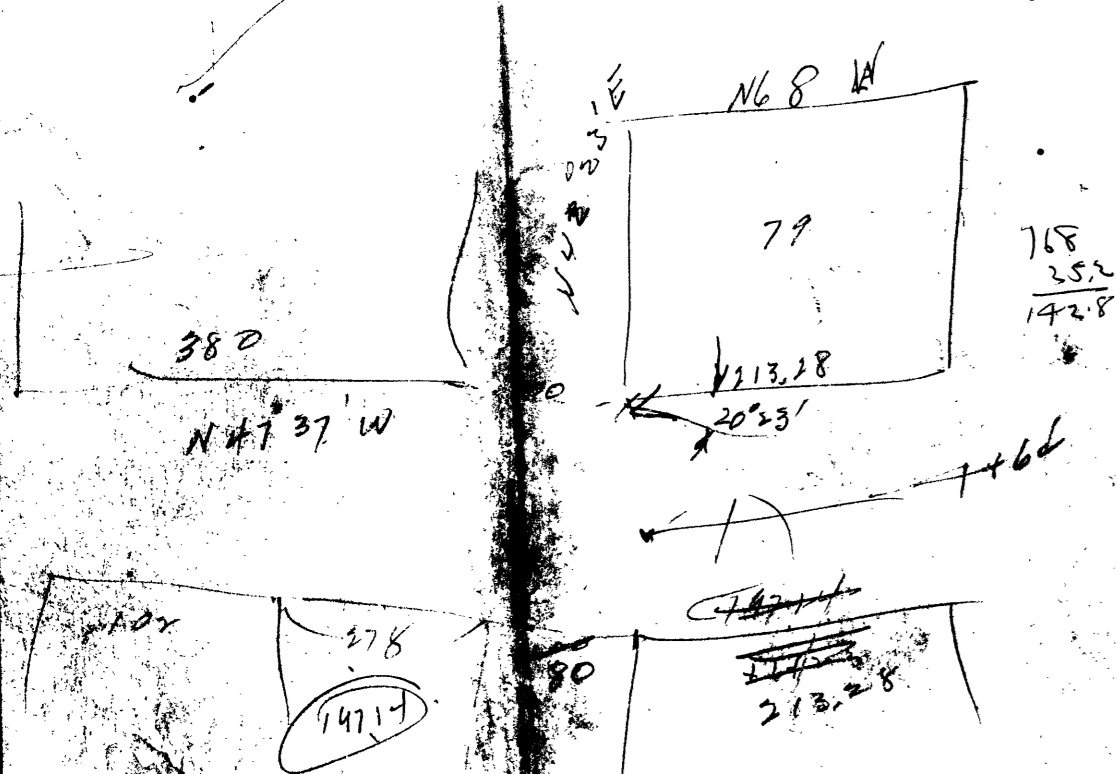


40.3
58.5
98.8
2/3.28
102.16



Handwritten calculations:
179.60
113.28
66.32
20.25
20.25

UMPQUA RIVER

Umpqua Mill Dock and Boom Permit Line
Dock & Boom Permit, 10.2 Ac. between low water and Harbor Line, (from Buckingham) in Sec. 35.

U.S. Harbor Line $\frac{1}{2}$ Buckingham, 1924
N. 68° W. 261.33'

1915 Tidelands Survey from Buckingham map of 1924
N. 57° W. 773'

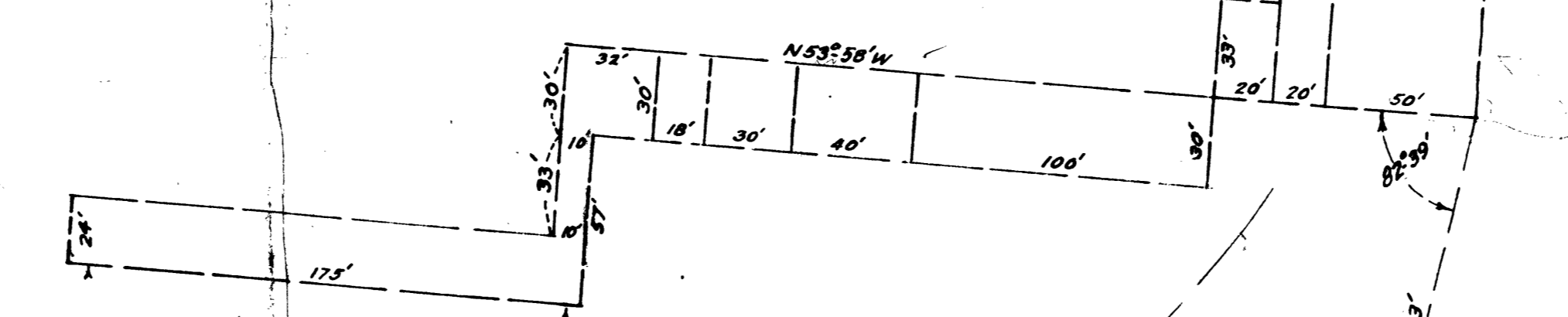
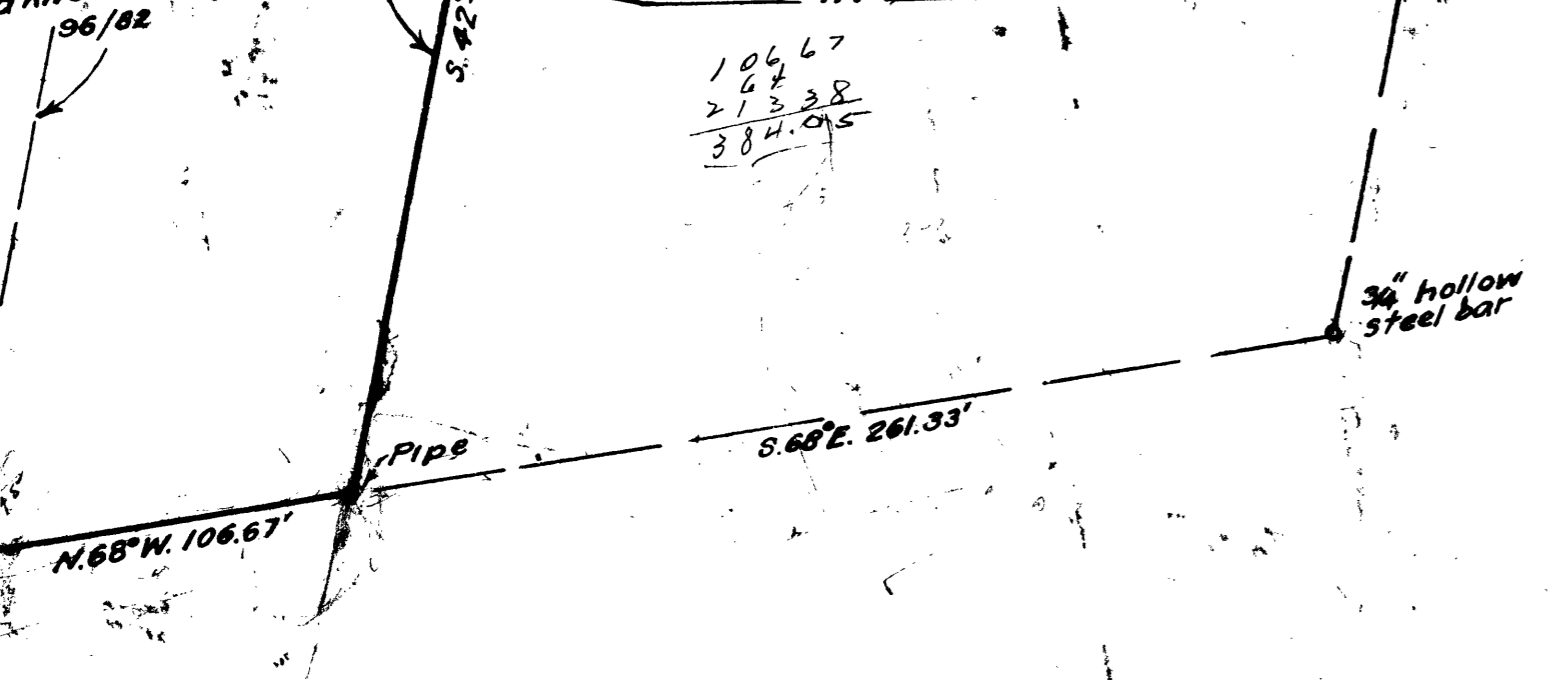
5.64 Ac. Tide Land
Shore Line (June, 1941 Survey)

U.S. Meander Line N. 60° 35' W. 1148'

Block 79
Amended Plat
Railroad Add'n
Reedsport, Ore.

Umpqua River Navigation Co.
06/82

W.P. Road to Umpqua Mills & Lumber Co.
06/01



H STREET

17TH ST

ST. (OR H ST)

Block 1 of Umpqua Addition to Reedsport, Ore.

Block 2 of Umpqua Addition to Reedsport, Ore.

Block 3

This portion abandoned
North R/W Line State Hy. Loc'n

State Highway

Lot 6, Sec. 35
S. 1/4 SE 1/4