

DIETZGEN NO. 385-6

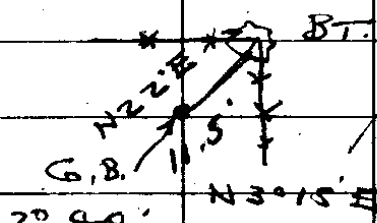
EST. TRUE LINE S 17-516
T 30 S PAUG

C. S. File No. 76/83

17116
SEC COR. 2021 T30R4

BTS. OK EXCEPT 20" FIR

37' W HAS BEEN CUT STUMP ONLY
LEFT GUN BARREL IN PLACE
BLAZED & SCRIBED 10" R. FIR 149' W
36°



4

2°40'
1°20' L

19°25'
73°

396.5 ✓

166° ✓

N4°35'E

-29°17'
300°

3

1°10'
0°35' R

20.83 ✓

-25°30'
230.8

2

POT ✓

251.0 ✓

N4° E ✓

-16° 00'

7° 25'
3° 42 1/2 R

N4° E

261.4

1

54.45

N0°17'E

JAN. 17-55
J.P. BYRON
H.P. KING
H.P.

DIETZGEN NO. 385-6

94813 ✓

87221 ✓

90259 ✓

94126 ✓

C. S. File No. 46/83

			N 4° 10 1/2' E	- 23° 55'
				1935'
10		0° 26'		
		0° 13'		
	554			
9		POT		
				+ 21° 35'
	436.5		N 4° 23 1/2' E	148°
				- 5° 10'
				300°
8		0° 49'		
		0° 24 1/2' R		
	1202			
				- 2° 00'
				1203'
7		POT		
				+ 15° 40'
	427.5			129°
				47°
				+ 14° 55'
			N 3° 59' E	300°
6		0° 02'		
		0° 01' L		
				497.1
	648.4		N 4° 00' E	L 255°
				- 9° 00'
				300°
5		1° 30'		
		0° 45' R		
	382.9			- 3° 30'
				924
			N 3° 15' E	
				- 14° 20'
				300°
4				

91994 ✓

88273 ✓

99580 ✓

99939 ✓

96285 ✓

96778 ✓

x
x
x
x
x

98769 ✓

99813 ✓

96887 ✓

DIETZEN NO. 385-6

C. S. File No. 46/83

17 | 16
20 | 21

1437.6

4109.7'
6000'
3000'
-3000'
3000'

8000'
3000'
-2000'
1680'
-2800'
3000'

N4°22'E

11

0°23'
0°11 1/2' R

-15'25"
181.7
-21°45'
296.3

628.4

N4°10'E

653

75
67

DIETZGEN NO. 385-6

.99452 ✓ 109.7
298.4

.99863 ✓ 299.6

.99027 ✓ 297.1

.99939 ✓ 167.9

.88295 ✓ 264.9

1437.6 ✓

.91402 ✓

.92881 ✓

C. S. File No. 46/83

RENEW $\frac{1}{4}$ COR. 17/16 T30R4

NO EVIDENCE OF ORIG. COR.
OR BTS FOUND.

WE RAN A TRAVERSE LINE
FROM THE S.W. COR. 516 TO N.W.
COR. 516 THEN CORRECTED
TO TRUE LINE RESET $\frac{1}{4}$ COR.
AT PROPORTIONAL DIST. $\$$ ON
TRUE LINE.

SET BRASS CAP $\$$ 1" I.P. MKD
CO. SU. OFFICE 1954 1/43 7/16
T30R4-W.

FROM WHICH A 12" FIR BEARS
N67°E 415 - BLAZED $\$$ SCRIBED.

A 10" FIR BEARS S40°W
44.8' - BLAZED $\$$ SCRIBED

VAR 21 $\frac{1}{4}$ °

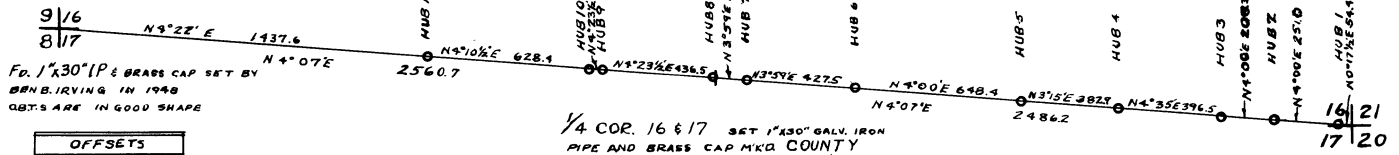
NOTE - COR. IS LOCATED
IN CENTER OF LOGGING ROAD.

CS FILE FOLDER

CONTAINS

MORE

INFORMATION



Fd. 1" x 30" (P) & BRASS CAP SET BY
 BEN B. IRVING IN 1948
 O.B.T.'S ARE IN GOOD SHAPE

1/4 COR. 16 & 17 SET 1" x 30" GALV. IRON
 PIPE AND BRASS CAP M'D. COUNTY
 SURVEYORS OFFICE 7/4 5/17/16 T30SR4W
 BY PROPORTIONAL MEASUREMENT
 FROM WHICH: 12" FIR BEARS N 67° E 41.5' N.B.T.
 10" FIR BEARS S 90° W 44.8' N.B.T.

Fd. GUN BARREL AND O.B.T.'S EXCEPT
 20" FIR 57" W SET NBY
 10" FIR N 9° W 36.0'

OFFSETS	
HUB NO.	MOVE
	EAST
1	3.63
2	4.12
3	4.52
4	4.80
5	5.03
6	5.29
7	5.54
8	5.81
9	6.06
10	6.31
11	6.57

**COUNTY SURVEYORS FILE DATA
 DO NOT REMOVE FROM OFFICE**

COUNTY SURVEYOR'S OFFICE
 DOUGLAS COUNTY, OREGON

SURVEY TO ESTABLISH TRUE LINE
 BETWEEN SECTION 16 & 17 T30S, R4W, W.M.



BEN B. IRVING COUNTY SURVEYOR
 SURVEYED JAN. 17, 1955 BY
 JAMES W. BYRON - DEPUTY SCALE 1" = 500'
 SURVEYED FOR G. NEUNER, E. SUMNER & A. ROWE