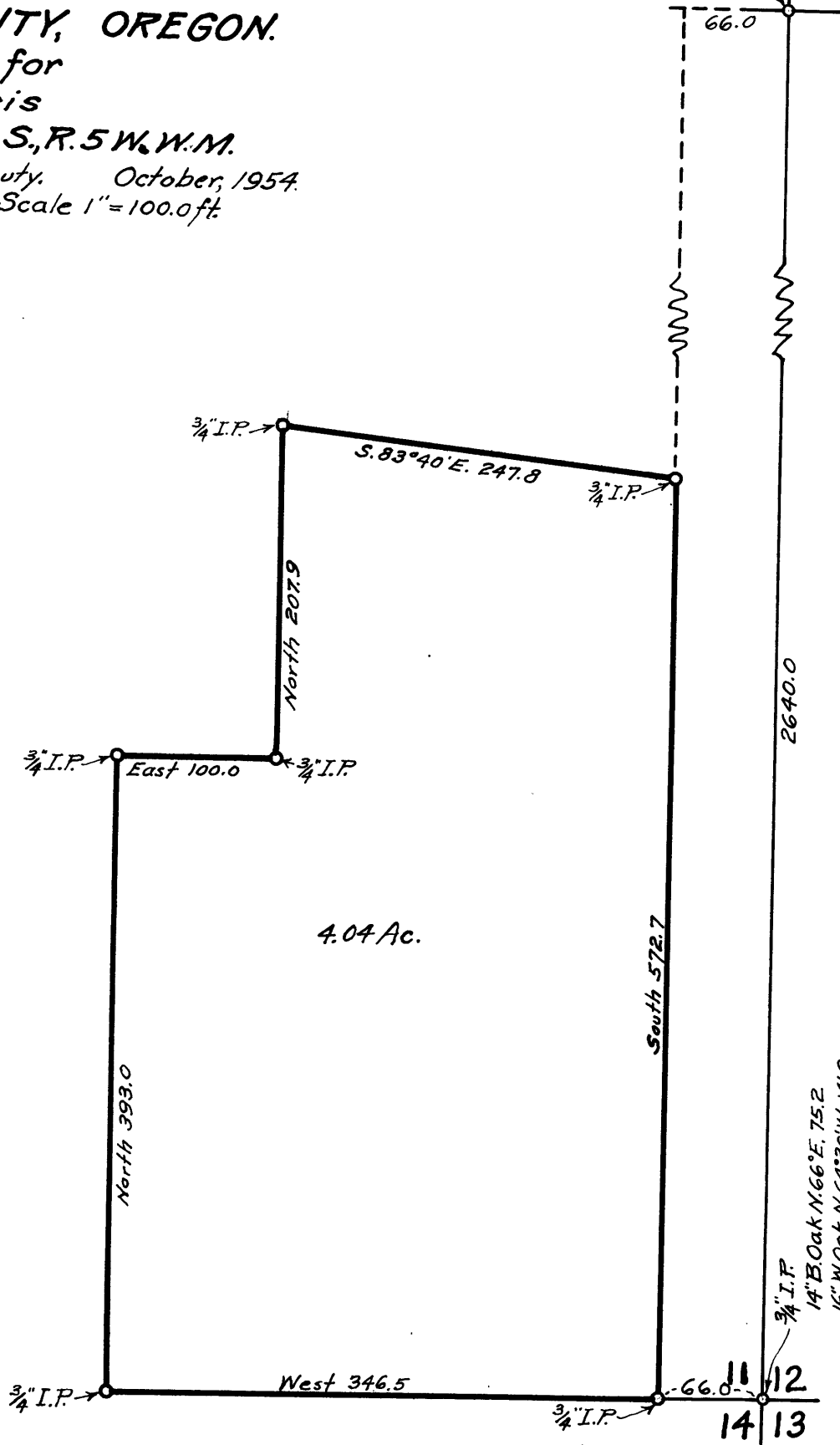


COUNTY SURVEYORS FILE DATA  
DO NOT REMOVE FROM OFFICE

COUNTY SURVEYOR'S OFFICE  
DOUGLAS COUNTY, OREGON.

Survey for  
C. E. Morris  
Section 11, T. 32 S., R. 5 W., W.M.  
Geo. J. Wenderoth, Deputy. October, 1954.  
Scale 1" = 100.0 ft.

1/4 Corner Axle Shaft  
50" W. Oak S. 85° W. 19.1  
12" B. Oak S. 34° 50' W. 60.9  
12" B. Oak N. 85° 30' E. 68.4



FILED  
RECEIVED

OCT 20 1954

COUNTY SURVEYOR  
DOUGLAS COUNTY, ORE.

C. S. FILE 46/52