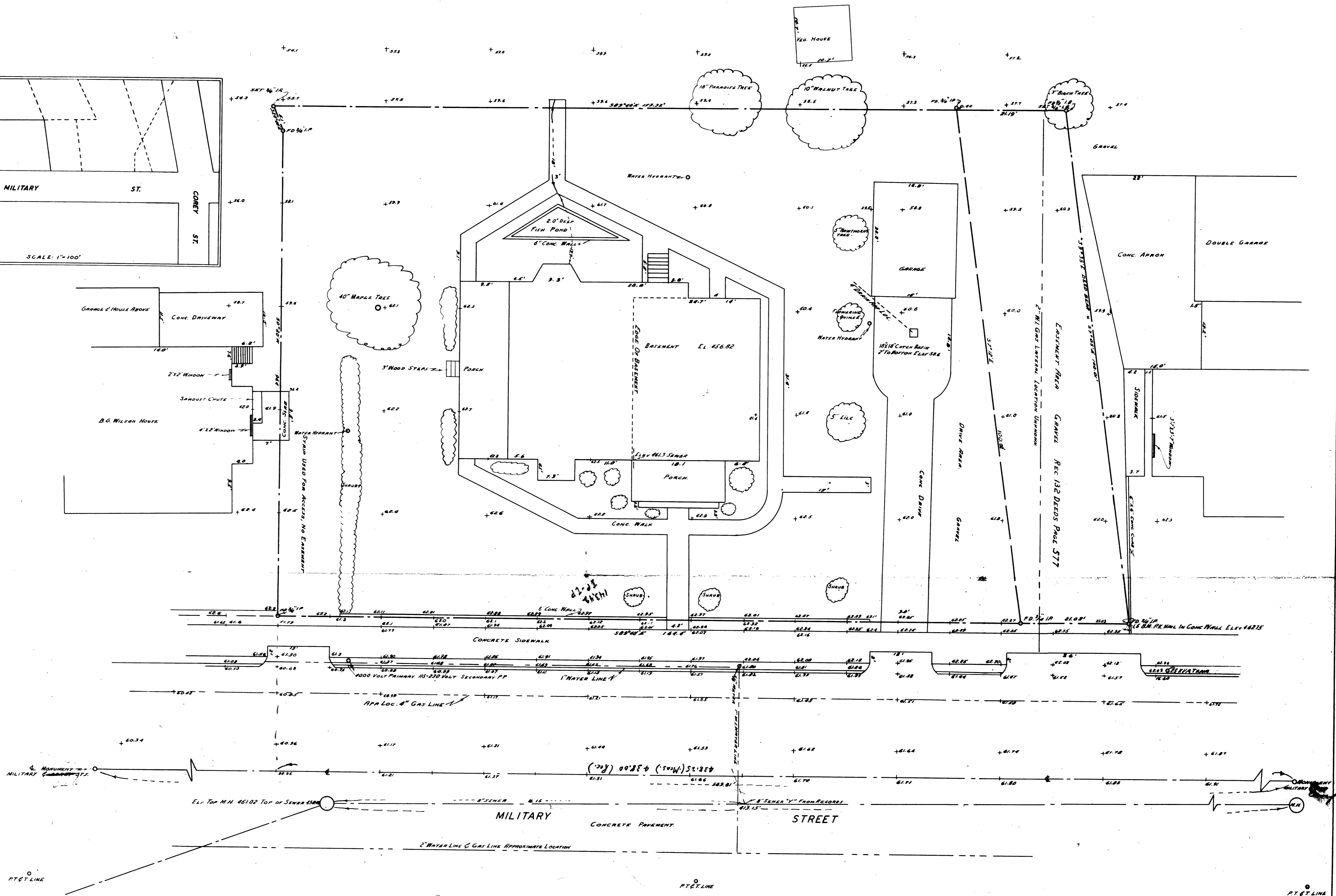


RESIDENTIAL ZONE I, ORD. 1185 SEC 4
 SET BACKS - FRONT = 15'
 BACK = 10' ORD. 1085
 SIDE = 5'

SCALE: 1"=10'



COUNTY SURVEYOR'S OFFICE
 DOUGLAS COUNTY OREGON
 SURVEY OF METES & BOUNDS DESCRIPTION
 SECTION 24, T. 27 S., R. 6 W.
 CITY OF ROSEBURG
 FOR STANDARD OIL CO. LEASE

BEN B. IRVING COUNTY SURVEYOR
 BY J. W. BYRON DEPUTY
 SURVEYED JULY 6, 1954

REGISTERED
 OREGON
 LAND SURVEYOR

JAMES W. BYRON
 NOV. 6, 1923
 JAMES W. BYRON
 303