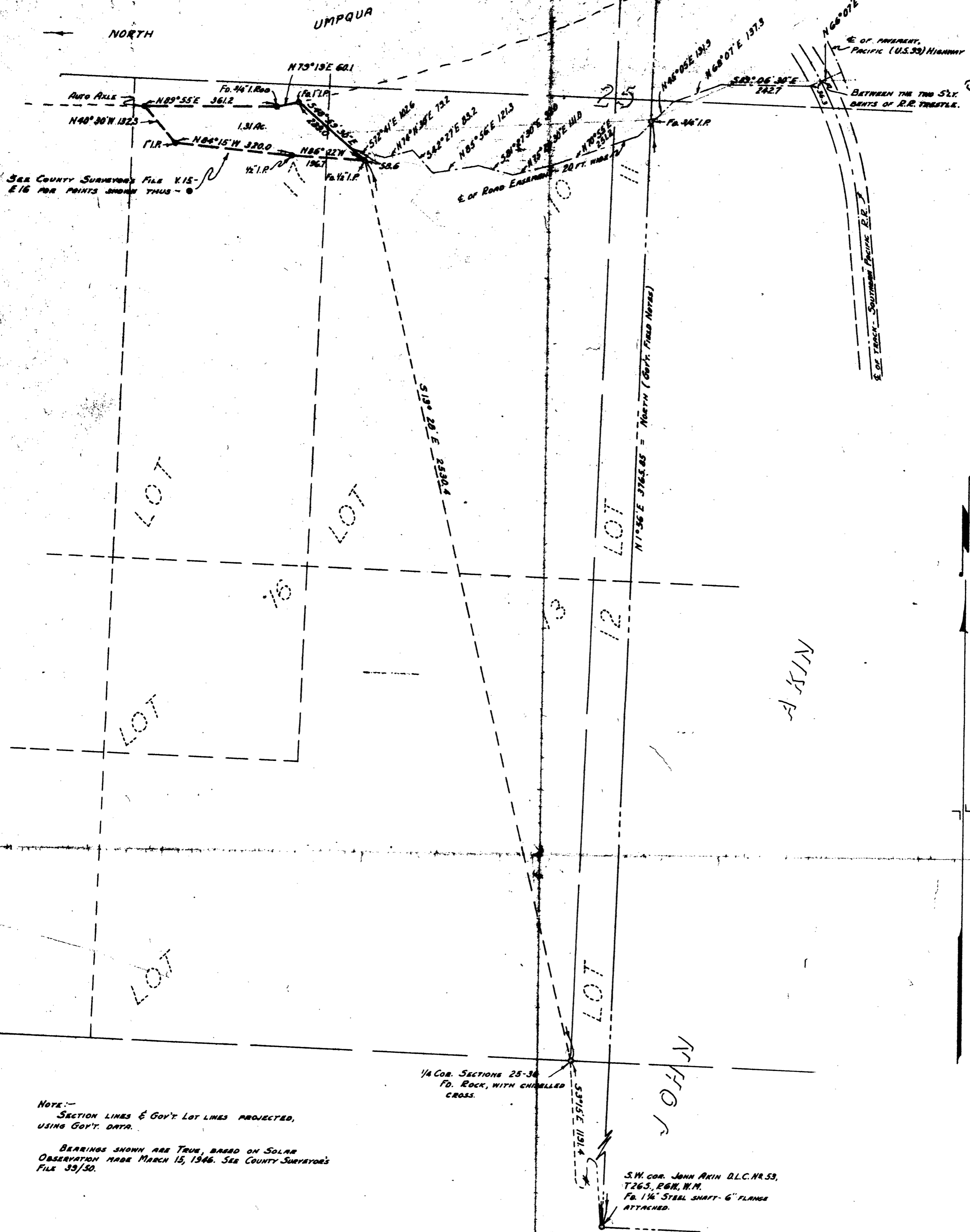


D.L.C. No 53



COUNTY SURVEYOR'S OFFICE
DOUGLAS COUNTY, OREGON

SURVEY FOR DEED DESCRIPTION
SECTION 25, T26S, R6W, W.M.

BEN B. IRVING COUNTY SURVEYOR
SURVEYED OCT. 24, 1952 SCALE 1" = 200'

See Revised Map as of 6/10/54

