

ORLEY R THOMPSON SUBDIVISION

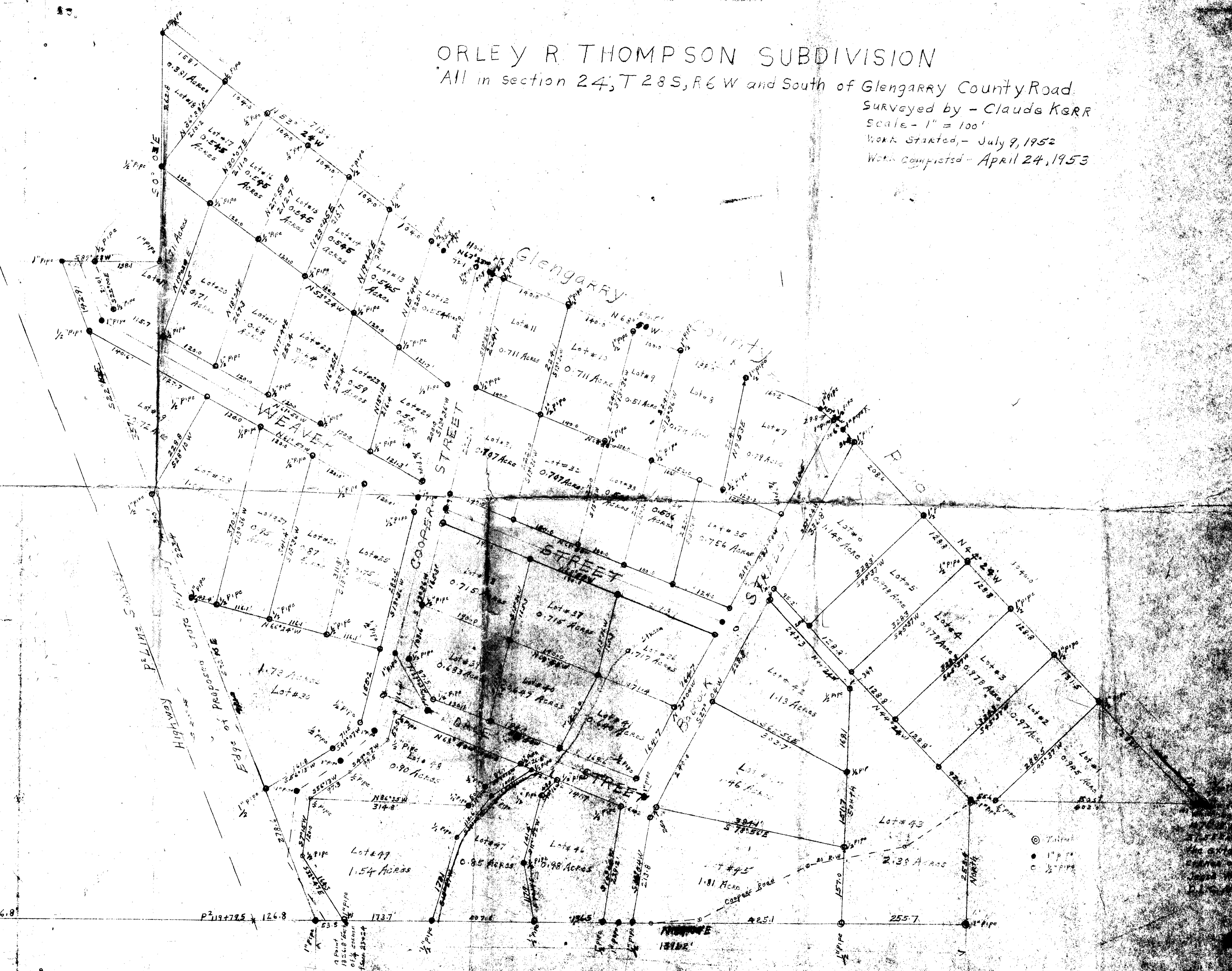
All in section 24, T28S, R6W and South of Glengarry County Road

Surveyed by - Claude KERR

Scale - 1" = 100'

Work Started - July 9, 1952

Work Completed - April 24, 1953



23624
1/4 CORNER

1146.8'

P2194785 126.8'

173.7'

255.7'