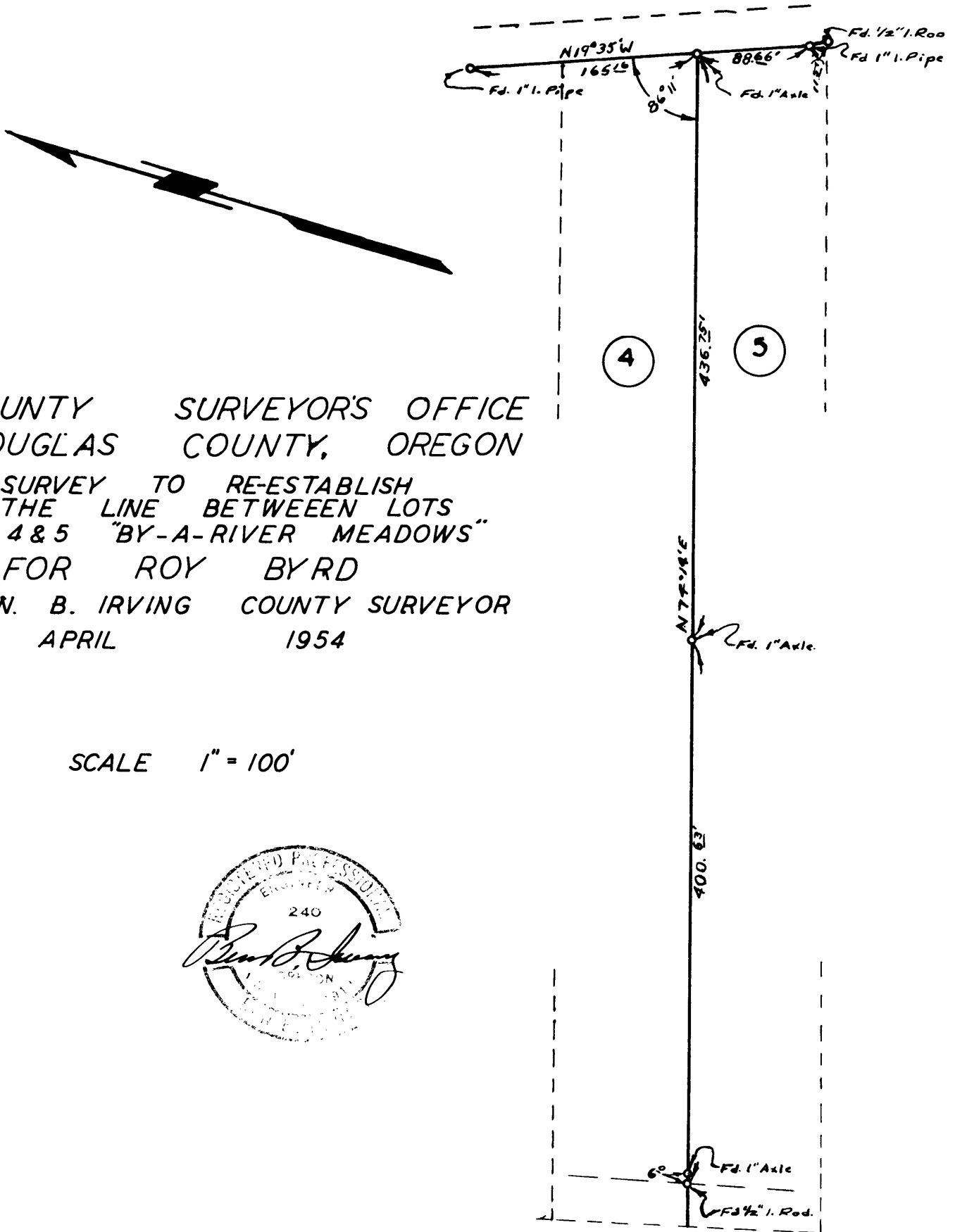


COUNTY SURVEYORS FILE DATA
DO NOT REMOVE FROM OFFICE



COUNTY SURVEYOR'S OFFICE
DOUGLAS COUNTY, OREGON

SURVEY TO RE-ESTABLISH
THE LINE BETWEEN LOTS
4 & 5 "BY-A-RIVER MEADOWS"
FOR ROY BYRD
BEN. B. IRVING COUNTY SURVEYOR
APRIL 1954

SCALE 1" = 100'

