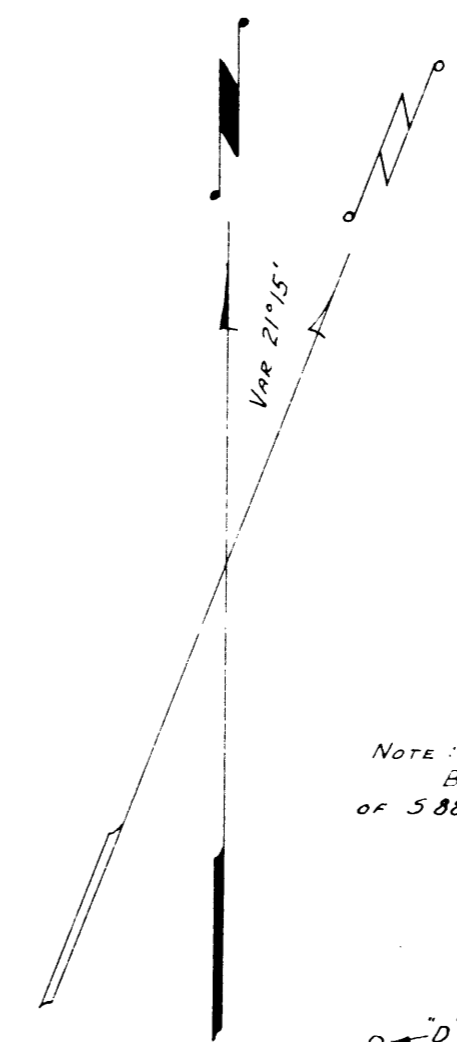


OFFSETS FROM SURVEYED REFERENCE LINE TO TRUE LINE BETWEEN 1/4 CORNERS.

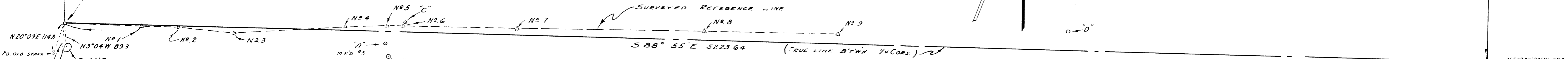
Stake No. 1	4.5	NORTH
" 2	4.0	NORTH
" 3	19.9	NORTH
" 4	13.2	SOUTH
" 5	22.4	SOUTH
" 6	21.05	SOUTH
" 7	25.6	SOUTH
" 8	33.0	SOUTH
" 9	36.4	SOUTH

SET 1" IRON PIPE - BRASS CAP M'D COUNTY SURVEYOR'S OFFICE 27/26 34/35 T205 R6W 1954  
 FD. 40" FIR SNAG - N59°E 13.2 SCRIBED S26 BT  
 " SLAB OF BT - N30°W 27 SCRIBED S27 BT



NOTE: BEARINGS ARE BASED ON THE MAGNETIC COURSE OF 588°00'E FROM 1/4 COR 33/34 TO STAKE NO. 1.

SET 1" IP - BRASS CAP M'D. COUNTY SURVEYOR'S OFFICE 1/4 S 33/34 T205 R6W  
 FD. 20" RED FIR - 537°30'E 19.8 SCRIBED S 1/4  
 " 0 BT - N52°W 26.4 - BLAZED - NOT CUT OUT.  
 BLAZED & SCRIBED 10" RED FIR - 529°29'E 29.8  
 1/4 S 34 CSBT, 14" RED FIR - N78°55'W  
 53.2 1/4 S 33 CSBT



N20°09'E 114.8  
 N3°04'W 89.3  
 FD. 60" FIR - OLD ALE MARKS ON NW & S.W. FACES.  
 FD. 2" I.P. - LOOSE

FD. 12" STAKE M'D  
 " APPROX. LITTLE SEC. 34 - 40 CH.  
 W 1/4 COR."

SET 1" IRON PIPE - BRASS CAP M'D COUNTY SURVEYOR'S OFFICE 34/35 T205 R6W 1954  
 BLAZED & SCRIBED 9" RED FIR - N78°E 62.2 FT. - 1/4 S 35 CSBT.  
 BLAZED & SCRIBED 12" RED FIR - N51°45'W 34.7 FT. - 1/4 S 34 CSBT.

NOTE: POINTS A, B, C, & D WERE MARKED WITH STAKES OF TREE LIMBS, NOT MARKED, EXCEPT A. THESE APPEAR TO HAVE BEEN SET RECENTLY.

A to 1/4 cor 33/34	- N86°50'30"W	1180.3
B " " "	- N84°32'W	1191.7
C " " "	- S89°24'W	1249.0
D " " "	- S89°59'30"W	3681.2
2"x2" CENTER SEC. 34 TO 1/4 COR 33/34	- N87°21'W	2639.6

COUNTY SURVEYOR'S OFFICE  
 DOUGLAS COUNTY, OREGON

LEGAL SURVEY TO ESTABLISH  
 EAST-WEST MID-SECTION LINE,  
 SECTION 34, T20 S, R6 W, W.M.

BEN B. IRVING COUNTY SURVEYOR  
 SURVEYED APRIL 26-29, 1954 1" = 200'  
 SURVEYED FOR C.C. BACKUS

SET 1" IRON PIPE - BRASS CAP M'D COUNTY SURVEYOR'S OFFICE 34/35 T205 R6W 1954  
 FD. 48" FIR - N49°W 19.8 - SCRIBING GONE  
 " " " - S41°W 23.1 - " "  
 " " " - N30°E 52.0 - BLAZED - NOT CUT OUT  
 BLAZED & SCRIBED 8" CEDAR - N83°E 48.5 3  
 535 T205 R6W CSBT.  
 BLAZED & SCRIBED 14" CEDAR - N41°W 78.0  
 534 T205 R6W.

CS FILE FOLDER

CONTAINS

MORE

INFORMATION