

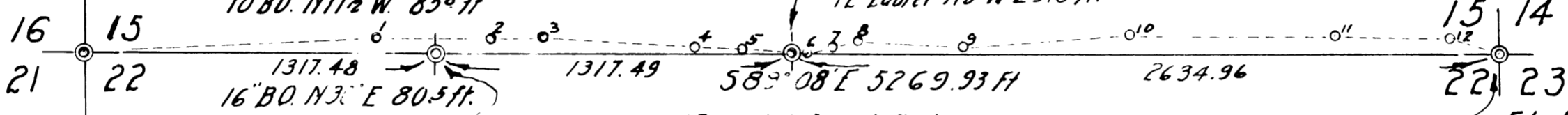
1/4 Cor. Secs. 16-15
 OBT 30° BO N015E 714.1ks
 OBT (stump) N1° W. 717 ks
 10" W.O. N47 1/2° E 462.6 ft.
 10" BO N22 1/2° W 372.4 ft.

OFFSETS FROM TRAVERSE HUBS TO TRUE LINE.

Hub	Offset	South	54.0 ft
2	"	58.8 "	
3	"	55.4 "	
4	"	25.8 "	
5	"	20.5 "	
6	"	6.2 "	
7	"	31.6 "	
8	"	43.5 "	
9	"	38.6 "	
10	"	81.6 "	
11	"	75.4 "	
12	"	73.1 "	

Corner Secs. 15-16-21-22
 Stump OBT 20° W.O. S39° E 33.1ks.
 Stump OBT 30° W.O. N77° E 109.1ks.
 Stump OBT 20° W.O. S27° W 332.1ks.
 SET 1" 36" Iron Pipe with brass cap
 New Bts 14" B.O. S39° 15' W 50° ft.
 10" B.O. N17 1/2° W 85° ft.

1/4 Cor. Secs. 15 at midpoint.
 Set 1" 36" Iron Pipe with brass cap.
 10" Fir S47° W 20.9 ft.
 12" Laurel N13° W 29.8 ft.

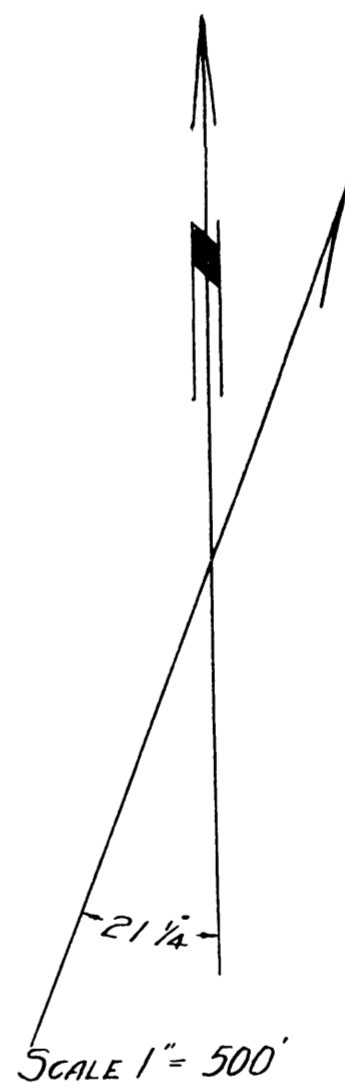


W 1/4 Cor. Secs. 15-22 Set 5/8" Iron Rod
 20" B.O. S1° E 64.5 ft.
 14" W.O. N60 1/2° E 195.8 ft.

Fd. Bolt & stump OBT
 12" B.O. S30° W 81.1ks. Set
 1" 36" Iron Pipe with brass cap.
 10" Fir N85° E 31.0 ft.
 10" Fir S24° E 33.3 ft.
 10" Fir S72° 30' W 46.6 ft.
 8" Fir N42° W 25.0 ft.

NOTE: Base Bearings, between Sec. Cor. 15-16-21-22 and Hub 1 N 86° 00' E from
 compass needle, Var. 2 1/4° E. All angles turned in deflection and doubled. Distances
 measured with a 300 ft steel tape. West line of sections 15-22 and 27 were not
 surveyed but the corners indicated were renewed from original bearing trees
 or their stumps which were positively identified.

1/4 Cor. Secs. 21-22
 Not found



21 22
 28 27
 Sec. Cor. Secs. 21/22
 28/27
 rd OBT 10" W.O. S8 1/2° W 126.1ks
 Set 1" Iron Pipe with brass cap.
 18" Fir N37 1/2° W 45.7 ft.
 14" Fir S27 1/2° E 27.4 ft.
 10" Fir N24 1/2° 59.0 ft.

1/4 Cor. Secs. 28-27
 rd OBT 20° BO S32° E 63.1ks.
 Set 1" Iron Pipe with brass cap
 10" Fir S34° E 62.0 ft.
 10" Fir S17° W 20.6 ft.

COUNTY SURVEYOR'S OFFICE
 SURVEY OF THE NORTH BOUNDARY
 SECTION 22, T 27 S., R 7 W., WM.
 for

GEORGE BARTER *George Barter*

BEN. B. IRVING COUNTY SURVEYOR

MARCH-APRIL 1954