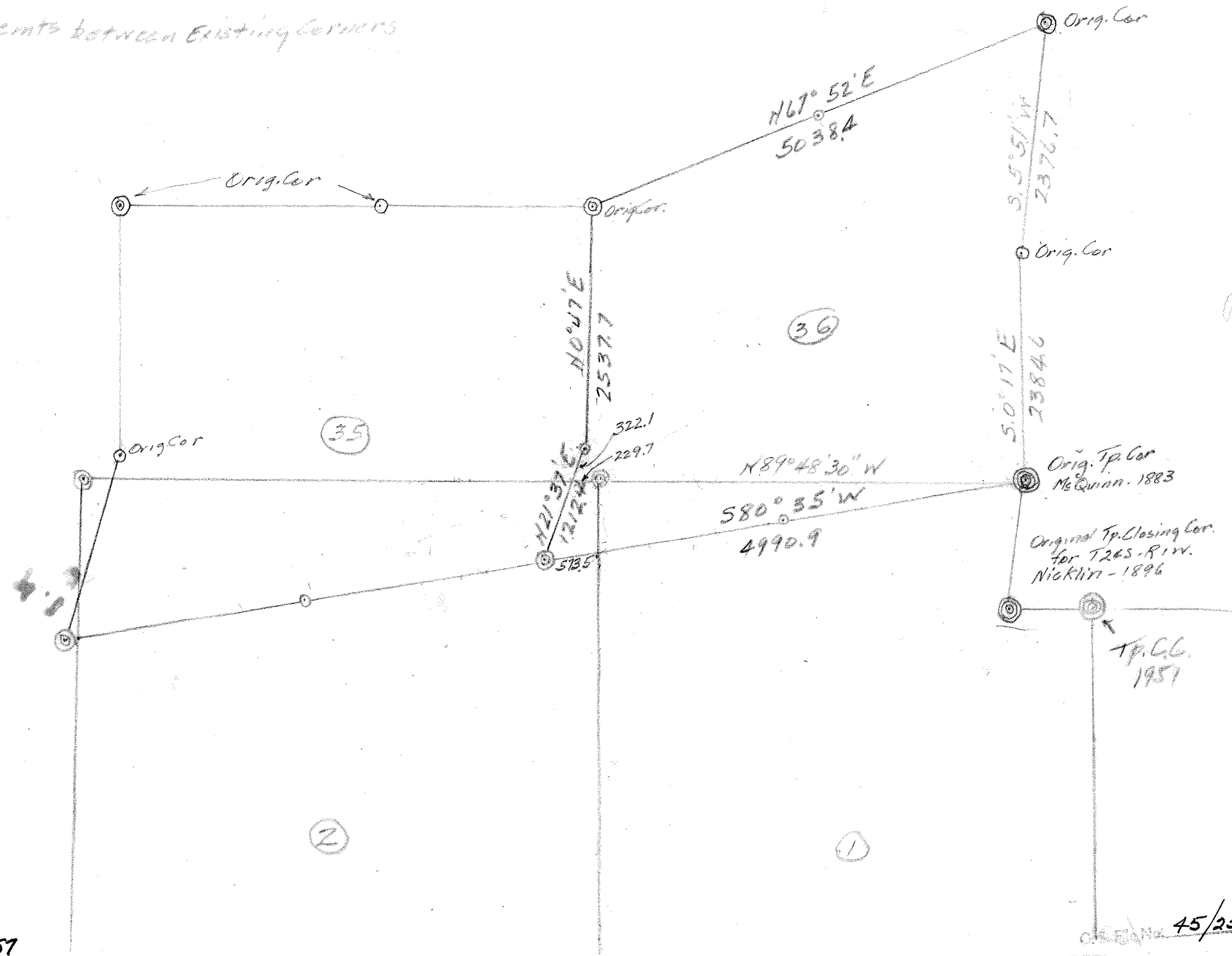


Establishments 1951 for T24S-R2W

" " " T25S-R2W

Retracemts between Existing Corners



45/257

45/257

44 Sec. Cor. 35/36 T24SR2W

Hd. Brass Cap with Tree 53° W 16 1/2
partially chopped out. No series
marks visible in upper blaze.

Burl showed base under chopped
out no series marks.

The face of both blazes ~~were~~ showed
that they were not made by axe
as they showed no flaking or
axe cuts - They were evidently
showing along annual rings.

Upper blaze showed ± 80 rings
over blaze with 20 additional
over inner blaze. Apparent
dia. at inner blaze ± 8" - Outer
blaze ± 12". As these are on
the upper side of tree on steep
slope ± 35° probably caused by
Rocks rolling down hill & as
survey made in 1891 should
not be more than 60 annual
rings over blaze.

Benjamin

Feb-24-1954

C. S. File No. 45/257

T 24 S R 2 W

No. 1^W hct. 34+35

14° 30'

Through heavy timber.

12.00 Creek 1 1/2 NE

16.25 " 12 SE

40.00 Set basalt stone 10x9x8

Pine 8° 53° E 42 1/2

Chinquapin 5° N 56 W 7

80.00 Post

Hemlock 16° N 19° E 30 1/2

Fir 10° 53° E 65

Cedar 18 S 21 W 29

Cedar 20 N 8° W 24

589° 48' E Random 26 5/5 14°

80.20 Intersect 32 1/2 S of Cor.

589° 58' W 26-35 14.20

7.25 Rock Ch 60 1/2 SE

24.00 Top spur.

30.00 Bot. ravine.

40.10 1/4 Cor Post

Fir 12° N 52° E 22

Cedar 8° 57° W 30

C. S. File No. 45/25

62.30 Top Spur N.

73.00 Crk 1 1/2 NE

80.20 Cor 26-27-34-35

Cor 2-3-34-35

Fir 20° N 30° E 26 1/2

" 10° 57' E 43

Maple 20 S 82° W 39

Fir 12 N 32 W 28

1-2-3 5-36

Fir 30° N 21° E 18

Fir 41 S 20 E 69

Maple 8° S 32 W 15

Fir 20° N 82 W 20

N 0° 0' W hct 35-36 1/2 N 1/2

33.00 Top Spur SW.

40.00 Post 1/4 Cor

Fir 6° N 41 E 9

" 7° S 32 W 16

59.00 bottom ravine

80.00 Stone 15 x 10 x 5"

Dist 1952 Feet

Cor 25-26-35-36

Fir 24° N 55 E 35

Hemlock 12° S 63 E 53

Fir 36 S 81° W 22

Fir 18 N 25 W 53

2894

C. S. File No. 45/257

CS FILE FOLDER

CONTAINS

MORE

INFORMATION