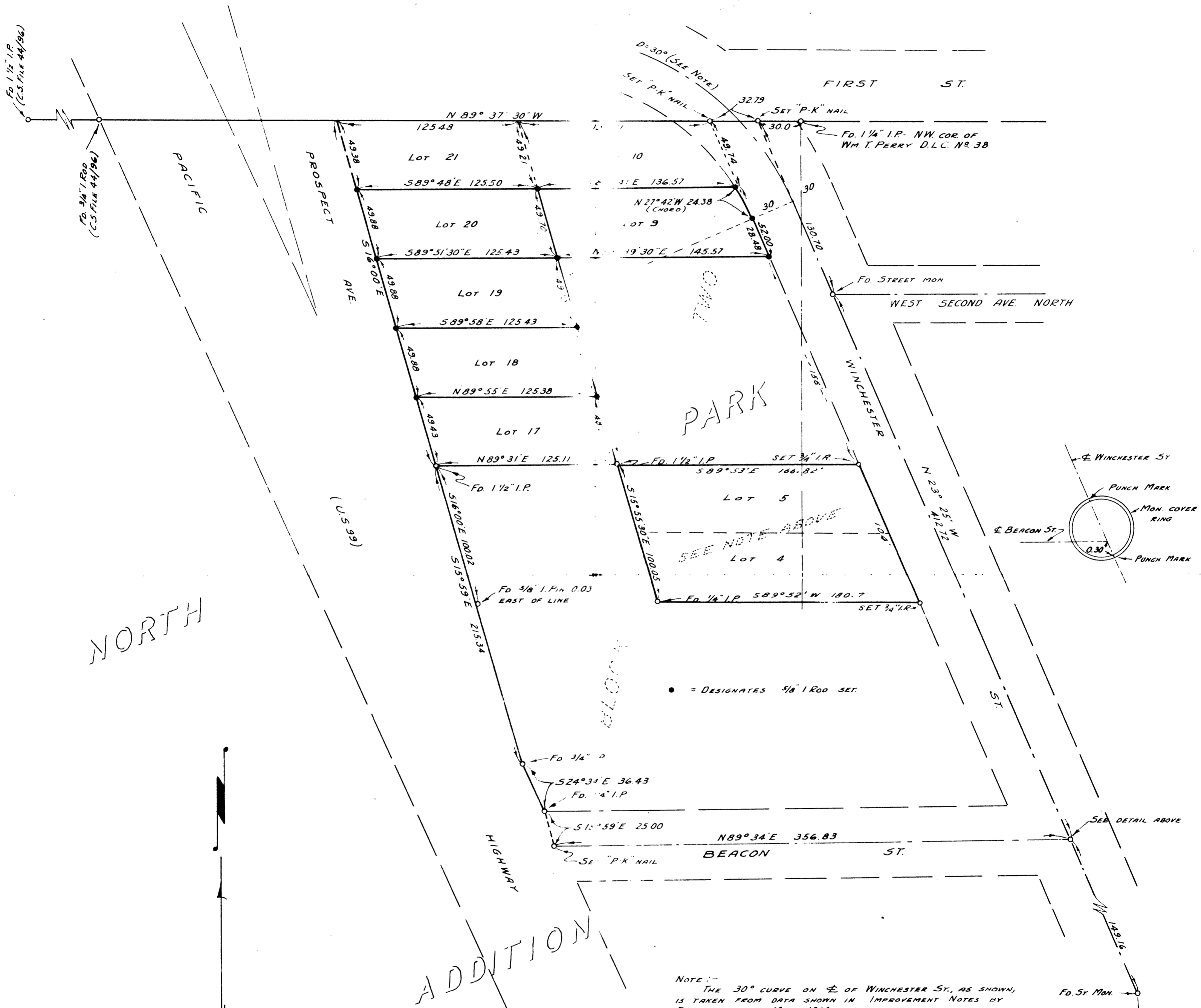


NOTE  
 LOTS 4 & 5; SURVEY TO SET  
 PROPERTY CORNERS, SURVEYED  
 FOR JACK MYERS, NOV. 29, 1955  
 SEE C.S. FILE 45/251  
 FRED M. DABBY COUNTY SURVEYOR  
 BY JAMES W. BYRON DEPUTY



NORTH

NOTE:-  
 FOUND CORNERS FOR LOTS 12, 14, 15, & 16, PLACED,  
 USING PLAT DISTANCES FROM BEACON ST, BY AN EARLIER  
 SURVEY (NOT BY THIS OFFICE). AS THE TOTAL DISTANCE  
 BETWEEN BEACON ST AND THE WESTERLY EXTENSION IS  
 LESS THAN THAT SHOWN BY THE ORIGINAL PLAT OF  
 NORTH PARK ADDITION, THE PROPORTED DISTANCES WERE  
 USED IN LAYING OUT LOTS 9, & 18 TO 20 INCL. NO CHANGES  
 WERE MADE IN THE MONUMENTS SET ON THE OLDER  
 SURVEY, WHICH SHOULD HAVE BEEN PROPORTED.

NOTE:-  
 THE 30° CURVE ON E OF WINCHESTER ST, AS SHOWN,  
 IS TAKEN FROM DATA SHOWN IN IMPROVEMENT NOTES BY  
 FLEISER, DATED MAY, 1914.  
 THE BEARING OF N 16° 00' W, FROM PLAT OF 'NORTH PARK  
 ADDITION', ON EAST LINE OF PROSPECT AVE. IS USED AS BASE  
 BEARING FOR THIS SURVEY.

COUNTY SURVEYOR'S OFFICE  
 DOUGLAS COUNTY, OREGON

SURVEY TO ESTABLISH LOT  
 CORNERS, NORTH PARK ADD,  
 ROSEBURG, OREGON

*Ben B. Irving*

BEN B. IRVING COUNTY SURVEYOR  
 SURVEYED JAN., 1954 SCALE 1" = 50'  
 SURVEYED FOR A.J. TOWNSEND