

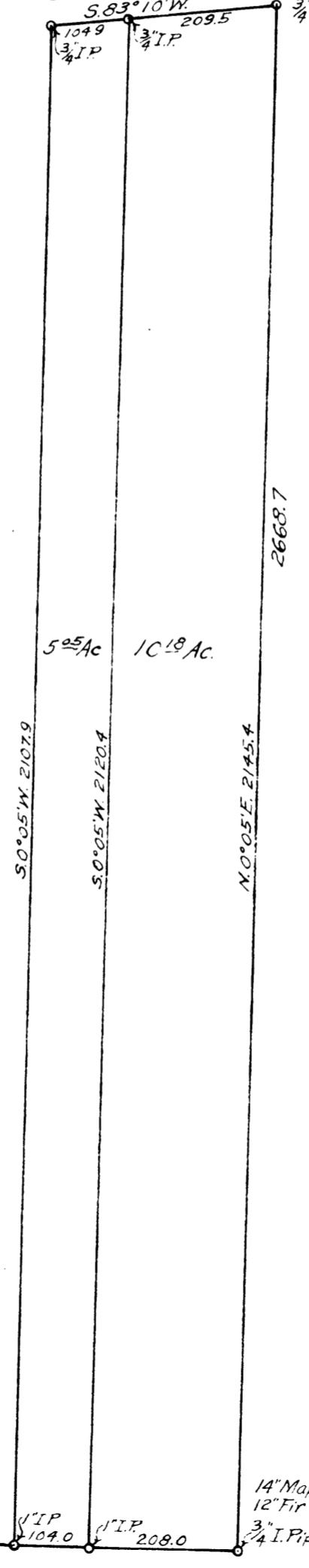
**COUNTY SURVEYOR'S OFFICE
DOUGLAS COUNTY, OREGON.**

SURVEY FOR
J.B. MOORE
Section 20, T. 32 S., R. 5 W., W.M.
Geo. J. Wenderoth, Deputy
July 1953 Scale 1" = 200ft.

Geo. J. Wenderoth

I. Rod. $\frac{1}{16}$ Cor.
as set by Markham

Old Pacific Hwy.
S. 83° 10' W. 209.5
3/4" I.P. 3/4" I.P. 3/4" I.P.



20" Alder N. 57° 20' W. 28.5
14" Ash N. 73° 20' E. 57.3
14" Alder S. 52° 15' W. 59.5
8" Alder S. 71° 10' E. 19.2
19 | 20 1/2" I.P.
30 | 29 1016.4

14" Maple N. 32° 42' W. 91.5
12" Fir N. 49° 10' E. 67.4
3/4" I. Pipe 1/16 Cor