

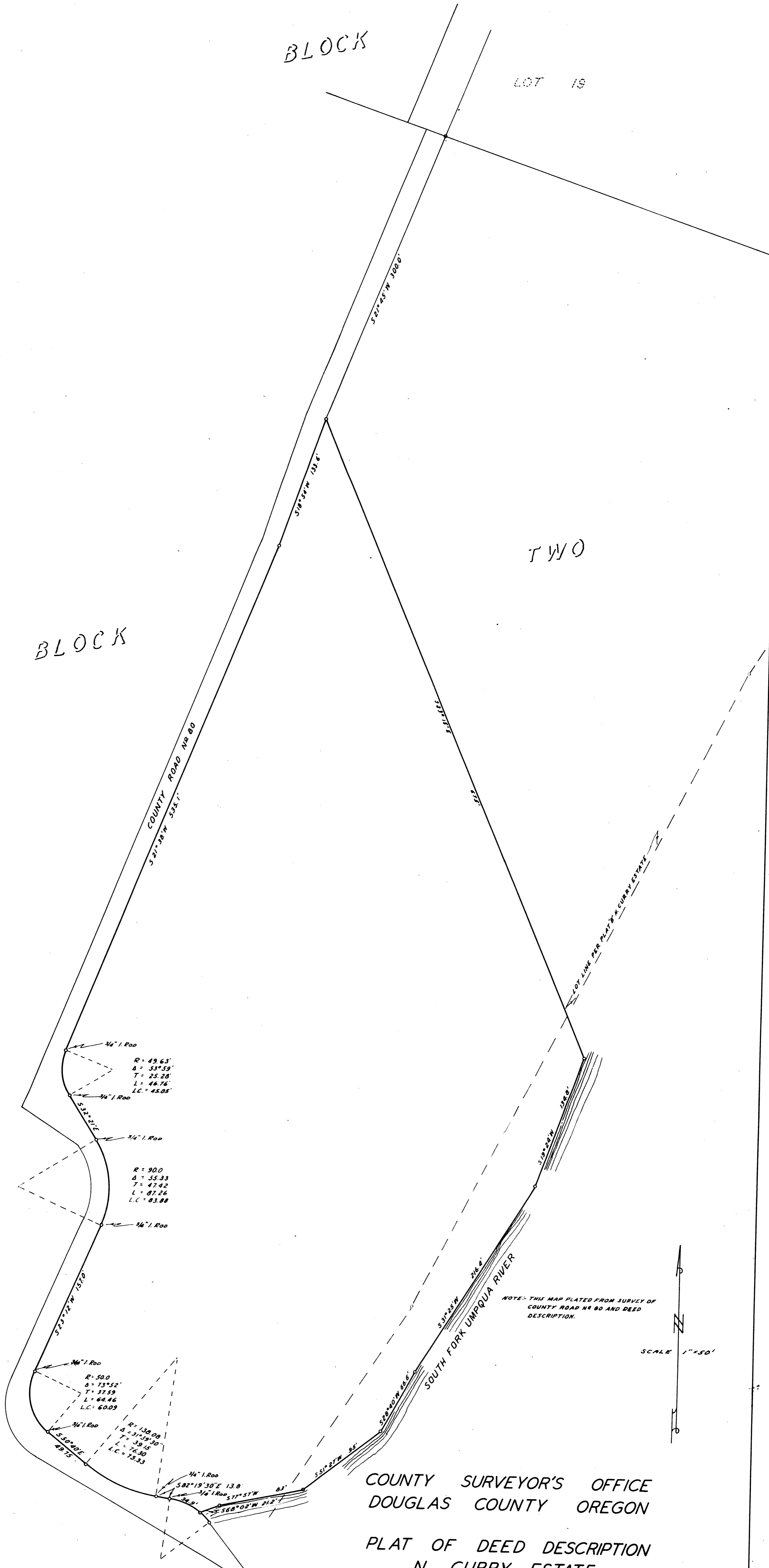
ONE

BLOCK

LOT 19

TWO

BLOCK



COUNTY SURVEYOR'S OFFICE
DOUGLAS COUNTY OREGON
PLAT OF DEED DESCRIPTION
N. CURRY ESTATE

BEN B. IRVING
JULY 22, 1954

COUNTY SURVEYOR



Ben B. Irving
Per B. Irving