

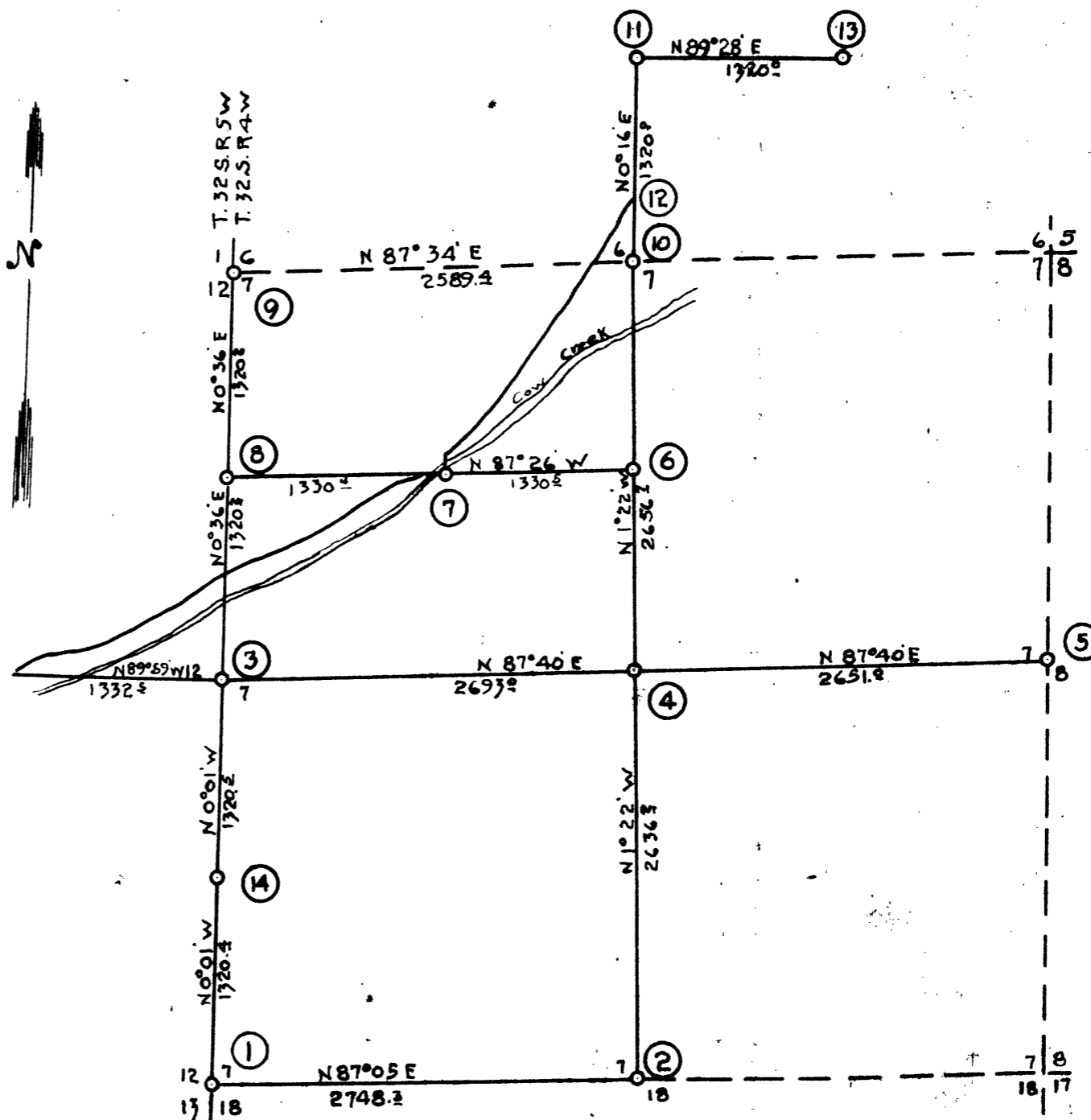
Description of Corners

No.	Kind	Witness Trees
1	Sec. Cor.	2" Bar. 24' Fir N16°E 1832 ft. 30' Fir N71°E 216.9
2	1/4 Cor.	Stake. 18' Pine S27°W 202 18' Pine N43°E 456
3	1/4 Cor.	Iron Bar. 12' Fir N89°W 2182 10' Fir N56°E 1432 ft.
4	1/4 Cor.	I. Pipe. 36' Fir S7°E 642 6' Fir S40°W 622
7	1/4 Cor.	Not Set. B.Ts Present
6	1/16 Cor.	Set Iron Pipe
7	1/16 Cor.	I. Pipe. 12' Ash S55°W 372
8	1/16 Cor.	I. Pipe. 20' Fir N80°W 62
9	Sec. Cor.	I. Pipe. 30' Pine N24°E 268 : 10' B.O. S70°E 474 20' B.O. N7°W 952 : 18' B.O. S44°W 1212
10	1/4 Cor.	I. Pipe. 12' Cedar S91 1/2°W 92 ft. 10' Cedar N7 1/2°W 178 1/2
11	1/16 Cor.	I. Pipe. 12' Laurel S89°W 72 10' Laurel N43°E 112
12	Sec. Line-Co. Rd	I. Pipe. 24' Ash East 532
13	1/16 Cor.	Stake. 48' Fir N70°E 2042
14	1/16 Cor.	I. Bar. 12' Laurel S39°E 292

Map of Section 7  
T. 32 S. R. 4 W. W.M.

OFFICE OF  
H.L. Eppstein, Co. Surveyor  
By G.G. Stewart,  
Deputy

Scale 1 in. = 1000 ft. Bearings True.  
Var. 20° 41' E



C. S. File No. Vol 3 P. 121

MAP FILE M3 132

C. S. File No. 45/186