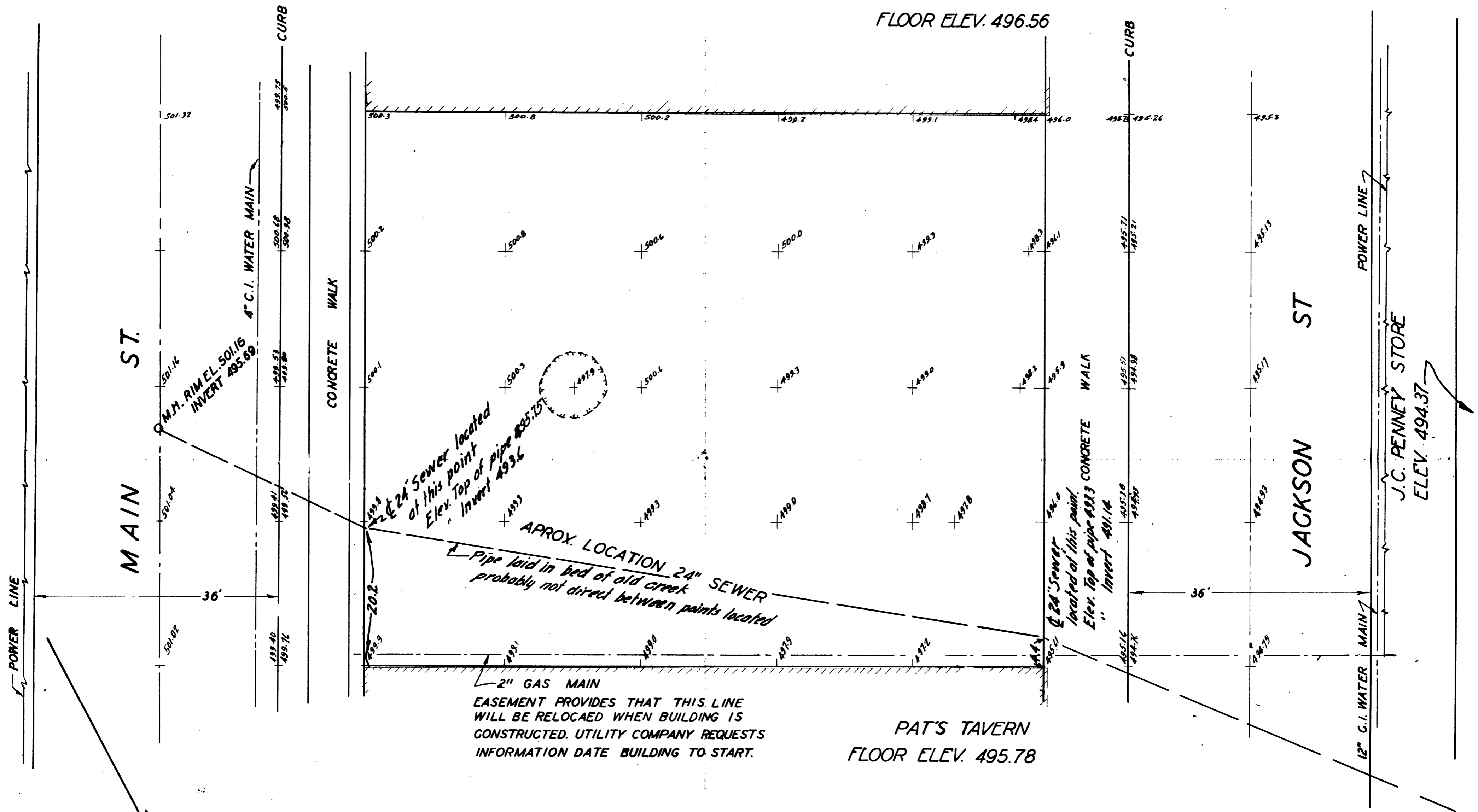


INDIAN THEATRE
FLOOR ELEV. 496.56



APPROX. LOCATION 24" SEWER
Pipe laid in bed of old creek
probably not direct between points located

2" GAS MAIN
EASEMENT PROVIDES THAT THIS LINE
WILL BE RELOCAED WHEN BUILDING IS
CONSTRUCTED. UTILITY COMPANY REQUESTS
INFORMATION DATE BUILDING TO START.

COUNTY SURVEYOR'S OFFICE
DOUGLAS COUNTY OREGON
ELEVATIONS LOT 3 BL. 48
ROSEBURG OREGON

BEN. B. IRVING COUNTY SURVEYOR
MAY 27 1954 SCALE 1" = 10'



Revised June 18, 1954 to show
location and elevations of
24" sewer at points indicated.
Pits dug to sewer pipe.
Ben B. Irving
County Surveyor.

C.S. FILE 45-155-2