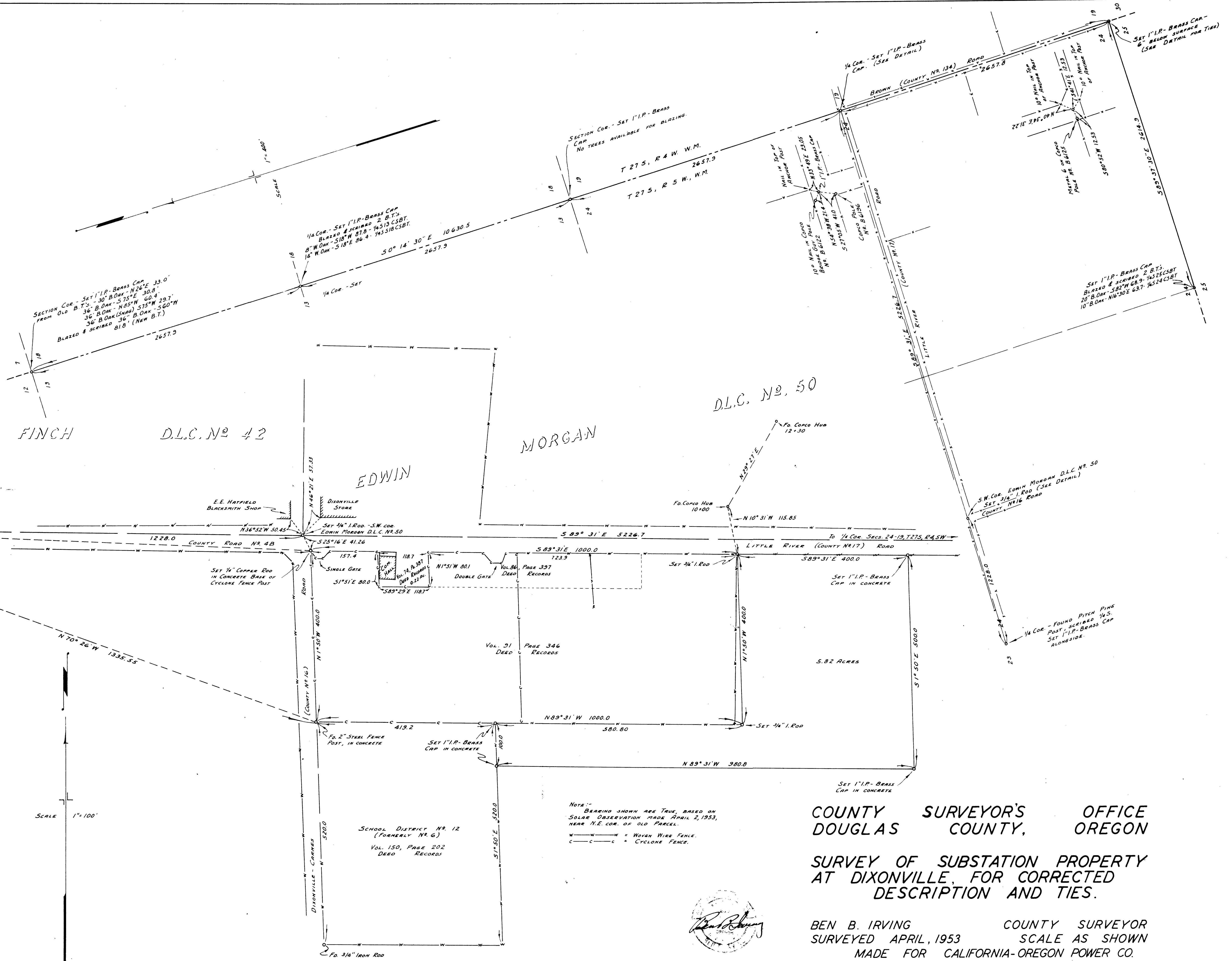


DETAIL OF MARKINGS ON BRASS CAP AS SET AT N.E. COR. OF SCHOOL PROPERTY; OTHER CAPS MARKED TO CORRESPOND TO CORNER THEY REPRESENT. BRASS CAP BRAZED TO 1"x3/8" IRON PIPE, SPLIT & SPREAD AT BOTTOM.



GEORGE

FINCH

D.L.C. No 42

MORGAN

EDWIN

D.L.C. No 50

COUNTY SURVEYOR'S OFFICE
DOUGLAS COUNTY, OREGON

SURVEY OF SUBSTATION PROPERTY
AT DIXONVILLE, FOR CORRECTED
DESCRIPTION AND TIES.

BEN B. IRVING COUNTY SURVEYOR
SURVEYED APRIL, 1953 SCALE AS SHOWN
MADE FOR CALIFORNIA-OREGON POWER CO.

NOTE: BEARING SHOWN ARE TRUE, BASED ON SOLAR OBSERVATION MADE APRIL 2, 1953, NEAR N.E. COR. OF OLD PARCEL.
W—W—W = WOVEN WIRE FENCE.
C—C—C = CYCLONE FENCE.



CS FILE FOLDER

CONTAINS

MORE

INFORMATION