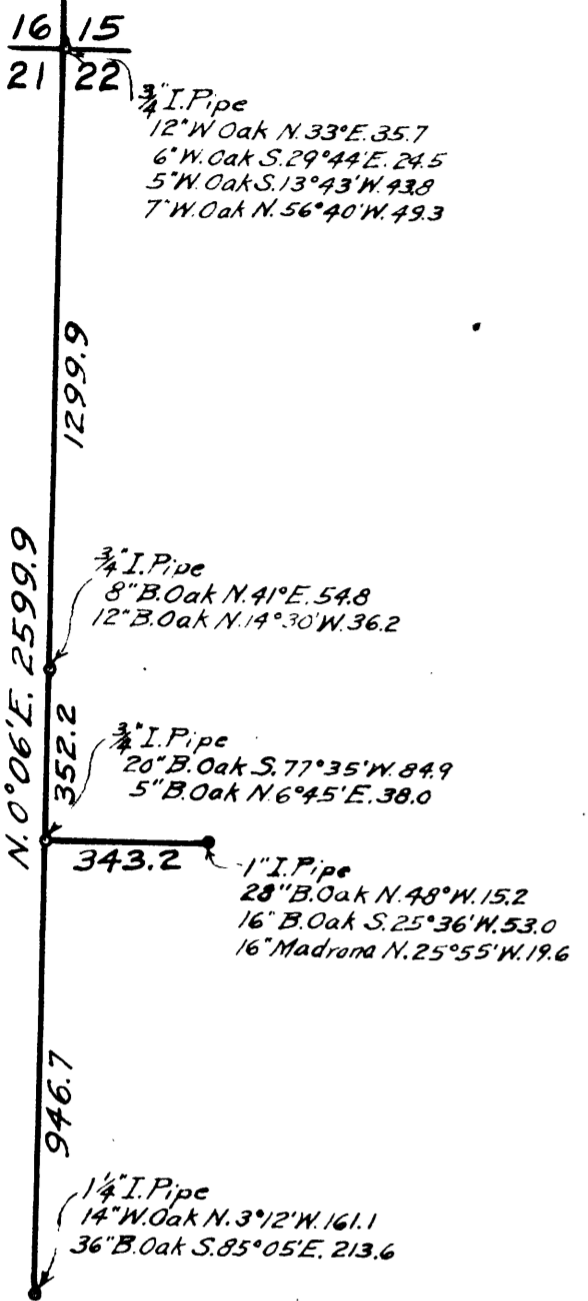


COUNTY SURVEYOR'S OFFICE
DOUGLAS COUNTY, OREGON.
Survey's in
SECTION 22, T. 30 S., R. 5 W., W.M.
Geo. J. Wenderoth - Deputy.

REGISTERED
OREGON
LAND SURVEYOR
Geo. J. Wenderoth
MAJOR 1911
Geo. J. Wenderoth
5



N.W. Cor. D.L.C. #52
4" Truck Spring
12" W. Oak S. 76° 16' E. 72.0
12" W. Oak S. 48° 39' E. 83.5

45137

30" Pine N. 80° W. 115.0
24" Fir S. 78° W. 115.0
30" Pine N. 63° 50' W. 52.8

22 23
27 26