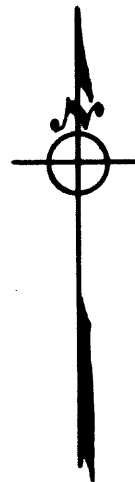
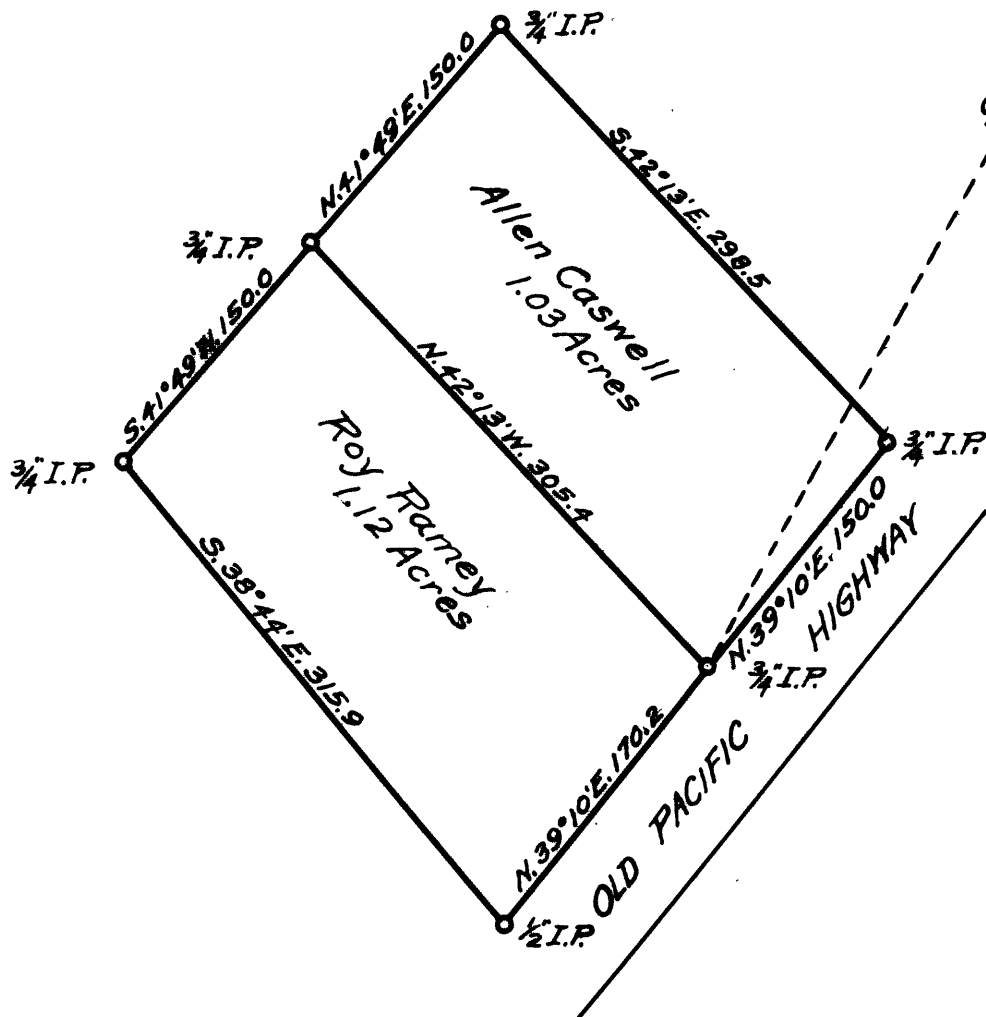


COUNTY SURVEYORS FILE DATA
DO NOT REMOVE FROM OFFICE

COUNTY SURVEYOR'S OFFICE
DOUGLAS COUNTY, OREGON.

SURVEY FOR
ALLEN CASWELL & ROY RAMEY
SECTION 14, T. 32 S., R. 5 W., W.M.
GEO. J. WENDEROTH, Deputy
Nov. 1952 Scale 1"=100ft.

QUARTER CORNER BET. 11 & 14
3/4" I.P.



REGISTERED
OREGON
LAND SURVEYOR

Geo. J. Wenderoth

MARCH 10, 1944
George J. Wenderoth
5