

SCALE 8" = 1 MILE

20

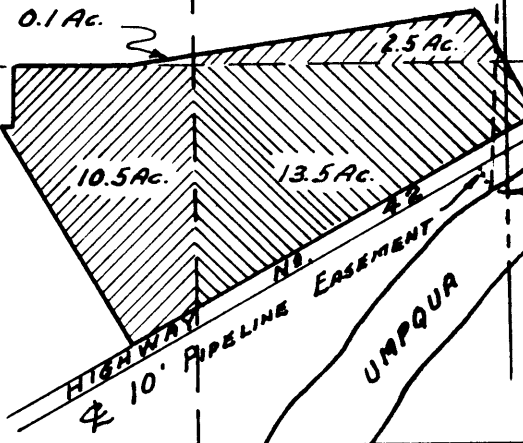
T28S R6W

JOHN COX D.L.C. 49

JOSEPH GAGE D.L.C. 51

JAMES BELIBU D.L.C. 52

N3°31'E 1065.3



WATER RIGHT
FOR
DOUGLAS HIGH SCHOOL,
SCHOOL DIST. #116
SECTION 20, T28S R6W.
OFFICE OF
FRED M. DARBY
COUNTY SURVEYOR, DOUGLAS COUNTY
ROSEBURG, OREGON

CS FILE FOLDER

CONTAINS

MORE

INFORMATION