

S.W. Cor. Wm Weaver
D.L.C. # 39, T.305
R.5W W.M.

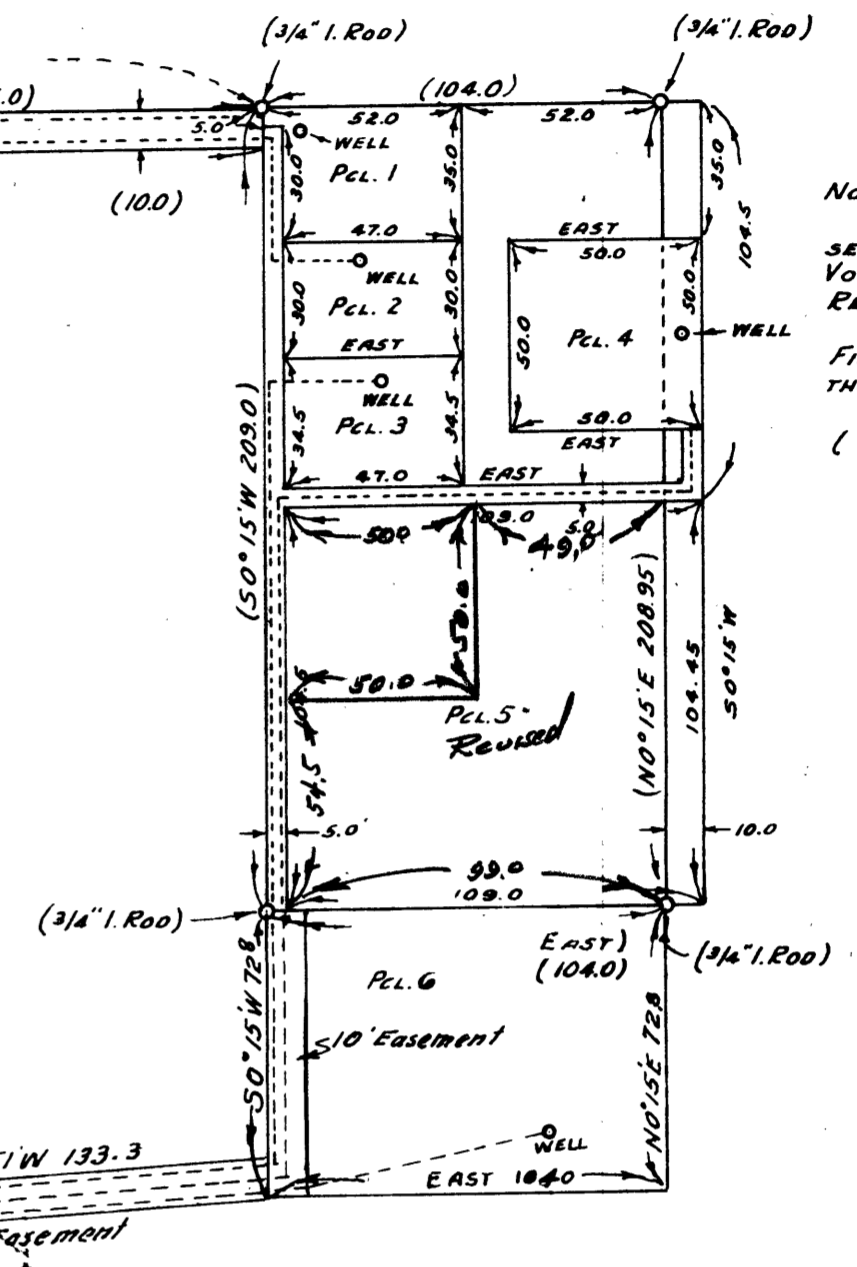
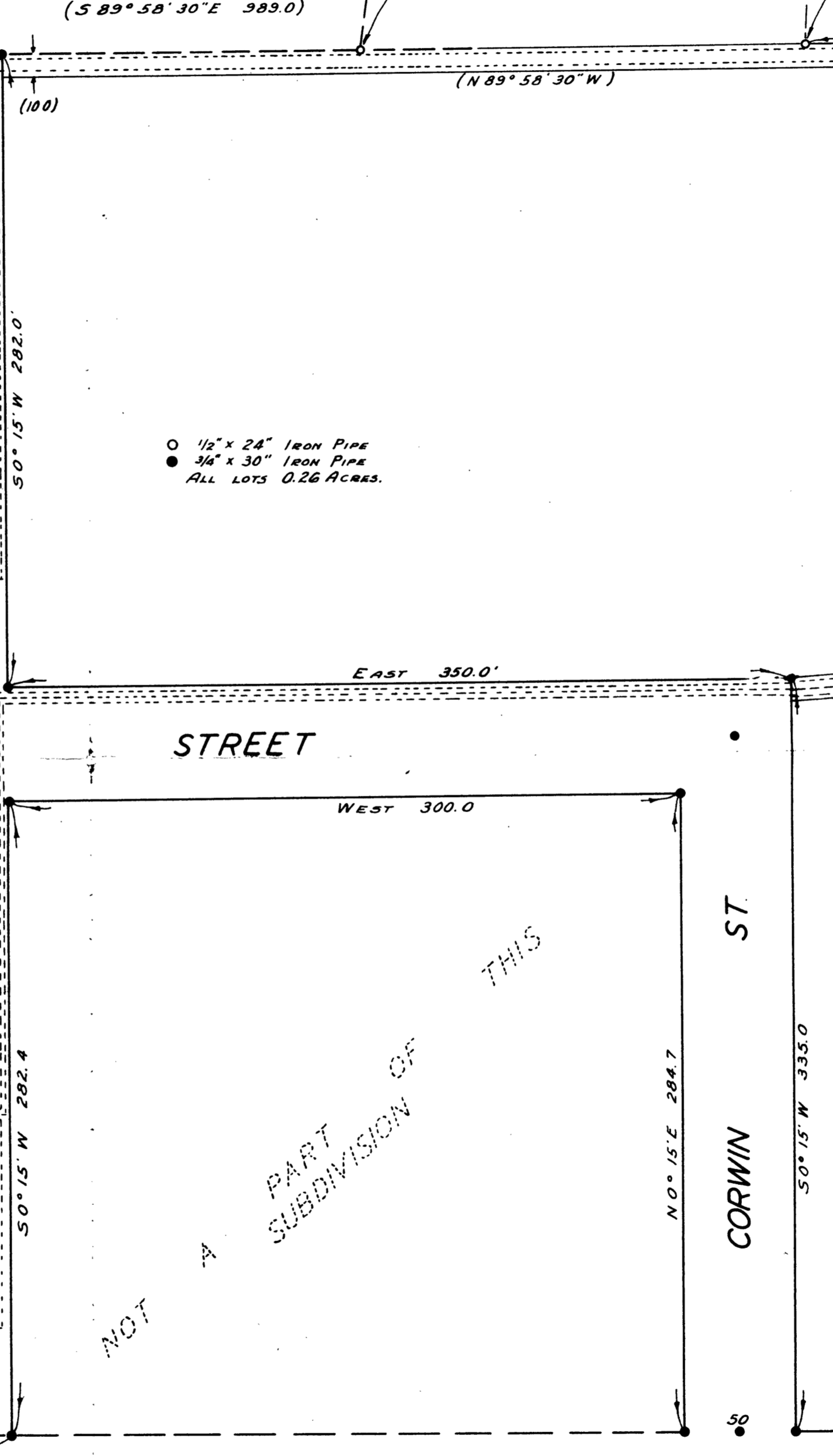
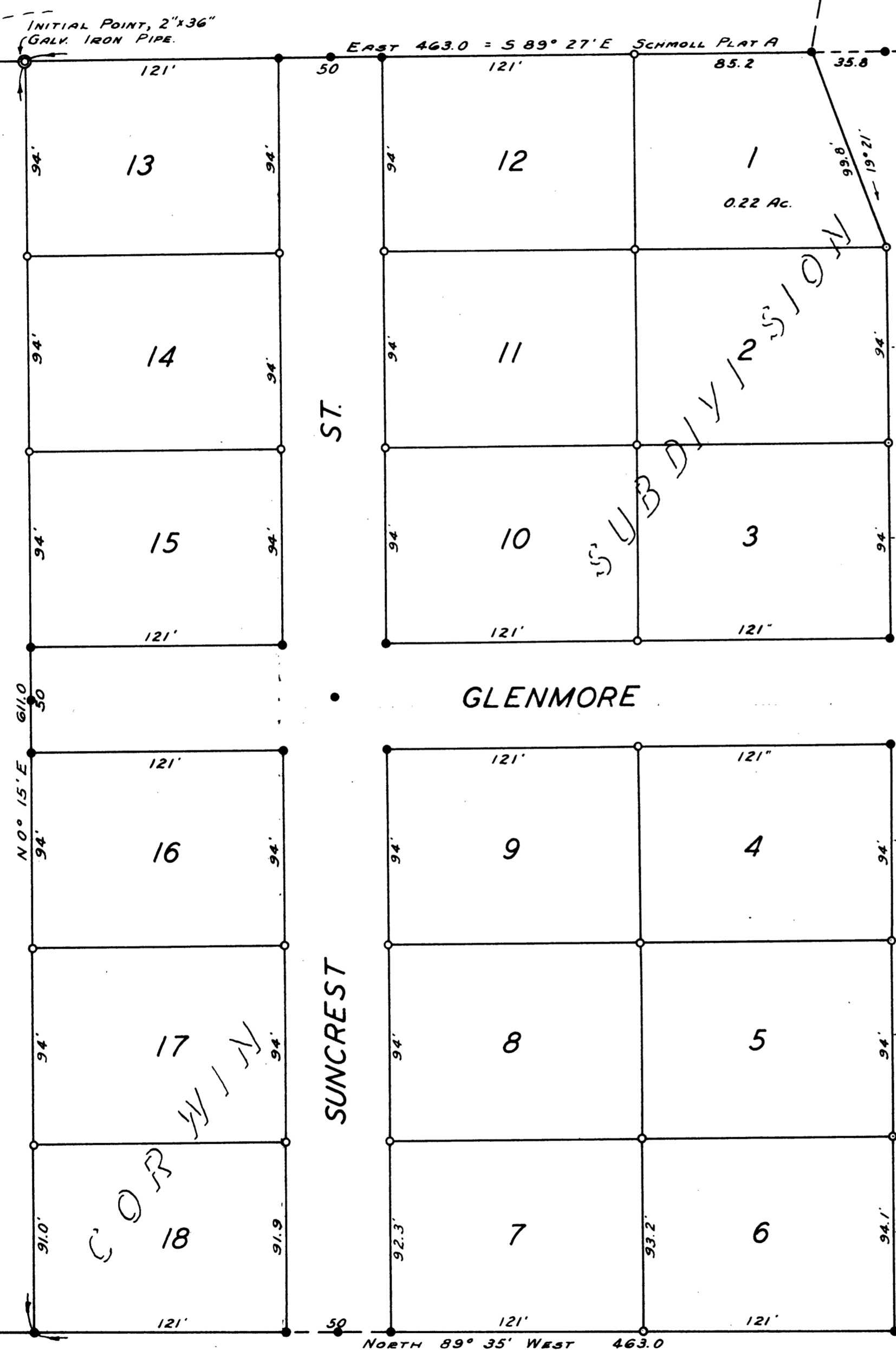
SCHMOLL

PLAT

12

26

A



NOTE:-
FOR PERTINENT DATA
SEE VOL. 213, PAGE 348, AND
VOL. 216, PAGE 439 OF DEED
RECORDS OF DOUGLAS COUNTY, ORE.
SEE ALSO COUNTY SURVEYOR'S
FILE 45/94 FOR DATA SHOWN
THUS; (105.0)
DATA SHOWN OUTSIDE OF
() NOT SURVEYED BY THIS OFFICE

○ 1/2" x 24" IRON PIPE
● 3/4" x 30" IRON PIPE
ALL LOTS 0.26 ACRES.

STATE OF OREGON) SS
COUNTY OF DOUGLAS)
I, CHAS DOERNER, COUNTY CLERK OF DOUGLAS
COUNTY, OREGON, DO HEREBY CERTIFY THAT ALL DATA
SHOWN HEREON PERTINENT TO CORWIN SUBDIVISION
HAS BEEN BY ME COMPARED WITH THE ORIGINAL THERE-
OF, THAT IT IS A TRUE AND CORRECT COPY THEREFROM,
AS THE SAME APPEARS ON FILE IN MY OFFICE AND
CUSTODY.
WITNESS MY HAND AND OFFICIAL SEAL THIS
2nd DAY OF April, 1953.

Chas Doerner
COUNTY CLERK

Ben B. Irving

COUNTY SURVEYOR'S OFFICE
DOUGLAS COUNTY, OREGON

WATER SUPPLY AREA FOR
LOTS IN CORWIN SUBD'V'N

BEN B. IRVING COUNTY SURVEYOR
DRAWN APRIL 2, 1953 SCALE 1"=50'

G.S. File No. 45/94

Do NOT SELL THIS COPY

Do NOT SELL M 8