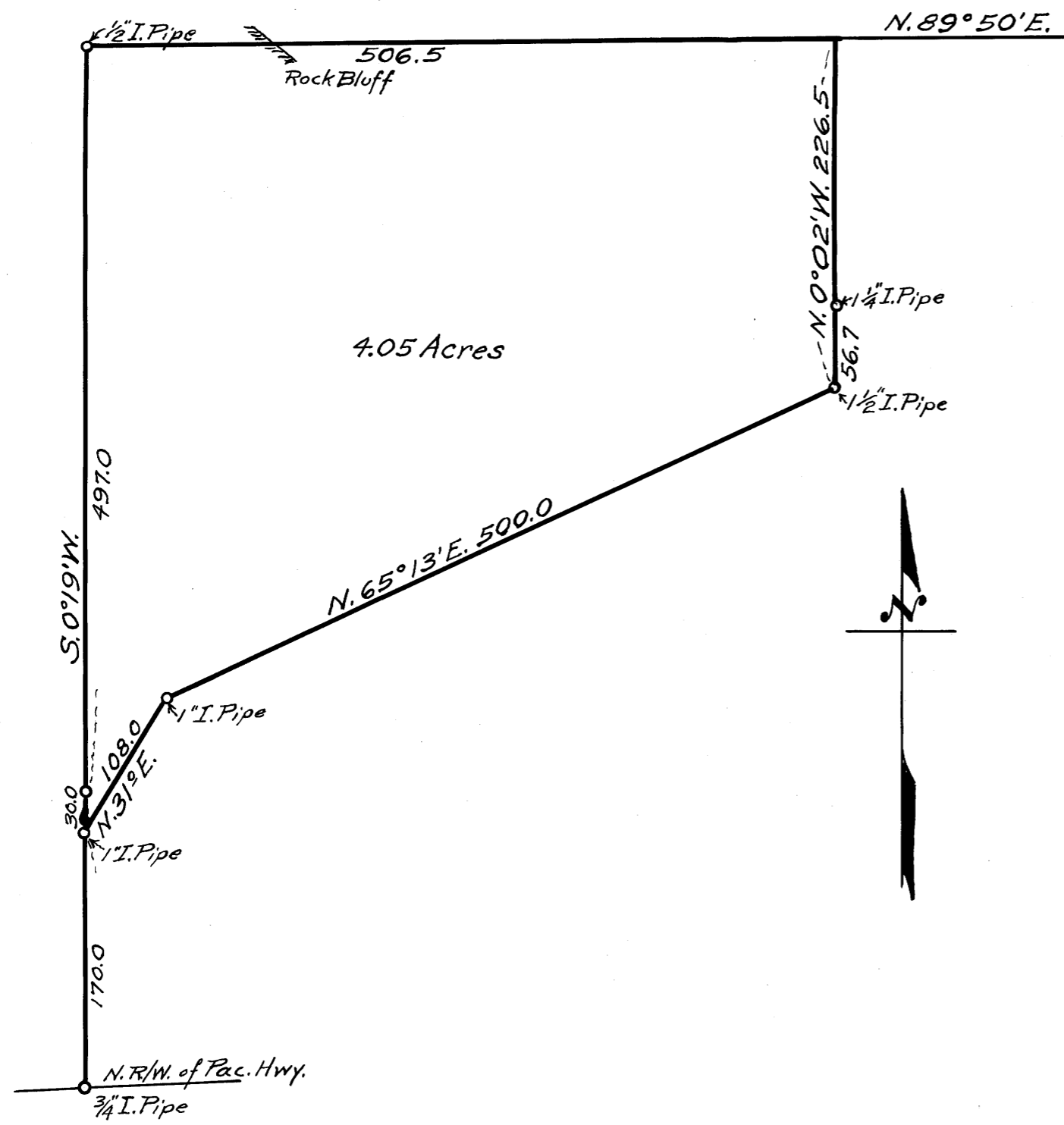


19 20  
30 29



COUNTY SURVEYORS FILE DATA  
DO NOT REMOVE FROM OFFICE

**COUNTY SURVEYOR'S OFFICE  
DOUGLAS COUNTY, OREGON.**

Survey for  
A. Fisher, in  
Section 30, T. 32 S., R. 5 W., W.M.  
Geo. J. Wenderoth, deputy surveyor.  
August 1952 Scale 1" = 100 feet.

REGISTERED  
OREGON  
LAND SURVEYOR

*Geo. J. Wenderoth*

MARCH 10, 1944  
George J. Wenderoth  
5

45-92

45/92