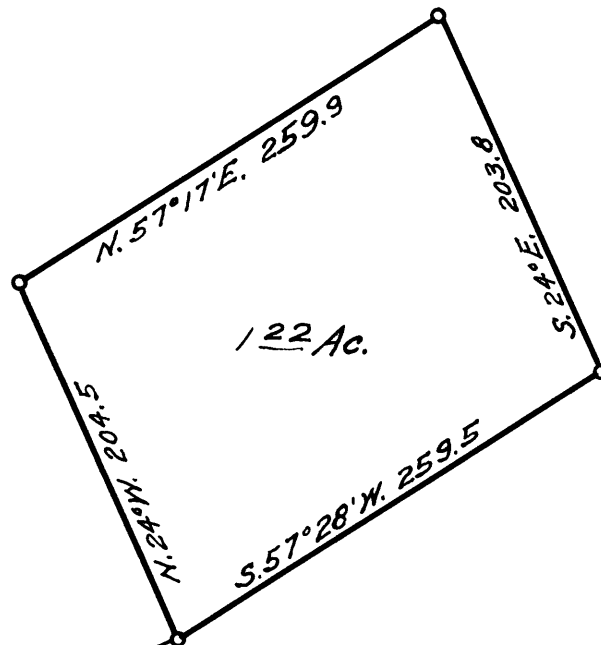
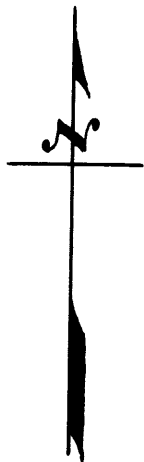


REGISTERED
OREGON
LAND SURVEYOR

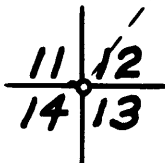
Geo. J. Wenderoth

MARCH 10, 1944
George J. Wenderoth
5



N. 65° E.
1889.2

N. 37° 15' E.
1025.8



**COUNTY SURVEYOR'S OFFICE
DOUGLAS COUNTY, OREGON
SURVEY FOR
CLAY ULAM**

SECTION 12, T. 29 S., R. 6 W., W.M.
Geo. J. Wenderoth, Deputy. June 1952
Scale 1" = 100ft.

**COUNTY SURVEYORS FILE DATA
DO NOT REMOVE FROM OFFICE**