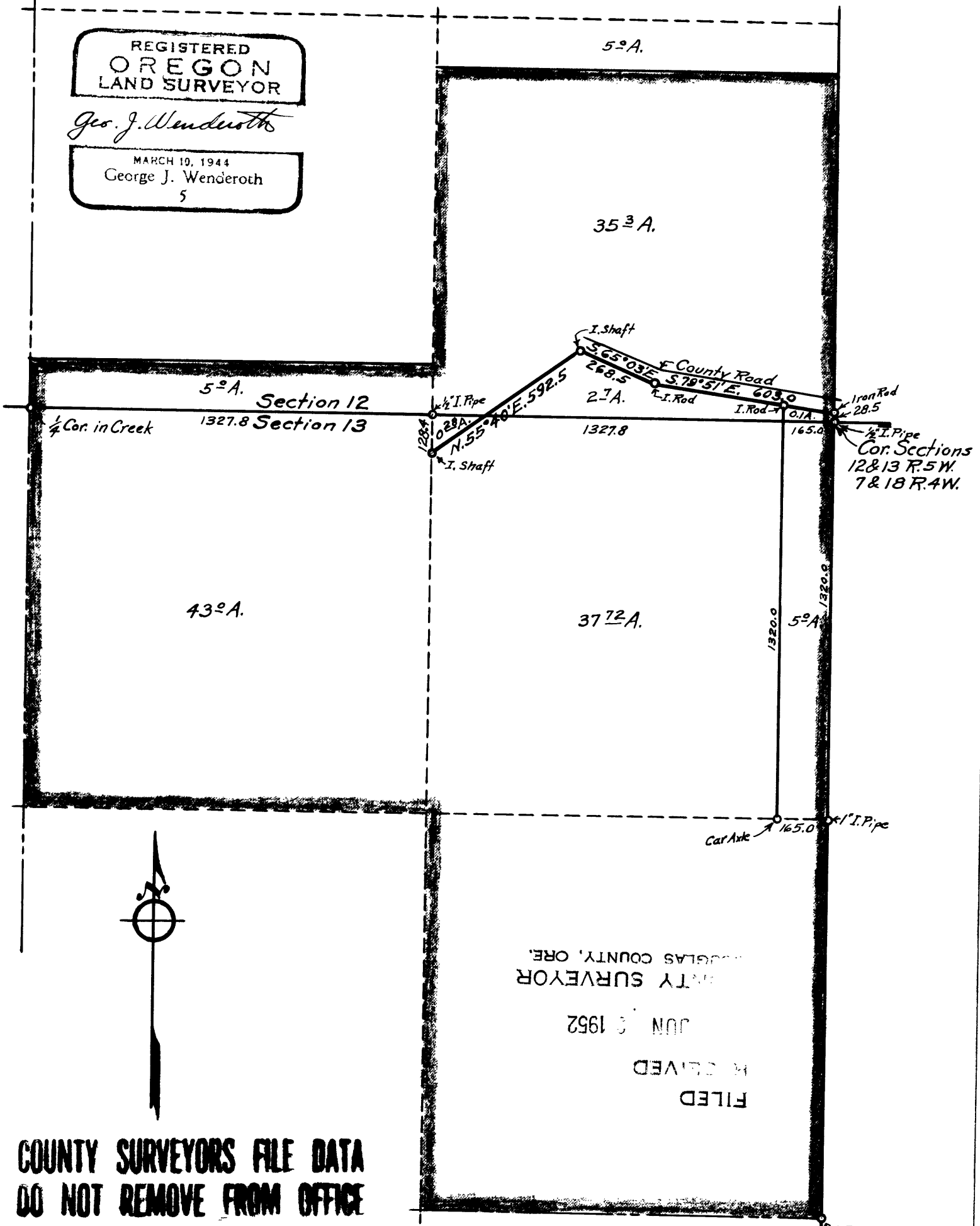


REGISTERED
OREGON
LAND SURVEYOR

Geo. J. Wenderoth

MARCH 10, 1944
George J. Wenderoth
5



FILED
RECEIVED
JUN 5 1952
COUNTY SURVEYOR
DOUGLAS COUNTY, ORE.

**COUNTY SURVEYORS FILE DATA
DO NOT REMOVE FROM OFFICE**

**COUNTY SURVEYOR'S OFFICE
DOUGLAS COUNTY, OREGON.
SURVEY OF
JAMES A. BOOTH ESTATE
SECTIONS 12 & 13 T. 32 S., R. 5 W. W.M.
Geo. J. Wenderoth, Deputy
June 5, 1952**

Scale 1" = 400ft.

45/74
C. S. 45/74