

M 7-42

PAGE 428

NOTE :-
 BEARINGS SHOWN ARE BASED ON THE BEARING OF SOUTH AS NOTED, PER SURVEY OF H.L. EPPSTEIN, CO. SURVEYOR, DATED MAY 26, 1938, FILED IN C.S. FILE V15, E8A. THIS WAS THE ORIGINAL SURVEY OF PARCEL IN QUESTION
 BEARINGS SHOWN THUS (EAST 80.0) ARE FROM PLAT OF MULHOLLAND MEADOWS AS FILED IN COUNTY CLERK'S OFFICE.

VOL. 99 DEED RECORDS

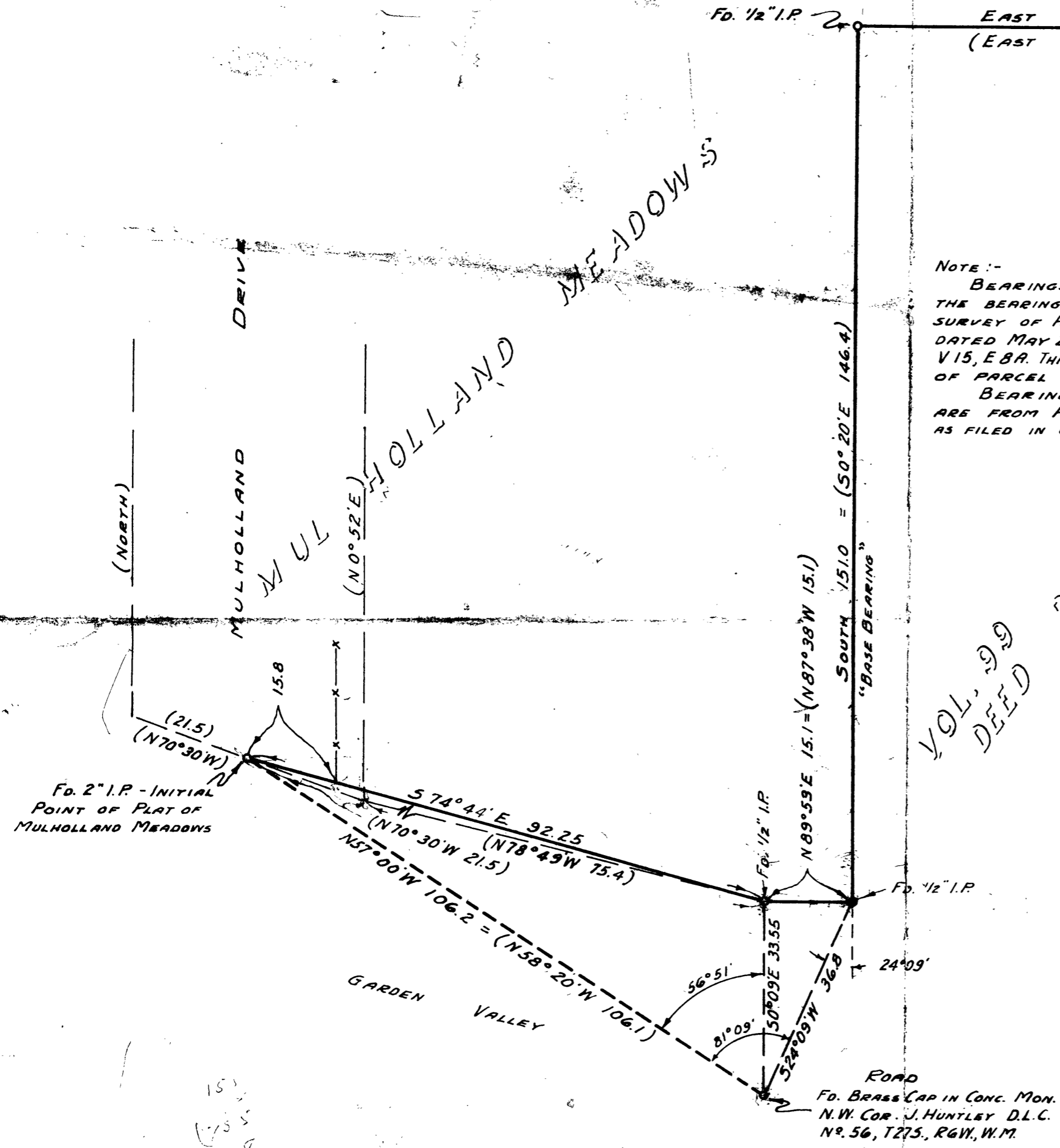


COUNTY SURVEYOR'S OFFICE
 DOUGLAS COUNTY OREGON

SURVEY TO CHECK LOCATION
 OF PROPERTY CORNERS.

BEN. B. IRVING COUNTY SURVEYOR
 SURVEYED SEPT. 28, 1951 BY
 N.E. RICHARDSON DEPUTY

SCALE 1"=20'



13507
1317
337

151
155
378

45/32

CS FILE FOLDER

CONTAINS

MORE

INFORMATION