

N.W. Cor. of S.E. 1/4 of N.W. 1/4
 38° W. Oak N. 72° 23' E. 69.2
 16° W. Oak S. 81° 05' E. 178.8
 16° W. Oak N. 66° 37' W. 190.6
 3/4" I. Drill.

West 251.0

1.08 Ac.

HIGHWAY
 NO. 227

5.00 Ac.

COUNTY SURVEYOR'S OFFICE
 DOUGLAS COUNTY, OREGON.

Survey for
 Delbert Poole in
 Section 22, T. 30 S., R. 4 W., W.M.
 Geo. J. Wenderoth, deputy
 Feb. 13, 1952.

Scale 1" = 100ft.

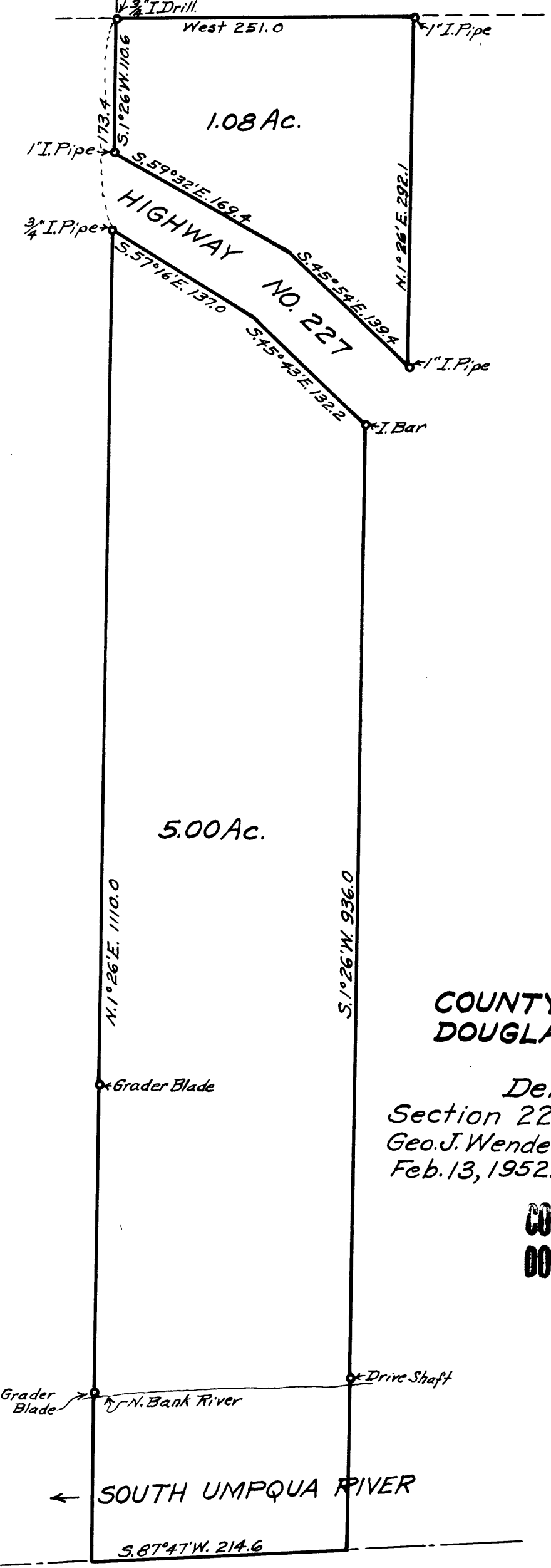
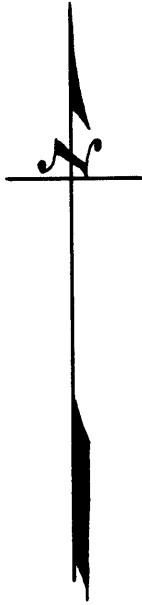
COUNTY SURVEYOR'S FILE DATA
 DO NOT REMOVE FROM OFFICE

REGISTERED
 OREGON
 LAND SURVEYOR

Geo. J. Wenderoth

1944
 George J. Wenderoth

P 45/14



Grader Blade

← SOUTH UMPQUA RIVER

S. 87° 47' W. 214.6

Grader Blade N. Bank River Drive Shaft

Grader Blade

N. 1° 26' E. 1110.0

S. 1° 26' W. 936.0

I. Bar

1" I. Pipe

N. 1° 26' E. 292.1

S. 45° 54' E. 139.4

S. 75° 43' E. 132.2

S. 57° 16' E. 137.0

S. 59° 32' E. 169.4

S. 1° 26' W. 110.6

1" I. Pipe

1" I. Pipe

3/4" I. Drill