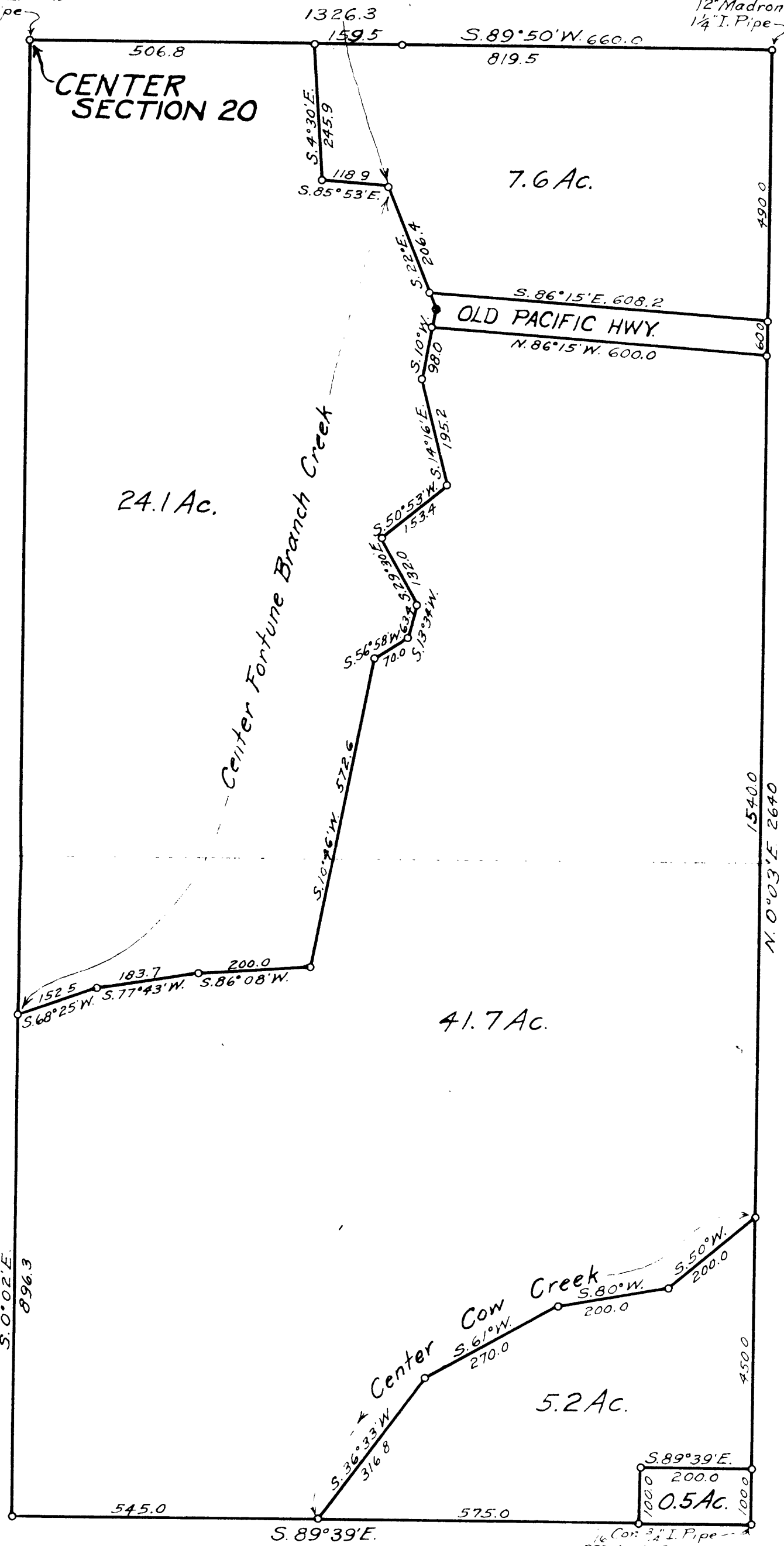


36" Fir S. 21° 56' E. 123.5
12" Fir S. 79° 22' E. 146.9
1/2" I. Pipe

16" Fir N. 5° 05' E. 30.3
12" Madrone S. 67° 48' E. 47.8
1/4" I. Pipe



1/4 Cor. 3/4" I. Pipe
32" Maple S. 87° 54' W. 34.8
16" Maple N. 22° 35' W. 39.6

COUNTY SURVEYOR'S OFFICE
DOUGLAS COUNTY, OREGON
Survey for
I. Booth, Section 20, T. 32 S., R. 5 W. W. M.
Geo. J. Wenderoth, Surveyor Nov. 18, 1948
Scale 1" = 200 ft.

Geo. J. Wenderoth

451