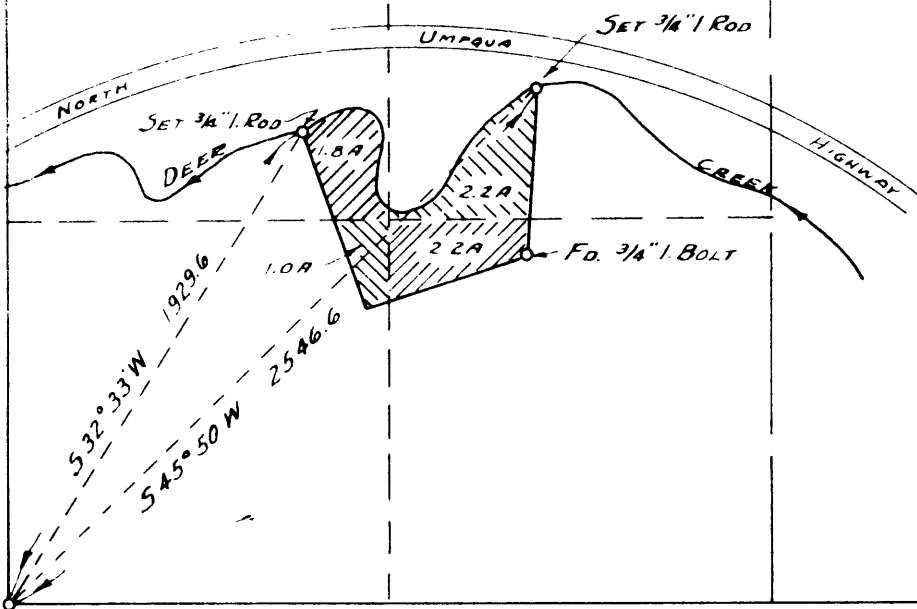


SCALE 8"=1 MILE

15  
T27S R5W



WATER RIGHT  
FOR  
LYNN BECKLEY  
SECTION 15, T27S., R 5 W., W.M.

OFFICE OF  
BEN. B. IRVING  
COUNTY SURVEYOR, DOUGLAS COUNTY.  
ROSEBURG, OREGON.

CS FILE FOLDER

CONTAINS

MORE

INFORMATION