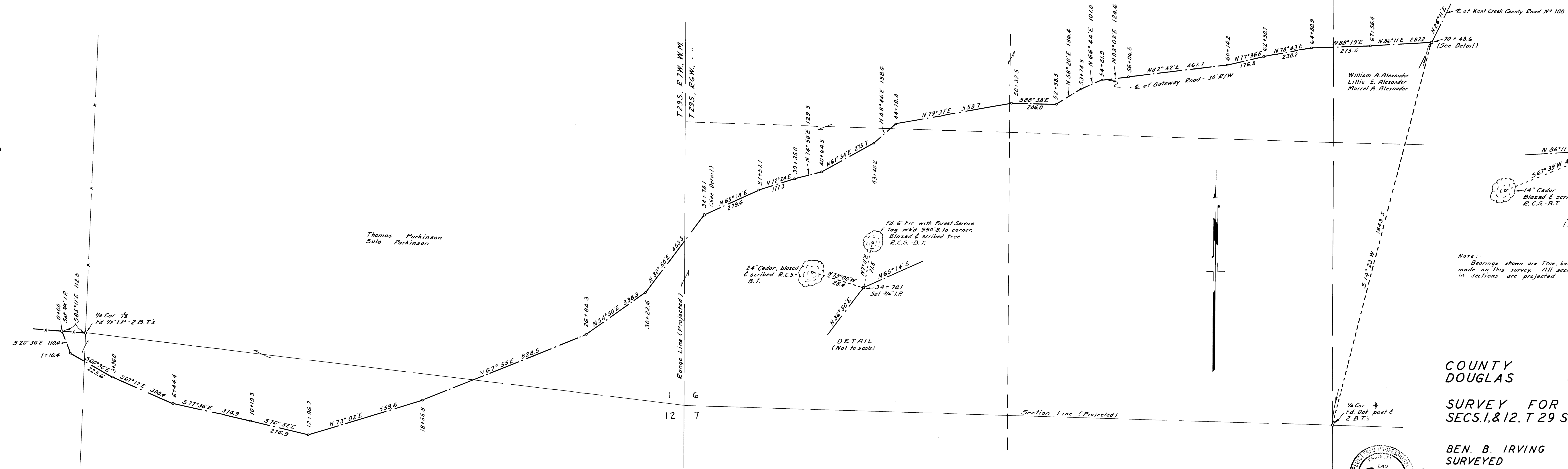


Charles C. Vaytilla

Thomas Parkinson
Sula Parkinson

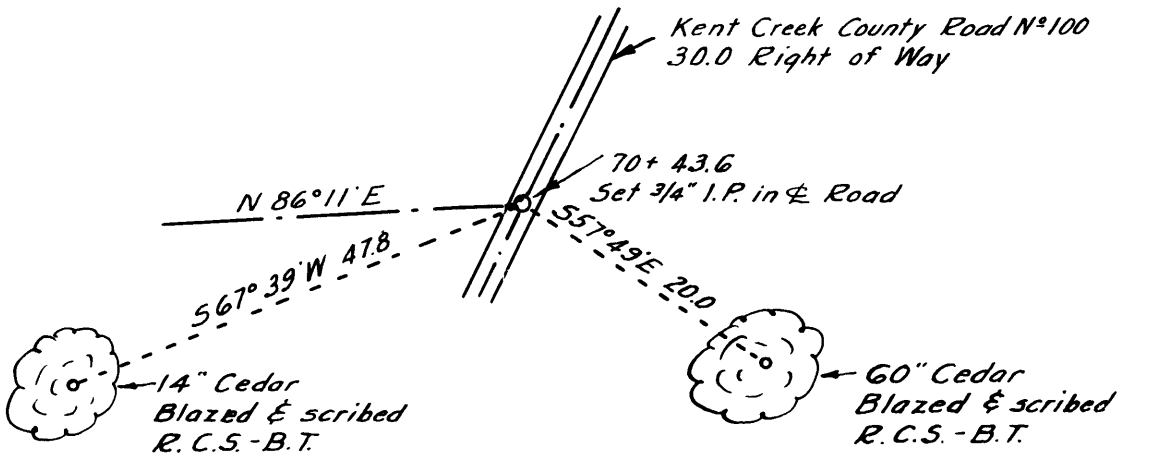
William A. Alexander
Lillie E. Alexander
Murrel A. Alexander



Fd. 6" Fir with Forest Service tag m'kd 390.3 to corner. Blazed & scribed tree R.C.S.-B.T.

24" Cedar, blazed & scribed R.C.S.-B.T.

DETAIL (Not to scale)



DETAIL (Not to scale)

Note:-- Bearings shown are True, based on Solar Observation made on this survey. All section, and subdivisional lines in sections are projected.

COUNTY SURVEYOR'S OFFICE
DOUGLAS COUNTY, OREGON

SURVEY FOR GATEWAY ROAD, IN SECS. 1 & 12, T 29 S., R 7 W., & SEC. 6, T 29 S., R 6 W.

BEN. B. IRVING
SURVEYED

COUNTY SURVEYOR
MAY 18, 1950

SCALE 1" = 200'

COUNTY SURVEYORS FILE DATA
DO NOT REMOVE FROM OFFICE

