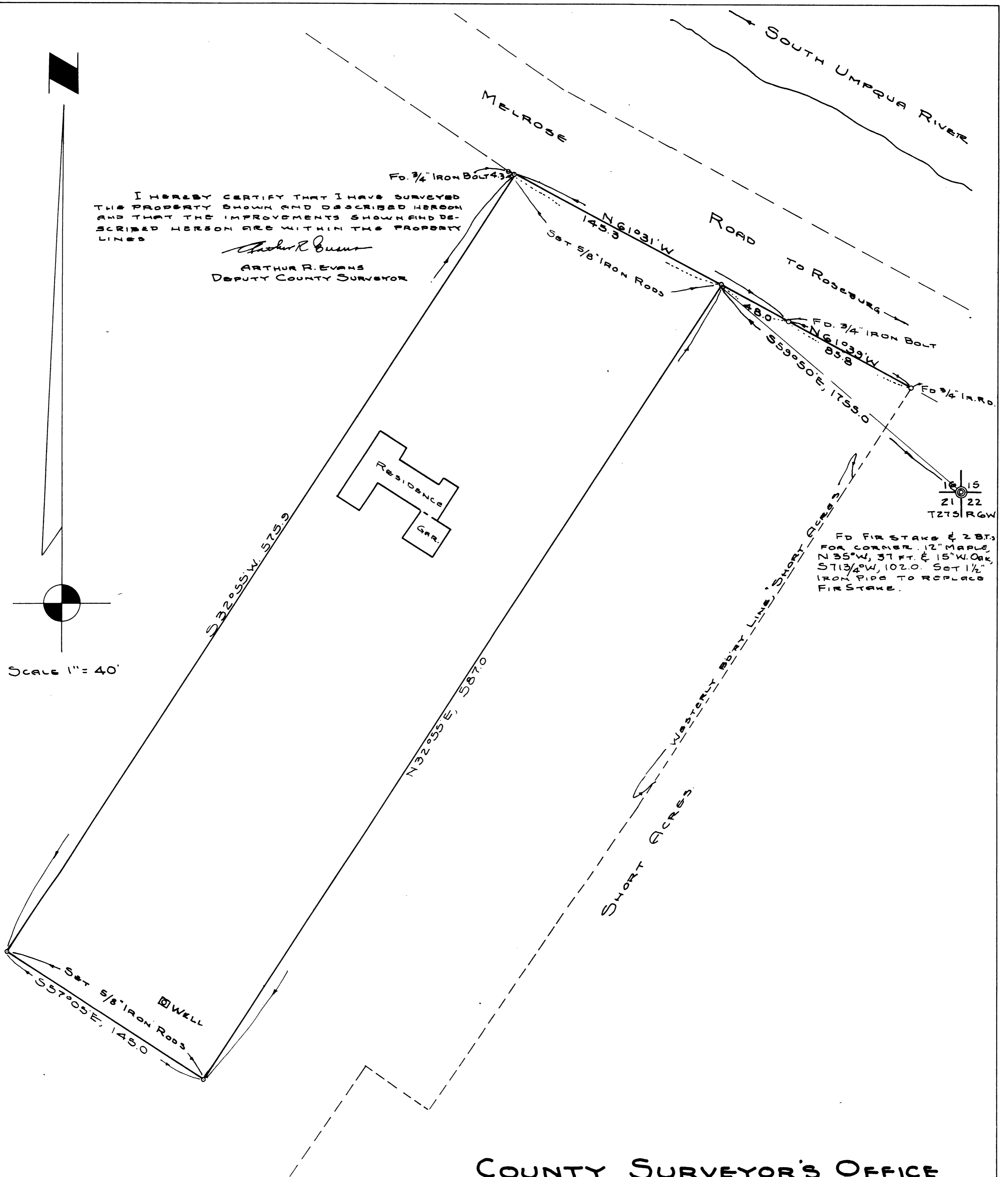


I HEREBY CERTIFY THAT I HAVE SURVEYED THE PROPERTY SHOWN AND DESCRIBED HEREON AND THAT THE IMPROVEMENTS SHOWN AND DESCRIBED HEREON ARE WITHIN THE PROPERTY LINES.

Arthur R. Evans
 ARTHUR R. EVANS
 DEPUTY COUNTY SURVEYOR

Scale 1" = 40'



COUNTY SURVEYOR'S OFFICE
 DOUGLAS COUNTY OREGON
 SURVEY SHOWING LOCATION OF
 IMPROVEMENTS ON & BOUNDARIES
 OF M. & B. PARCEL IN SECTION 16
 TWP. 27 So., RGE. 6 WEST, W.M.

BEN B. IRVING, REG. PROF. ENGR. CO. SURVEYOR
 SURVEYED & PLATTED, JUNE, 1951. BY
 A.R. EVANS, REG. PROF. ENGR. DEP. CO. SURVEYOR