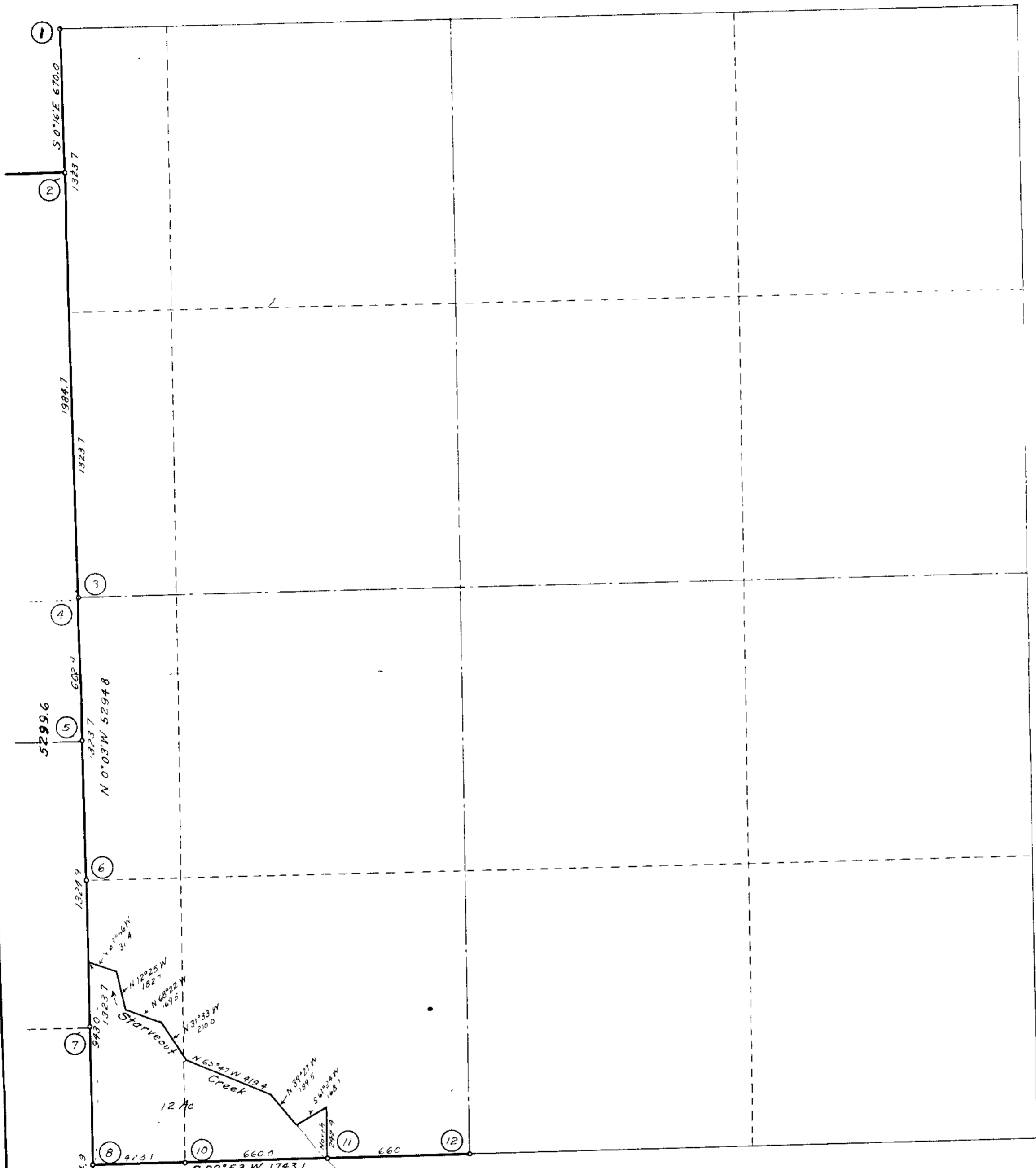


SECTION 17
T. 32 S., R. 4 W. W.M.



- | | |
|---|---|
| <p>① C.C. Sec 8-11 1" I. Pipe
30' Fir N 75° 40' E 36.0 ft
30' Fir S 35° 09' E 29.0 ft</p> <p>② C.C. Sec 7-18 1" I. Pipe
4' Live Oak N 9° 30' W 38.1 ft
4' Live Oak S 15° 57' W 59.2 ft</p> <p>③ 1/4 Cor. Sec 17 1" I. Pipe
8' Chinquapin S 43° 52' E 12.3 ft
30' Fir N 39° 00' E 12.4 ft</p> <p>④ Prop. Cor. 3/4" I. Pipe
7' Madrona N 29° 50' W 15.9 ft
4' Chinquapin S 47° 20' W 4.0 ft</p> <p>⑤ 1/4 Cor. Sec. 18 1" I. Pipe
20' Fir S 16° 29' W 41.5 ft
30' Fir N 46° 05' W 35.8 ft</p> <p>⑥ 1/4 Cor. Sec 17 1" I. Pipe
12' Fir N 32° 10' E 130.0 ft
14' Apple S 82° 06' E 332.4 ft</p> <p>⑦ Cor. Sec 18 3/4" I. Pipe
6' Alder N 43° 28' W 41.8 ft
12' Chinquapin S 45° 13' W 61.9 ft</p> <p>⑧ C.C. Sec 17-20 3/4" I. Pipe
5' Chinquapin N 87° 25' E 53.5 ft
8' Chinquapin S 21° 47' E 78.8 ft</p> | <p>⑨ C.C. Sec. 18-20 1/2" I. Pipe
5' Chinquapin S 65° 45' E 37.8 ft
20' Fir S 59° 26' W 8.6 ft</p> <p>⑩ 3/4" I. Pipe
1/4 18' Cedar N 1° 38' E 17.8 ft
16' Cedar S 82° 51' E 24.4 ft</p> <p>⑪ Prop. Cor. 3/4" I. Pipe in Creek
4' Cedar N 13° W 30.3 ft
4' Cedar N 75° 43' E 70.7 ft</p> <p>⑫ 1/4 Cor. Sec 17-20 3/4" I. Pipe
28' Madrona N 79° 47' W 13.3 ft
10' Fir S 4° 08' E 47.8 ft</p> |
|---|---|

COUNTY SURVEYORS OFFICE
DOUGLAS COUNTY, OREGON
Survey of Lands in Section 17
T. 32 S., R. 4 W. W.M.
Scale 1" = 400ft

Geo. J. Wendt