

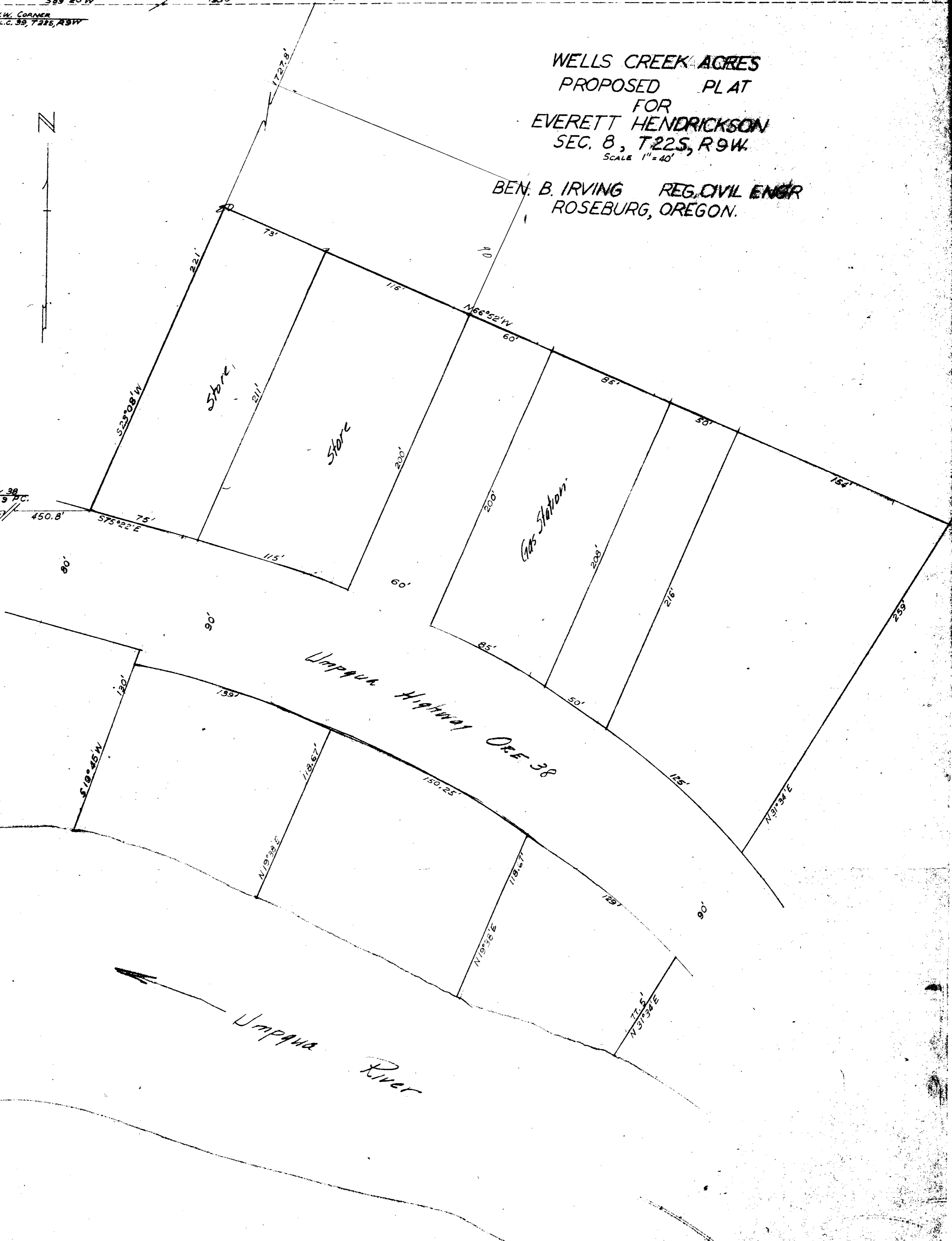
589°20'W
1850'
N.W. CORNER
D.L.C. 39, T22S, R9W

WELLS CREEK ACRES
PROPOSED PLAT
FOR
EVERETT HENDRICKSON
SEC. 8, T22S, R9W
SCALE 1" = 40'

BEN. B. IRVING REG. CIVIL ENGR
ROSEBURG, OREGON.



UMPUGA HWY 38
C Sta. 143+20.9 P.C.
588°51'W 450.8'



518
44
102