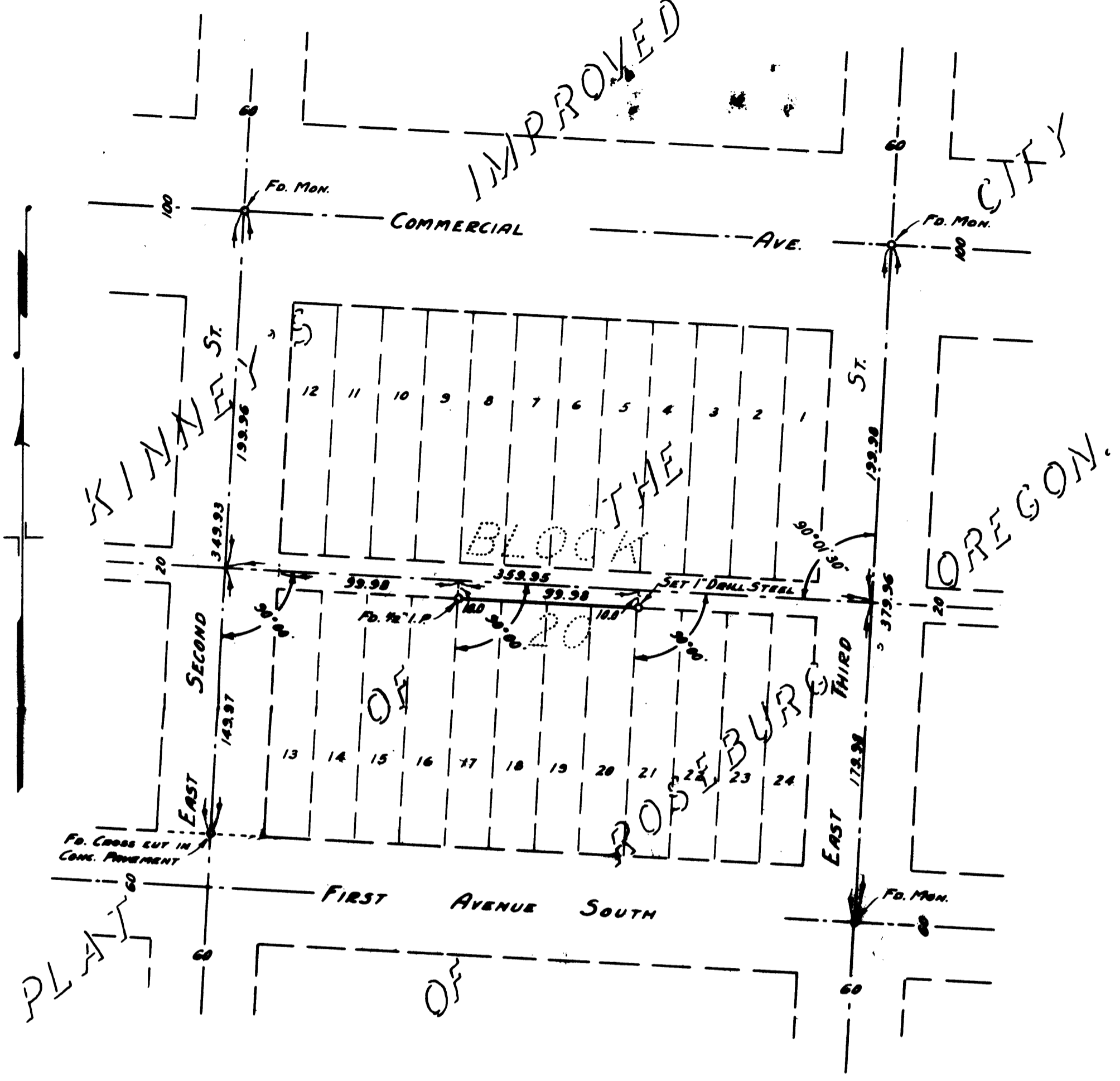


IMPROVED

CTRY



COUNTY SURVEYORS FILE DATA
NOT REMOVE FROM OFFICE

COUNTY SURVEYOR'S OFFICE
DOUGLAS COUNTY, OREGON

SURVEY TO ESTABLISH LOT CORNERS ON ALLEY LINE.

REGISTERED
OREGON
LAND SURVEYOR

N.E. Richardson
JULY 7, 1944
N. E. RICHARDSON
35

BEN. B. IRVING
SURVEYED JAN. 8, 1951
N. E. RICHARDSON

COUNTY SURVEYOR
BY
DEPUTY

SCALE 1" = 60'