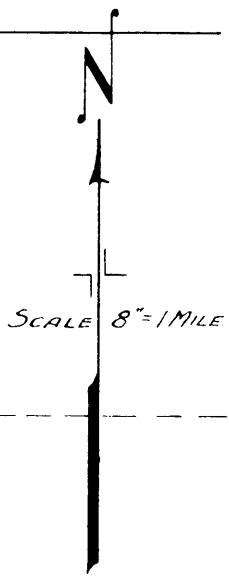
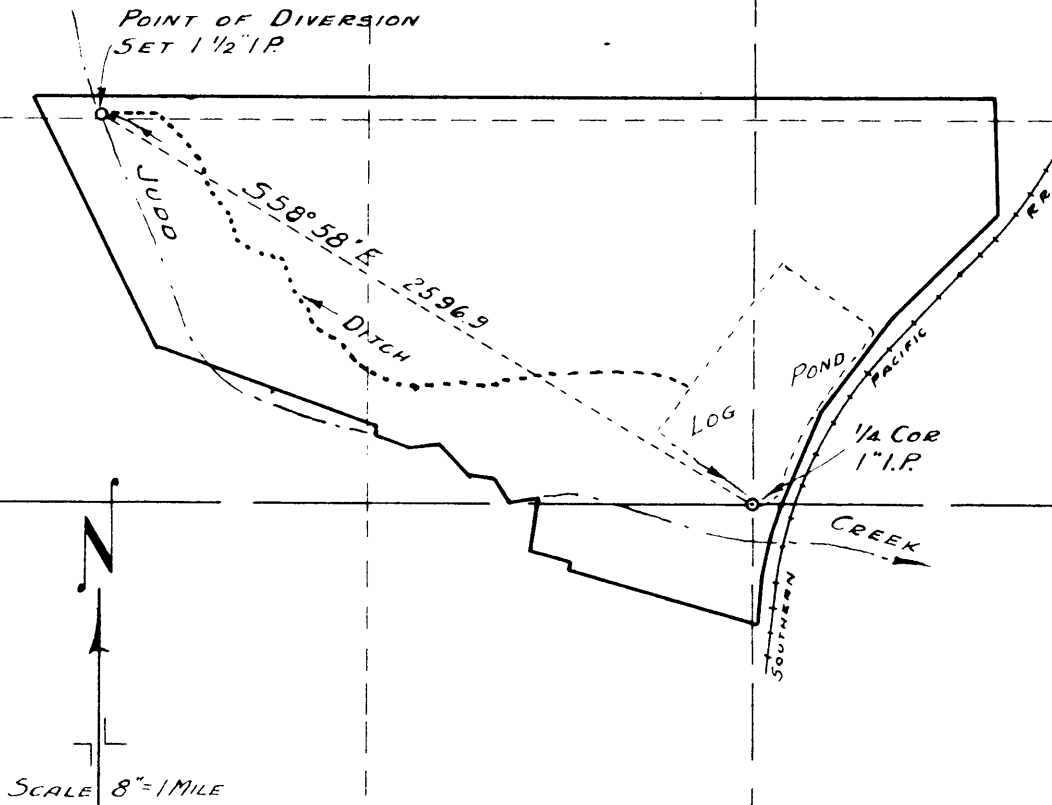


12



I, BEN. B. IRVING, of ROSEBURG, OREGON, DO HEREBY CERTIFY THAT THIS MAP WAS MADE FROM NOTES TAKEN DURING AN ACTUAL SURVEY MADE UNDER MY IMMEDIATE SUPERVISION ON JAN. 26-30, 1951; THAT THE MONUMENT SHOWN ON THIS MAP CONSISTING OF A 1 1/2" I.P. IS N 58° 58' W 2596.9 FT. FROM A 1" I.P. AT THE 1/4 CORNER TO SECTIONS 12, 13, T30S, R6W, W.M

Ben B Irving
REG. PROFESSIONAL ENGINEER

13

WATER RIGHT
FOR
RUFUS CORDER
SECTION 12, 13, T30S., R 6 W., W.M.

Ben B Irving

OFFICE OF
BEN. B. IRVING
COUNTY SURVEYOR, DOUGLAS COUNTY,
ROSEBURG, OREGON.

C. S. File No. 44/97-3