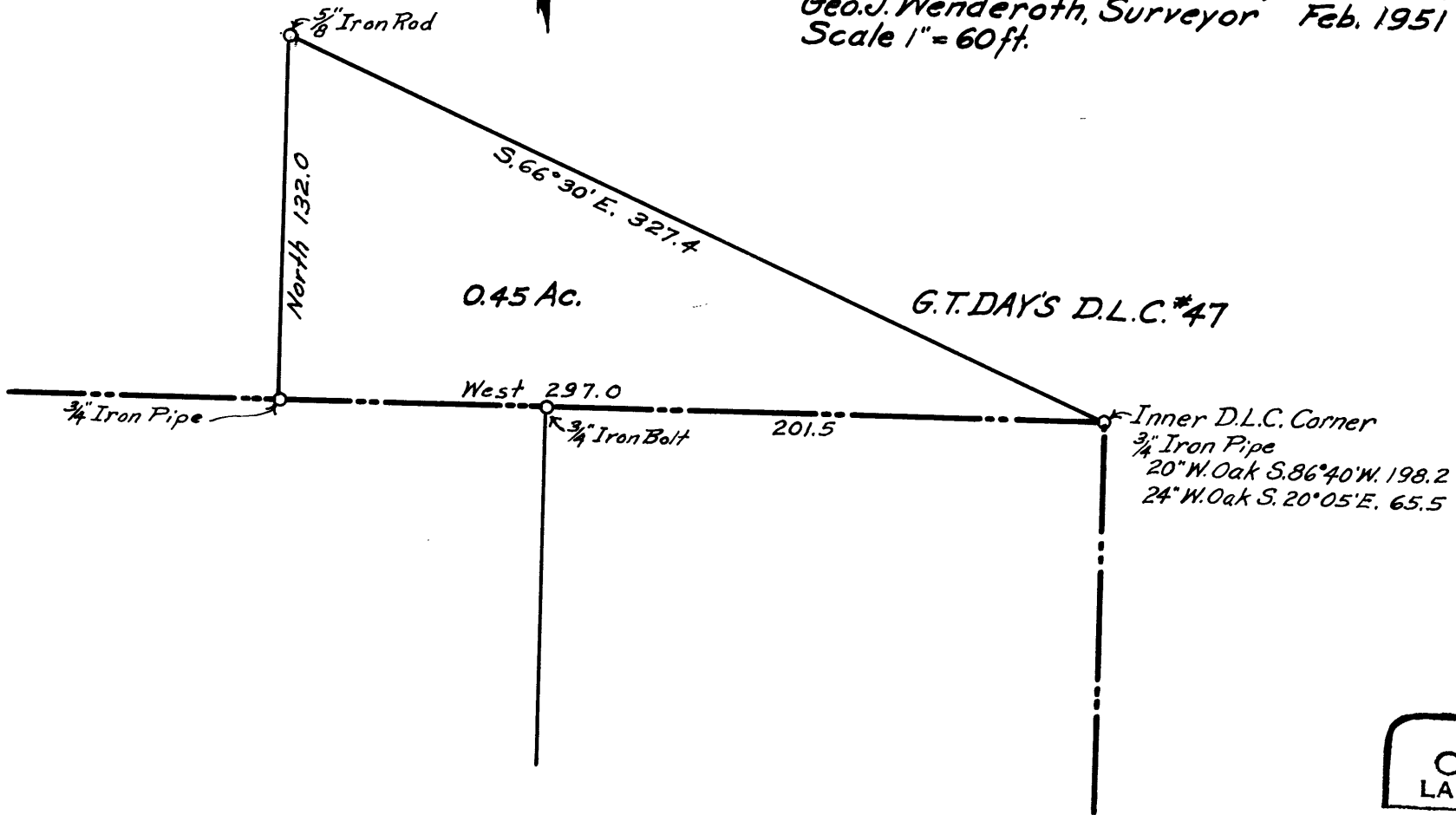
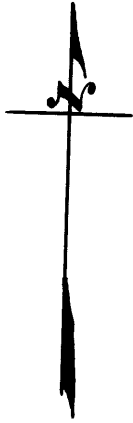


COUNTY SURVEYORS FILE DATA
DO NOT REMOVE FROM OFFICE

COUNTY SURVEYOR'S OFFICE
DOUGLAS COUNTY, OREGON.
SURVEY FOR
DAY'S CREEK CHURCH
SECTIONS 9 & 10 T. 30 S., R. 4 W. W.M.
Geo. J. Wenderoth, Surveyor Feb. 1951
Scale 1" = 60 ft.



REGISTERED
OREGON
LAND SURVEYOR

Geo. J. Wenderoth

MARCH 10, 1944
George J. Wenderoth
5

CS 44/89