

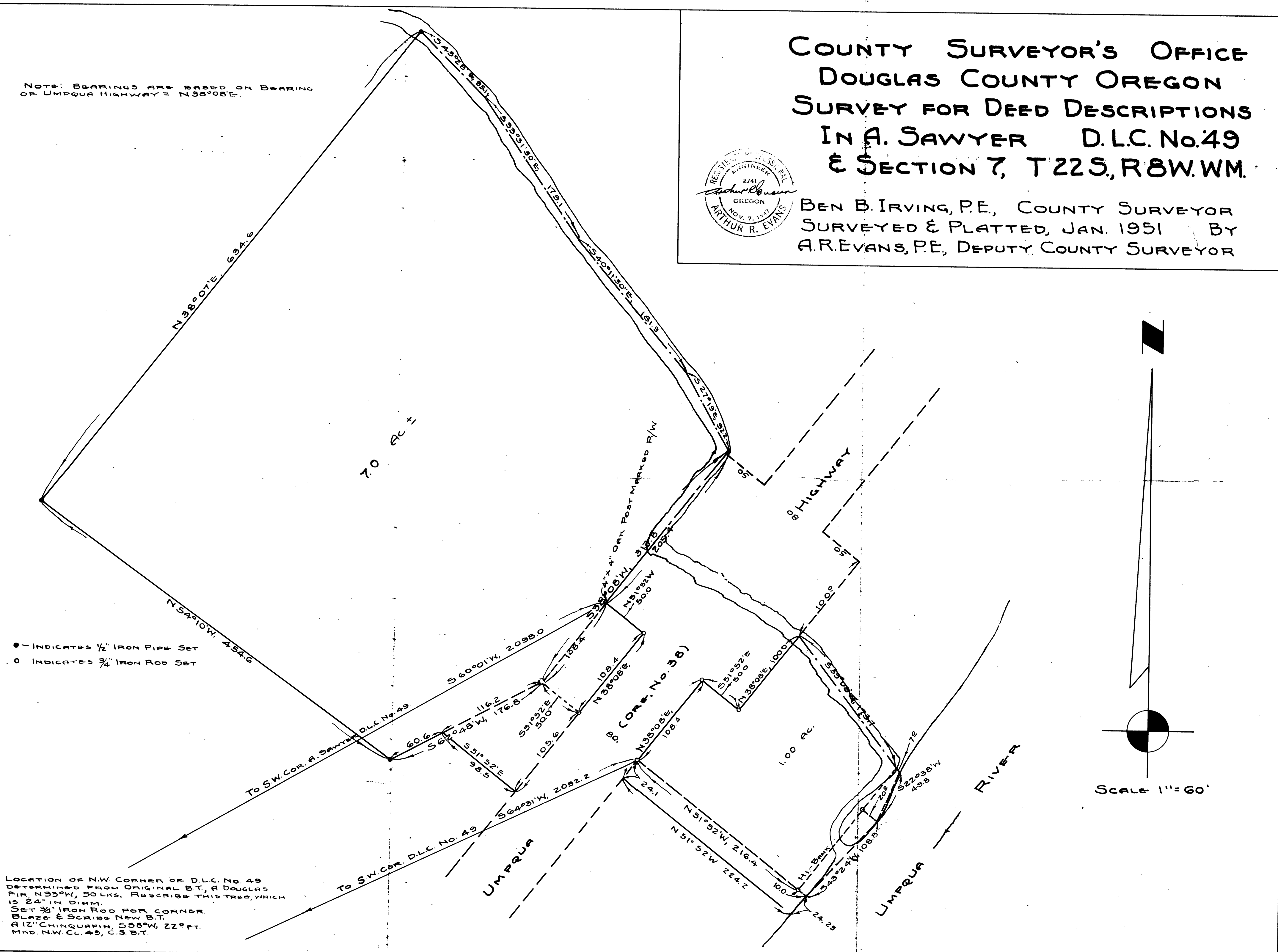
C.S. FILE 44/78  
M10-62

# COUNTY SURVEYOR'S OFFICE DOUGLAS COUNTY OREGON SURVEY FOR DEED DESCRIPTIONS IN A. SAWYER D.L.C. No. 49 & SECTION 7, T22S, R8W, WM.



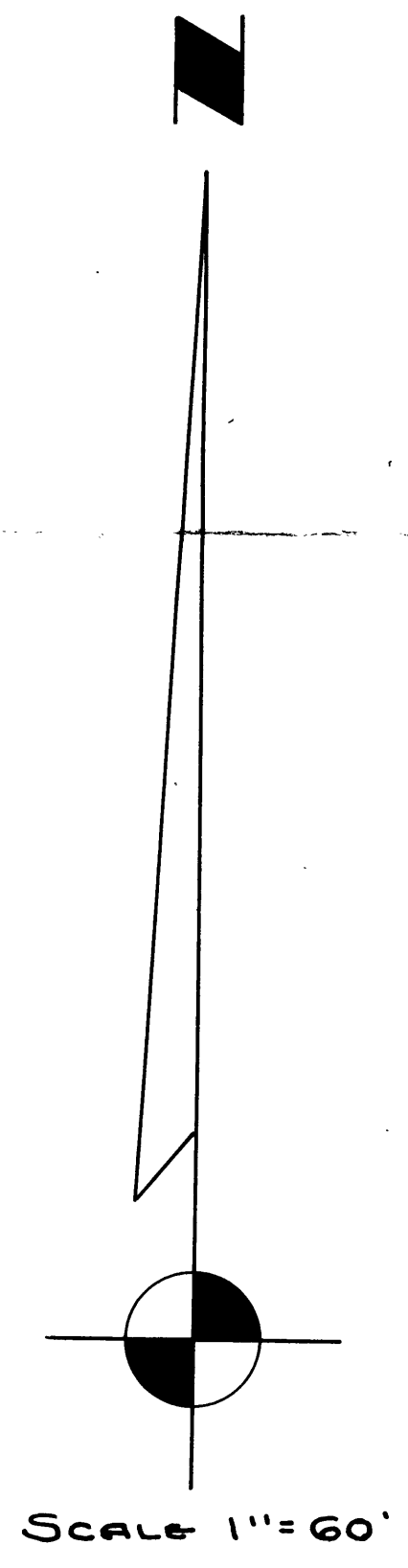
BEN B. IRVING, P.E., COUNTY SURVEYOR  
SURVEYED & PLATTED, JAN. 1951 BY  
A.R. EVANS, P.E., DEPUTY COUNTY SURVEYOR

NOTE: BEARING OF 72° OF BEARING  
OF UMPQUA HIGHWAY = 790°08'E.



● - INDICATES 1/2" IRON PIPE SET  
○ - INDICATES 3/4" IRON ROD SET

LOCATION OF N.W. CORNER OF D.L.C. No. 49  
DETERMINED FROM ORIGINAL B.T. A DOUGLAS  
PINE, N33°W, 50 LKS. RE-SURVEY THIS TREE, WHICH  
IS 24" IN DIAM.  
SET 3/4" IRON ROD FOR CORNER.  
BLAZE & SCRIBE NEW B.T.  
A 12" CHINQUAPIN, S58°W, 22 FT.  
MKD. NW. CL. 49, C.S. B.T.



MADE FROM M10/62

CS 44/78  
M10-62