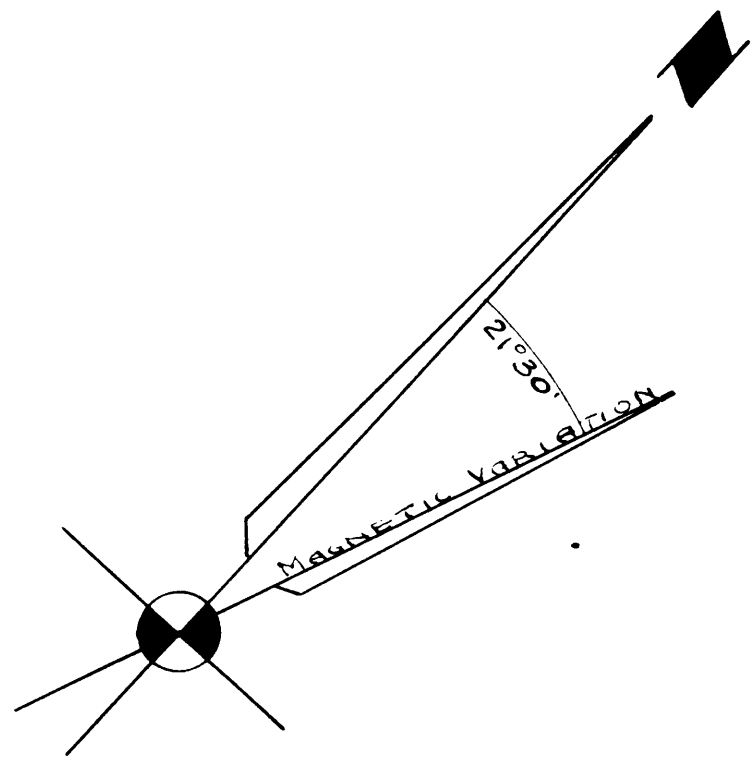
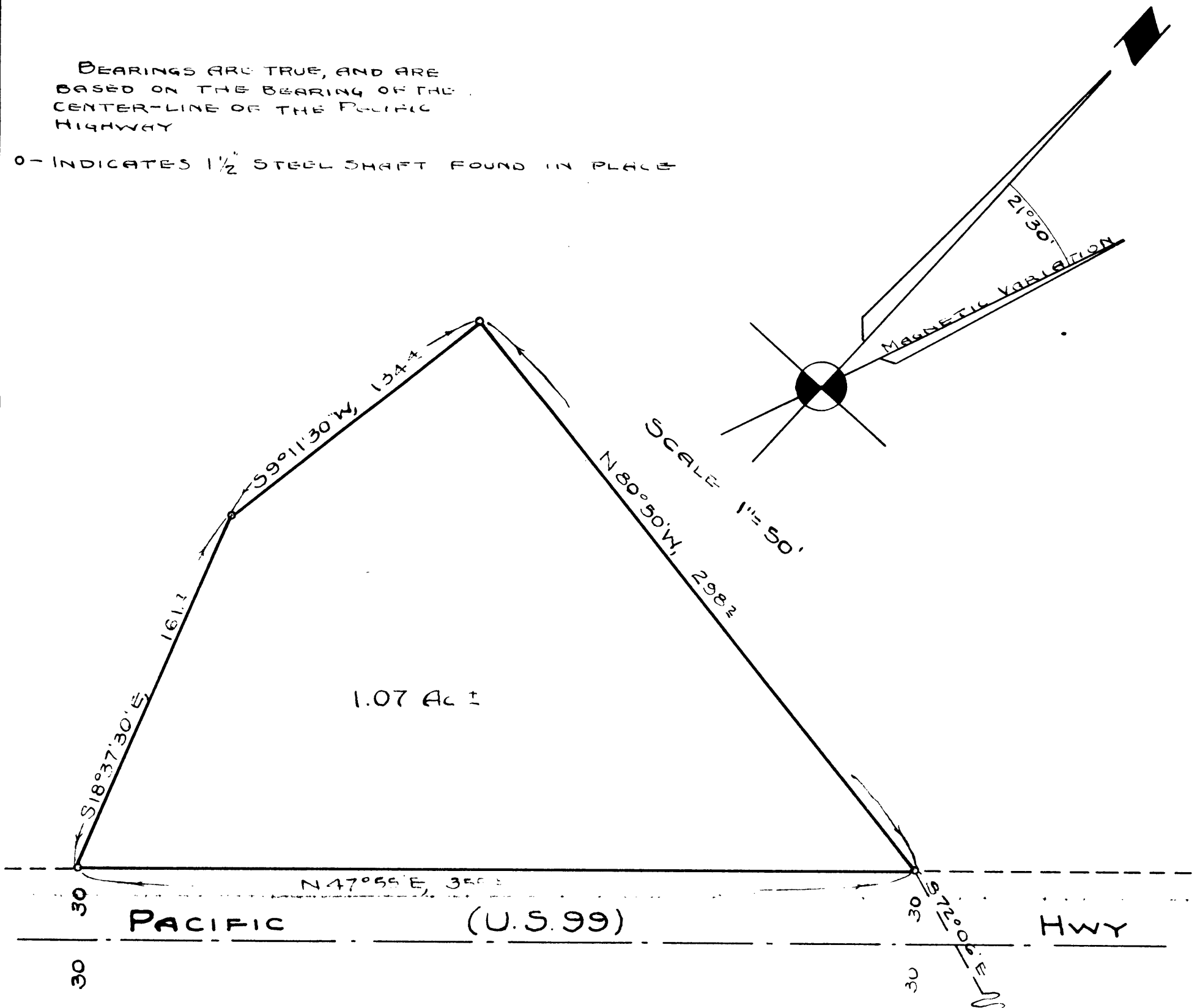


CS FILE 49/63
M 12-54

BEARINGS ARE TRUE, AND ARE
BASED ON THE BEARING OF THE
CENTER-LINE OF THE PACIFIC
HIGHWAY

○ INDICATES 1/2" STEEL SHAFT FOUND IN PLACE



N.E. Richardson

SECOR ROBT. SMITH
DLC NO 47, FD ORIGINAL
STONE FOR CORNER, 10"x10"x15"
MARKED WITH 'X' & '47'
BLAZED & SCRIBED NEW B.T.S
18" PINE, N7°W, 21 1/2 FT
8" FIR, SOUTH, 16 1/2 FT.

COUNTY SURVEYOR'S OFFICE DOUGLAS COUNTY OREGON SURVEY FOR DEED DESCRIPTION SECTION 28, T23S, R5W, WM.

BEN B. IRVING COUNTY SURVEYOR
SURVEYED, SEPT. 25, 1950, BY
N.E. RICHARDSON DEPUTY

CS FILE 49/63
M 12-54