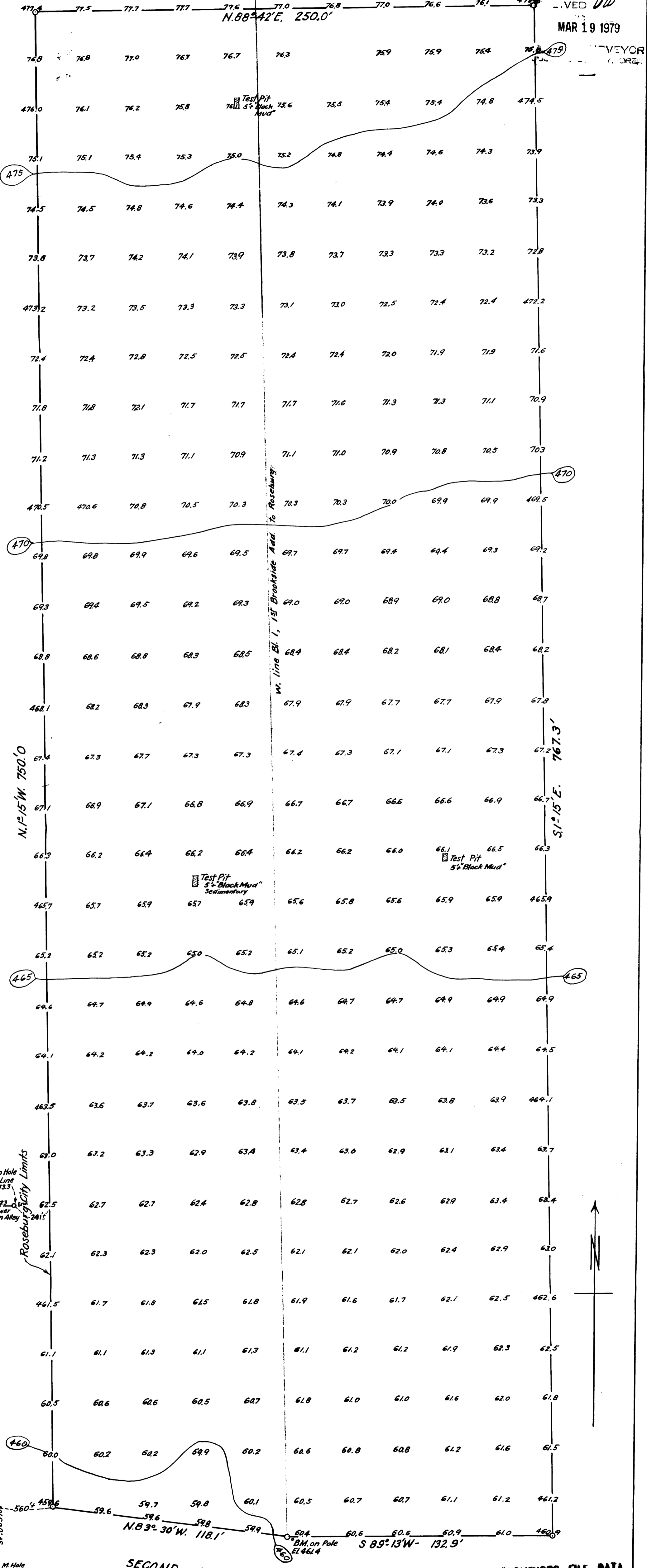


FILED  
LIVED *UV*  
MAR 19 1979

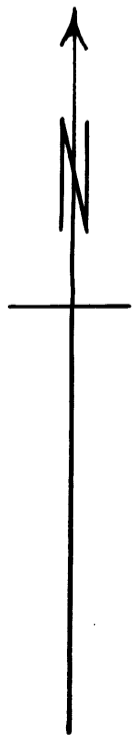
CONVEYOR  
OREG.

$N. 88^{\circ} 42' E, 250.0'$



Lamp Hole  
Flow Line  
El. 453.3  
3" 01123  
6" Sewer  
Lat. in Alley  
Roseburg City Limits

M. Hole  
Flow Line  
El. 452.8  
14" Sewer - Cent. E. 6th St.  
St. 003757



SECOND AVE. S. (if extended east) = COUNTY ROAD  
(OILED SURF)

COUNTY SURVEYORS FILE DATA  
DO NOT REMOVE FROM OFFICE

4" Calif. Oreg. Power Co. Water Line Press. 80 lbs.  
" " " " Power Line  
" " " " Power Pole

FED. PUB. HOUSING AUTHORITY.  
PROPOSED TRAILER CAMP SITE  
OREGON PROJ. 35276 ROSEBURG, ORE.  
SEPT. 1943 A. Boyer City Engr. SCALE, 1" = 30'

T 27-5 SEC. 19 NW 1/4  
7 SEC. 18 SW 1/4