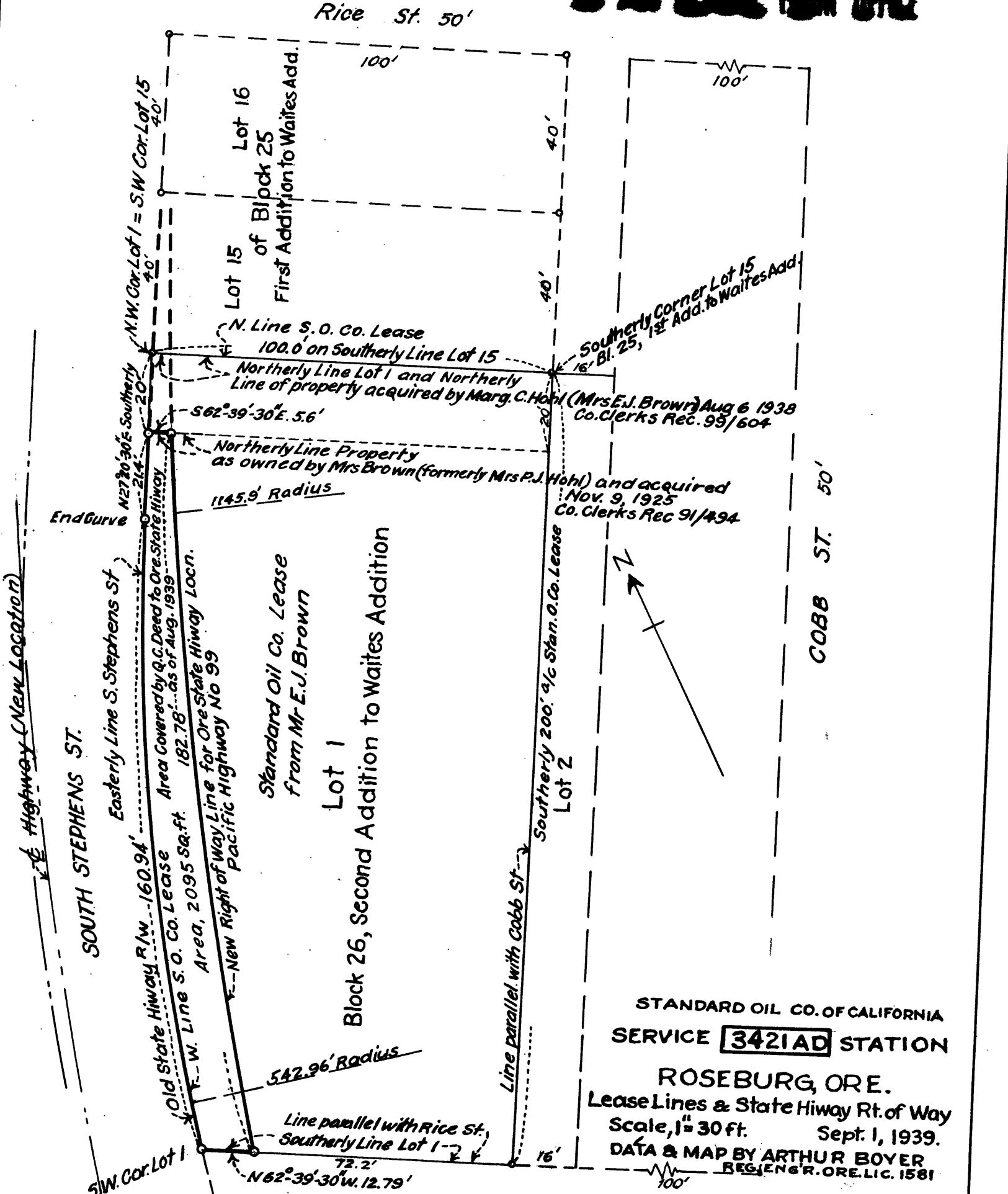


COUNTY SURVEYORS FILE DATA DO NOT REMOVE FROM OFFICE



STANDARD OIL CO. OF CALIFORNIA
 SERVICE **3421AD** STATION
 ROSEBURG, ORE.
 Lease Lines & State Hiway Rt. of Way
 Scale, 1" = 30 ft. Sept. 1, 1939.
 DATA & MAP BY ARTHUR BOYER
 REG' ENGR. ORE. LIC. 1581

T 27-6 SEC 24 C. S. File No. 44/49-5
 SE SE 1/4