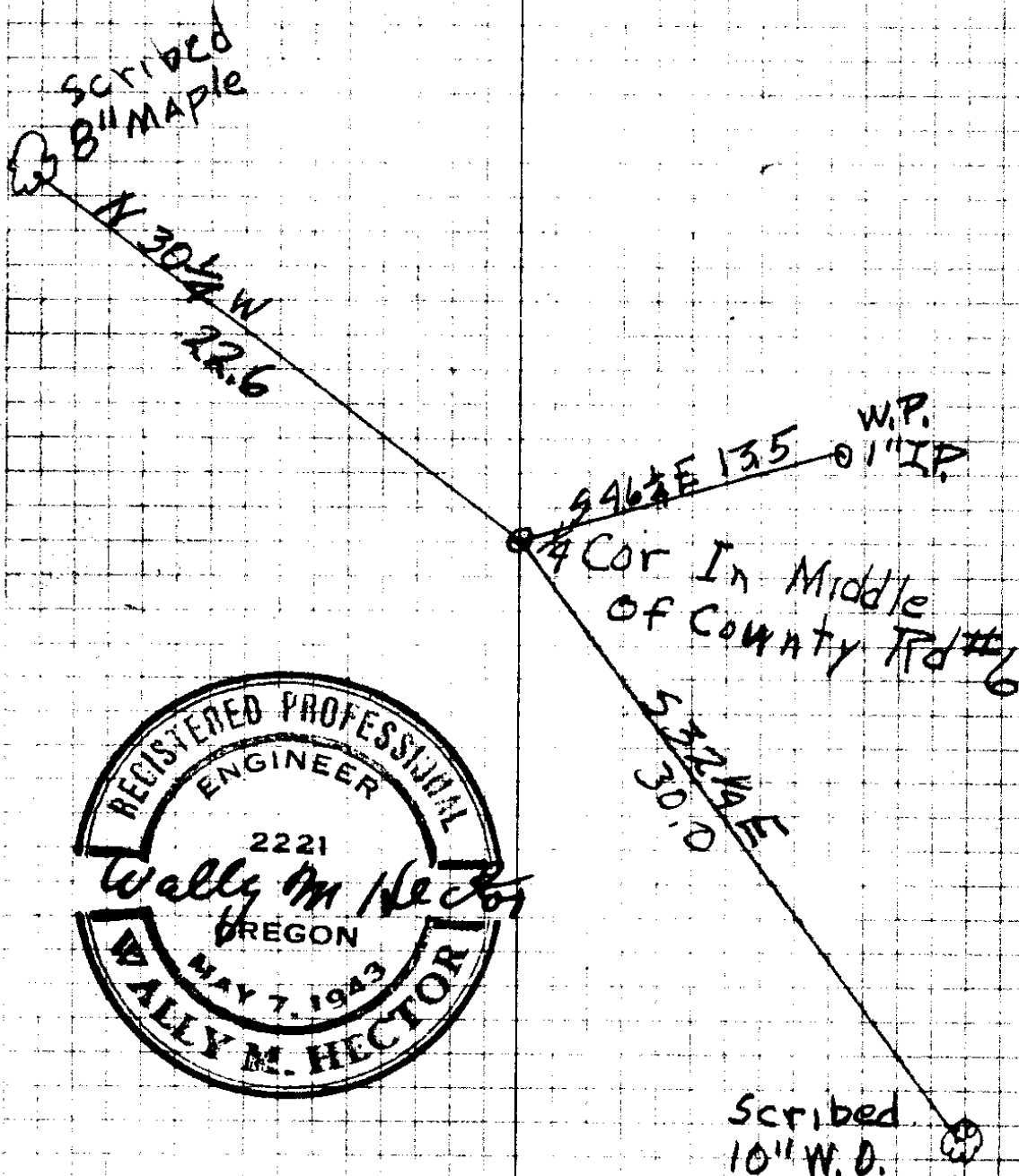


Notes On Resetting Witness
Trees to 1/4 Sec. Cor between

748 TWP 26 S. R. 6 W.

Found Stamps of original B.T.S.



44-47

00/27

I have seen the scribe
markings on this tree before
it was cut down therefore I
can testify that this is the
bearing tree

F. A. Becker

5-22-51

A Crowder Witness
A Baughman Witness