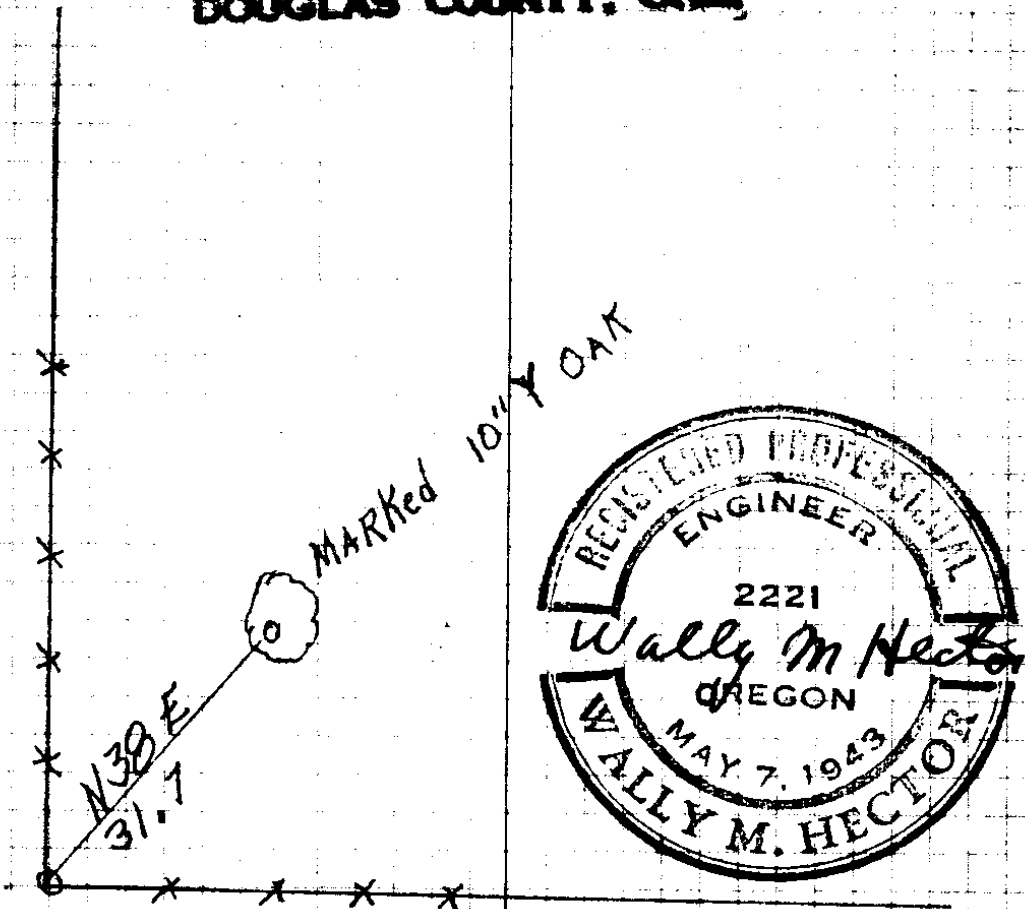


New Bearing Tree  
Scribed for SW cor <sup>Hurst (36)</sup> D.L.C. # 54  
5-18-51 Crowder T255, E7W  
(6)

FILED 5-21-51

MAY 21 1951

COUNTY SURVEYOR  
DOUGLAS COUNTY, ORE.



S.W. COR. D.L.C. # 54  
56

44-47

44/47-4