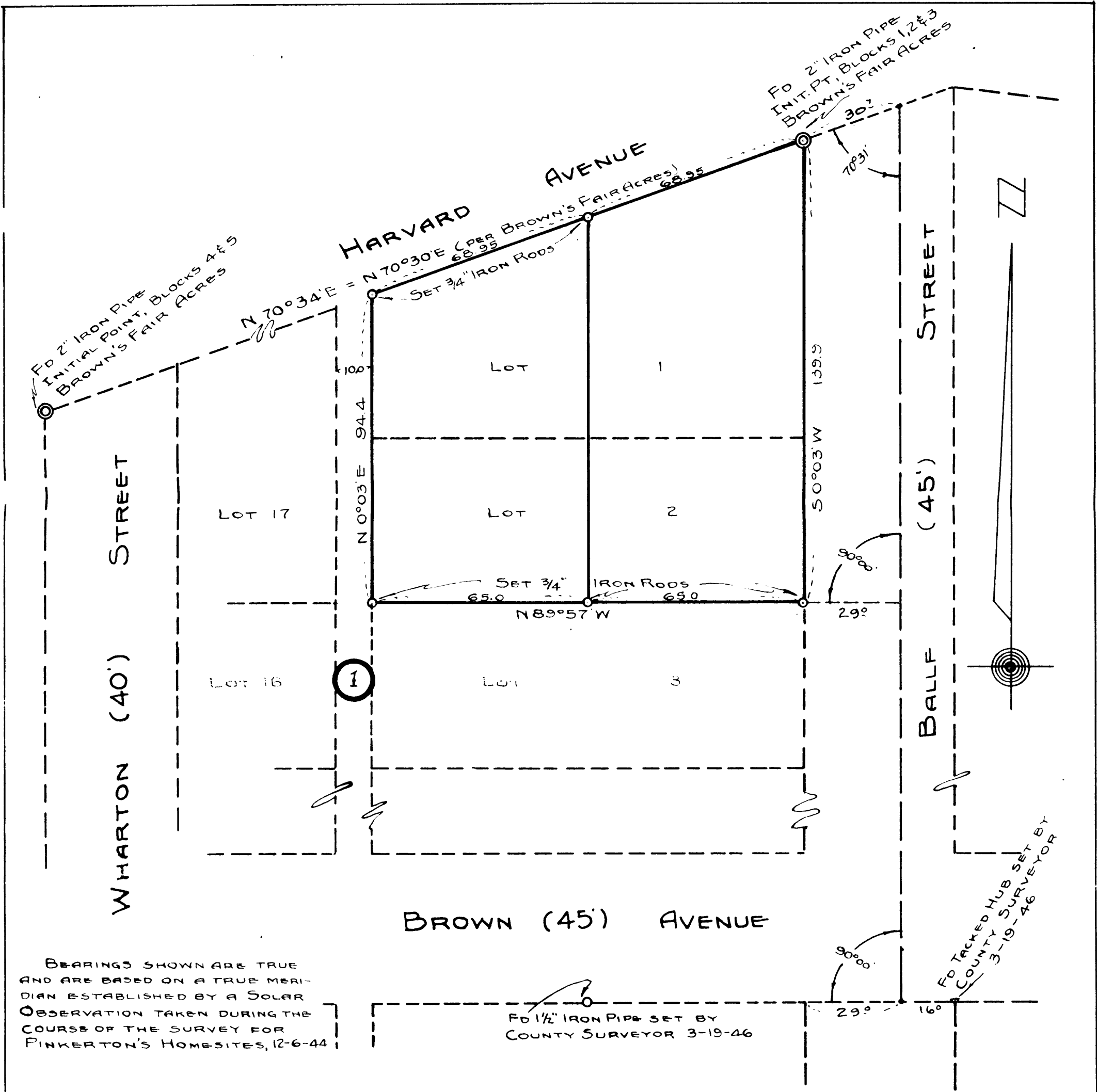


11-28-11
CS 74/8



BEARINGS SHOWN ARE TRUE AND ARE BASED ON A TRUE MERIDIAN ESTABLISHED BY A SOLAR OBSERVATION TAKEN DURING THE COURSE OF THE SURVEY FOR PINKERTON'S HOMESITES, 12-6-44

COUNTY SURVEYOR'S OFFICE
DOUGLAS COUNTY OREGON
SURVEY TO ESTABLISH PROPERTY
LINES & CORNERS, LOTS 1 & 2, BLK. 1
BROWN'S FAIR ACRES
SEC. 24, T27S., R6W., WIL. MER.



BEN B. IRVING COUNTY SURVEYOR
 SURVEYED & PLATTED, MARCH 18, 1950, BY
 A. R. EVANS, REG. ENGR. NO. 2741, DEPUTY
 SCALE 1" = 30'