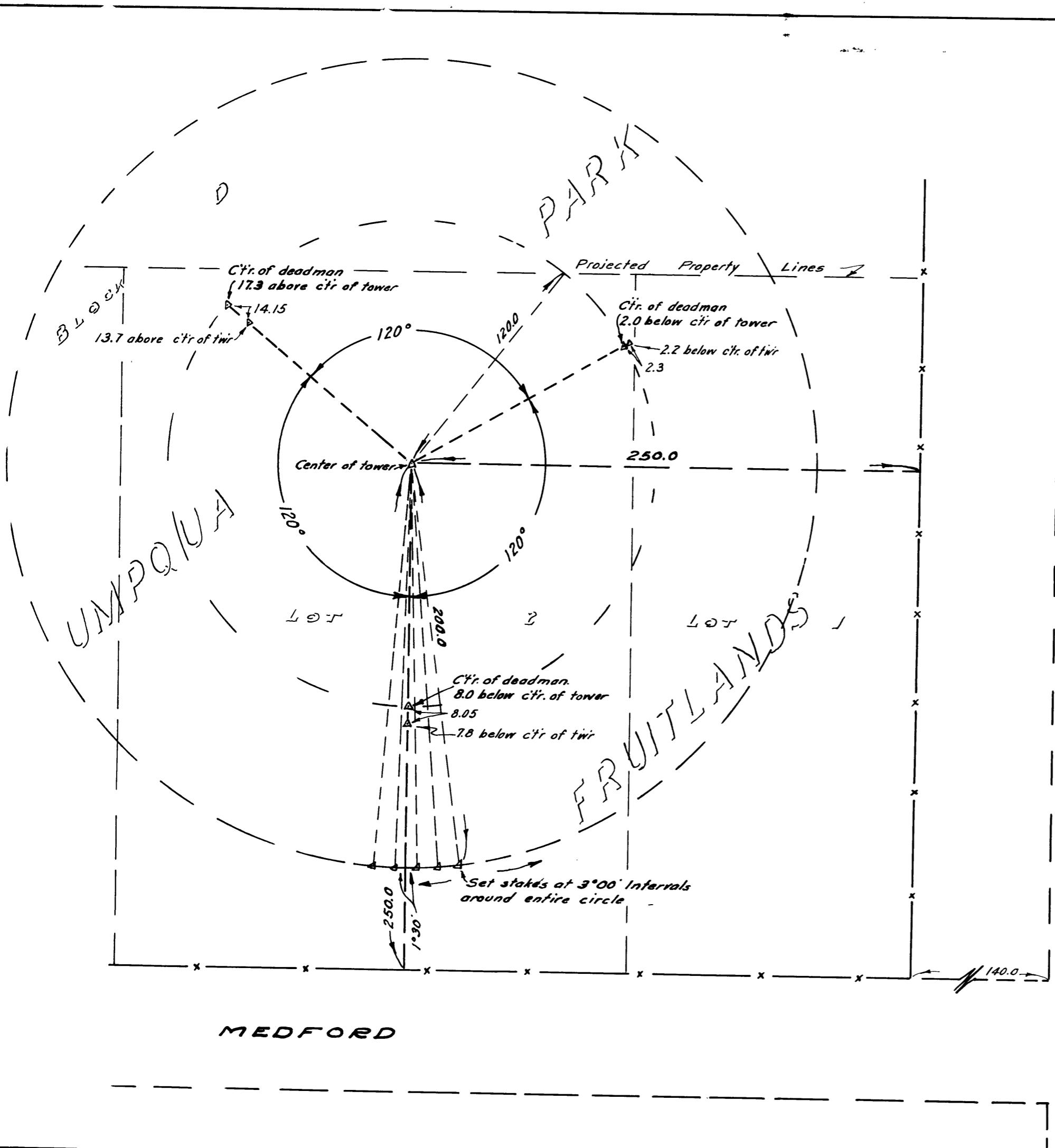


COUNTY SURVEYORS FILE DATA  
DO NOT REMOVE FROM OFFICE



NOTE:-  
No survey of property made. Tower located from existing fences, in accordance with instructions received.

COUNTY SURVEYOR'S OFFICE  
DOUGLAS COUNTY, OREGON.

LOCATION & LAYOUT SURVEY,  
RADIO TOWER

SURVEYED APRIL 24, 1950 BY  
BEN. B. IRVING Co. SURVEYOR  
SCALE 1"=50'

