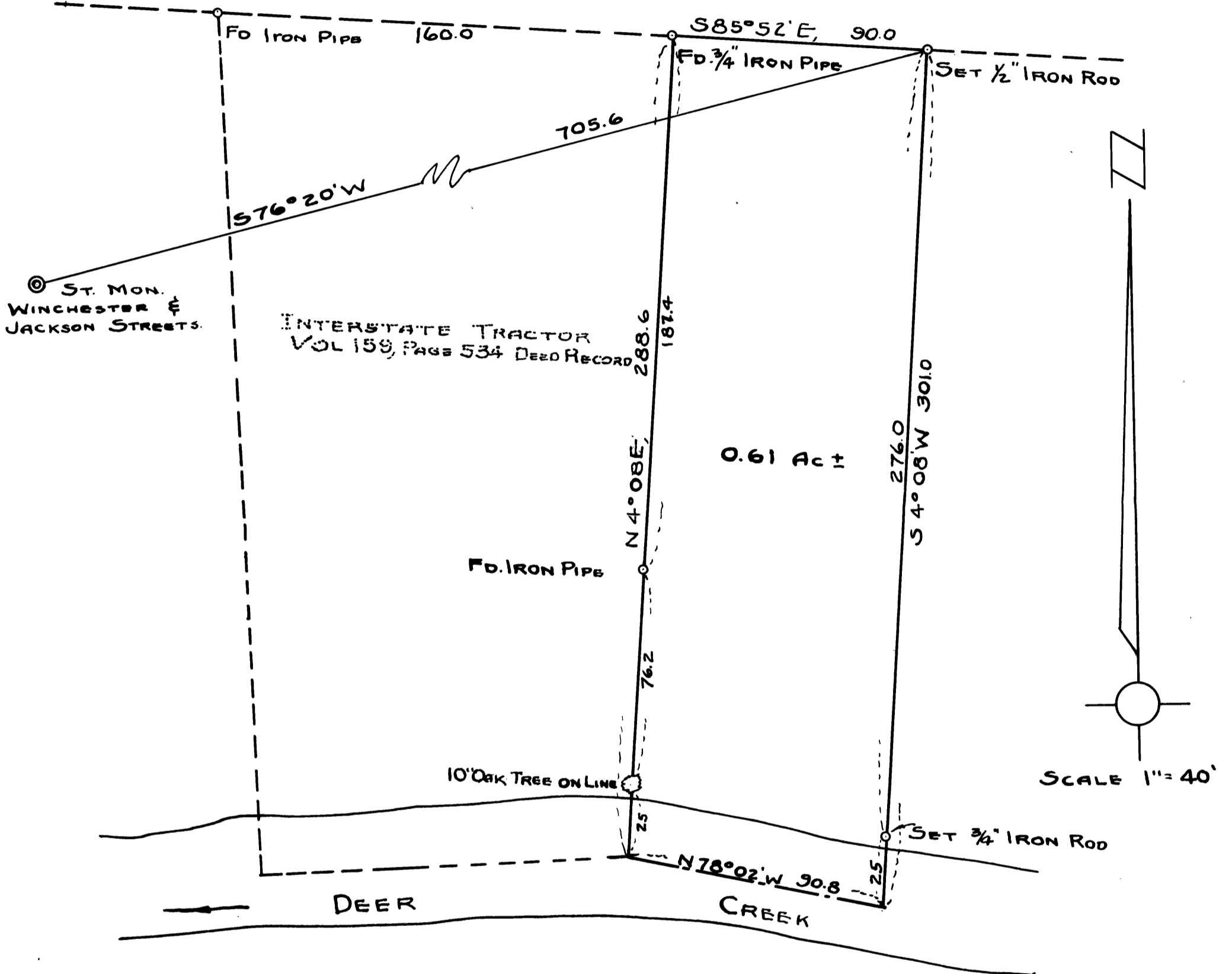


COUNTY SURVEYORS FILE DATA
DO NOT REMOVE FROM OFFICE

EAST 2ND AVENUE, SOUTH (NORTH UMPQUA HIGHWAY)



COUNTY SURVEYOR'S OFFICE
DOUGLAS COUNTY OREGON
SURVEY OF PART OF LOT 1,
BLOCK 1, BUSHEY'S ADDITION
TO ROSEBURG, ORE.



BEN B. IRVING COUNTY SURVEYOR
SURVEYED & PLATTED, DEC. 1949, BY
A.R. EVANS, DEP. COUNTY SURVEYOR