

MYRTLE CHILDS
VOL. 131, PAGE 160
DEED RECORDS DOUGLAS COUNTY

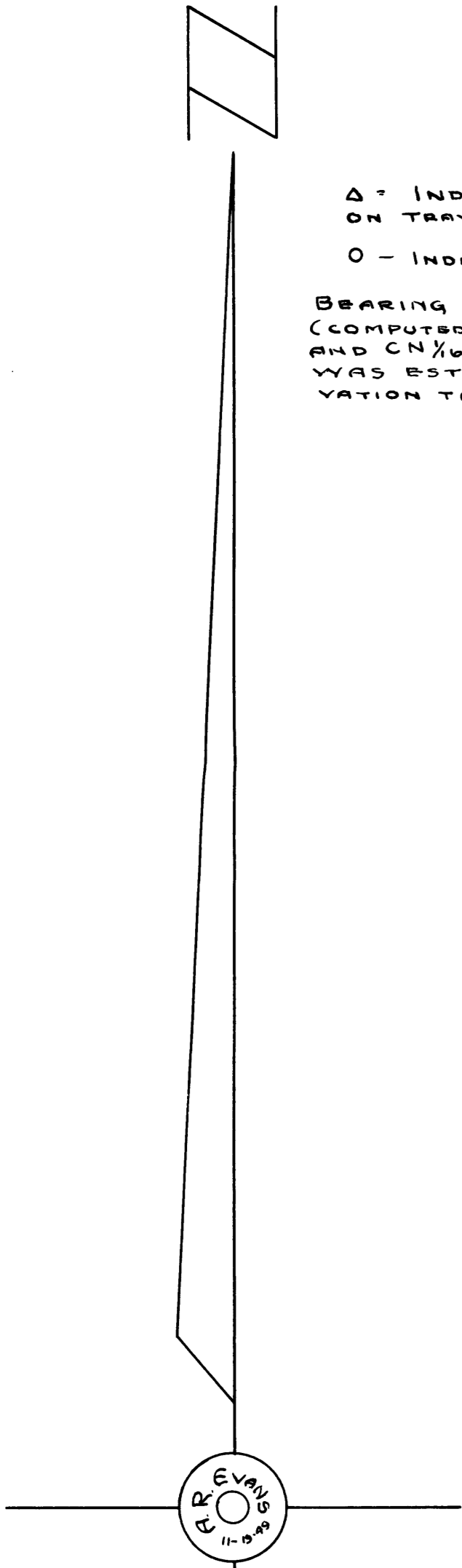
FD. MOUND OF ROCK SET BY CO. SURVEYOR, 1891, FOR S.E. CORNER N 1/2 NW 1/4, SEC. 16. THIS CORNER HAS BEEN ACCEPTED AS TRUE CORNER BY INTERESTED PROPERTY OWNERS FOR 50 YEARS. SET 1 1/4" GALV. IRON PIPE IN MOUND OF ROCK FROM WHICH A 6" CEDAR BEARS N35°W, 215' BLAZED & SCRIBED CN 1/4 S 16 C.S.B.T.

△ - INDICATES TRANSIT STATIONS ON TRAVERSE LINE
○ - INDICATES LINE STAKES ON TRUE LINE
BEARING OF CAVEY EAST BOUNDARY LINE (COMPUTED BETWEEN 1/4 COR SECS. 16 & 21, AND CN 1/4 COR. SEC. 16) IS TRUE, AND WAS ESTABLISHED FROM SOLAR OBSERVATION TAKEN NOV. 3, 1949.

HELEN L. CAVEY
VOL. 115 PAGE 54
DEED RECORDS, DOUGLAS COUNTY

M.H. ANDERSON
VOL. 100, PAGE 55
DEED RECORDS DOUGLAS CO.

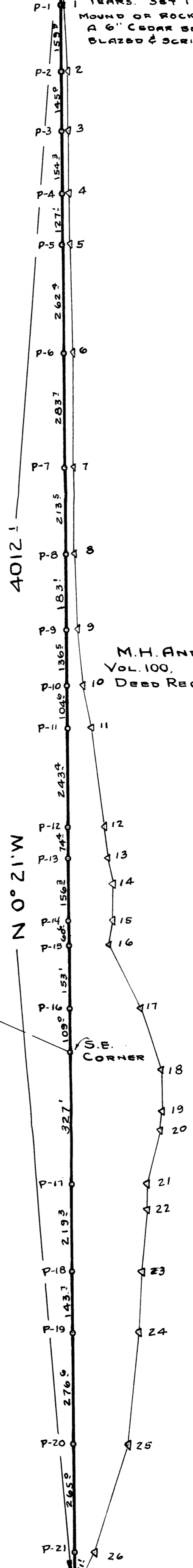
LLOYD H. GRIGGS
VOL. 108, PAGE 181
DEED RECORDS DOUGLAS COUNTY



SCALE 1" = 200'

COUNTY SURVEYOR'S OFFICE
DOUGLAS COUNTY OREGON
SURVEY TO ESTABLISH EAST
BOUNDARY OF HELEN L. CAVEY PROP.
VOL. 115, PAGE 54, DEED RECORDS
LOCATED IN SEC. 16, T21S., R4W., WM.

BEN B. IRVING COUNTY SURVEYOR
SURVEYED NOVEMBER 1-4, 1949, BY
A.R. EVANS, DEPUTY COUNTY SURVEYOR
COUNTY SURVEYORS FILE DATA
DO NOT REMOVE FROM OFFICE



SECTION 16
SECTION 21
FD. O.B.T., 30" FIR (NOW 42") NSW, 37' (ks). FOR 1/4 CORNER SECS. 16 & 21 SET 2" x 72" IRON PIPE FOR COR. FROM WHICH A 20" CEDAR BEARS N65°E, 322' BLAZED & SCRIBED, 1/4 S 16, C.S.B.T. 42" FIR, 553°E, 505' FT. BL. & SCR. 1/4 S 21 C.S.B.T.